




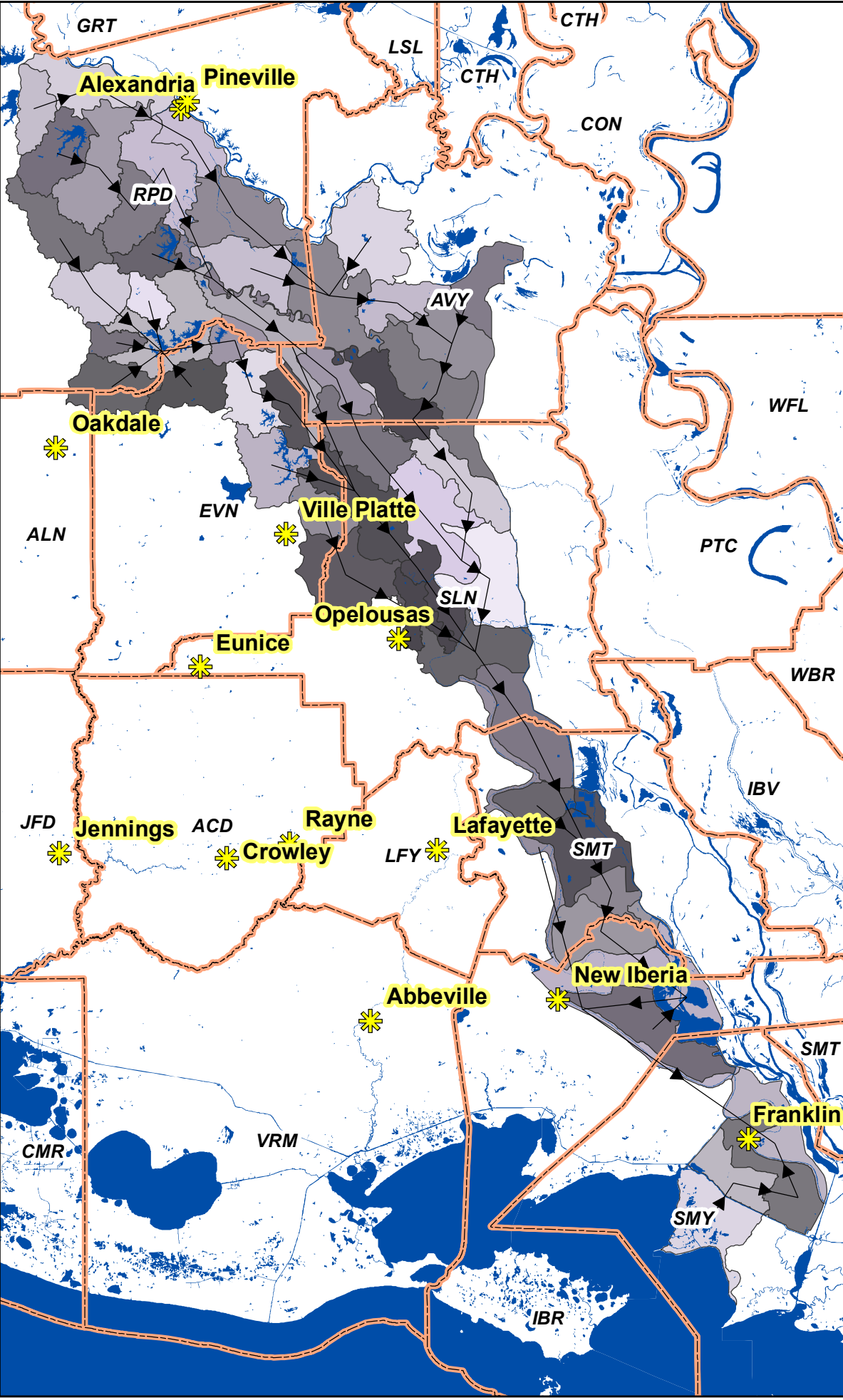
# 08080102 BAYOU TECHE WATERSHED

## Legend

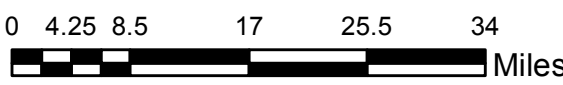
-  Cities with Pop. > 8,000
-  Bayou Teche Flow Direction
-  Parishes Boundary

Although Bayou Teche has its headwaters near Port Barre, where it receives water from Bayou Courtableau, the watershed extends northwest, past Alexandria, Louisiana. The bayou is 125 miles long, but the watershed is approximately 150 miles, from top to bottom. Since the 1930s, levees on the Atchafalaya River have cut-off natural flows. Since the 1980s, pumps near Krotz Springs move water from that basin, into Bayou Courtableau, to support downstream water levels.

- Cities on Bayou Teche, include:
- Port Barre
  - Leonville
  - Arnaudville
  - Cecilia
  - Breaux Bridge
  - Parks
  - St. Martinville
  - Loreauville
  - New Iberia
  - Jeanerette
  - Charenton
  - Baldwin
  - Berwick
  - Franklin
  - Patterson



1 inch equals 13.79 Miles



prepared by  
James E. Mitchell, Ph. D  
LADOTD IT GIS Manager