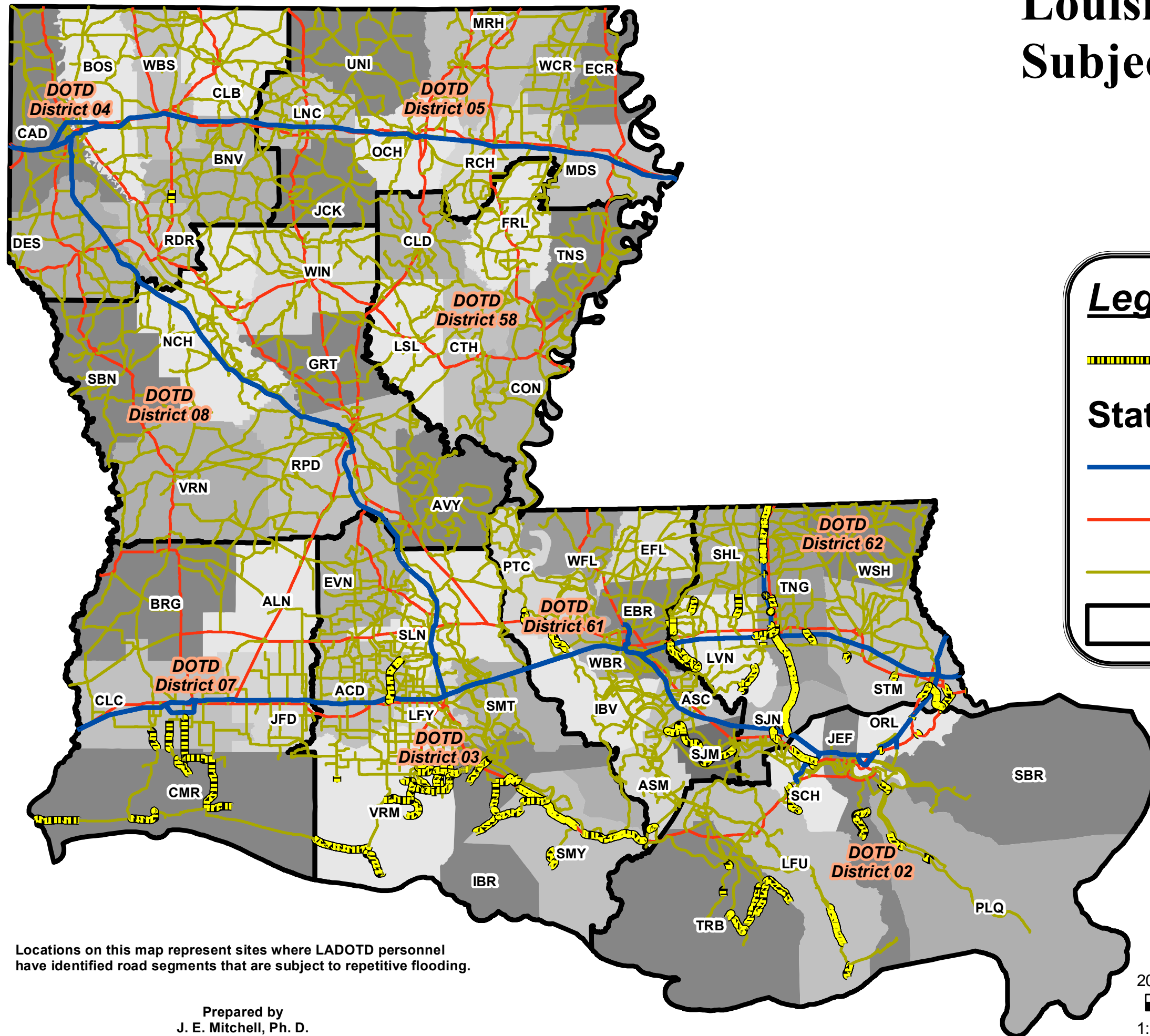







Louisiana State Roads Subject to Repetitive Flooding



Legend

-  Roads Subject to Flooding (107)
- State Highways**
-  Interstate
-  US
-  Louisiana
-  DOTD Districts

Locations on this map represent sites where LADOTD personnel have identified road segments that are subject to repetitive flooding.

Prepared by
J. E. Mitchell, Ph. D.

