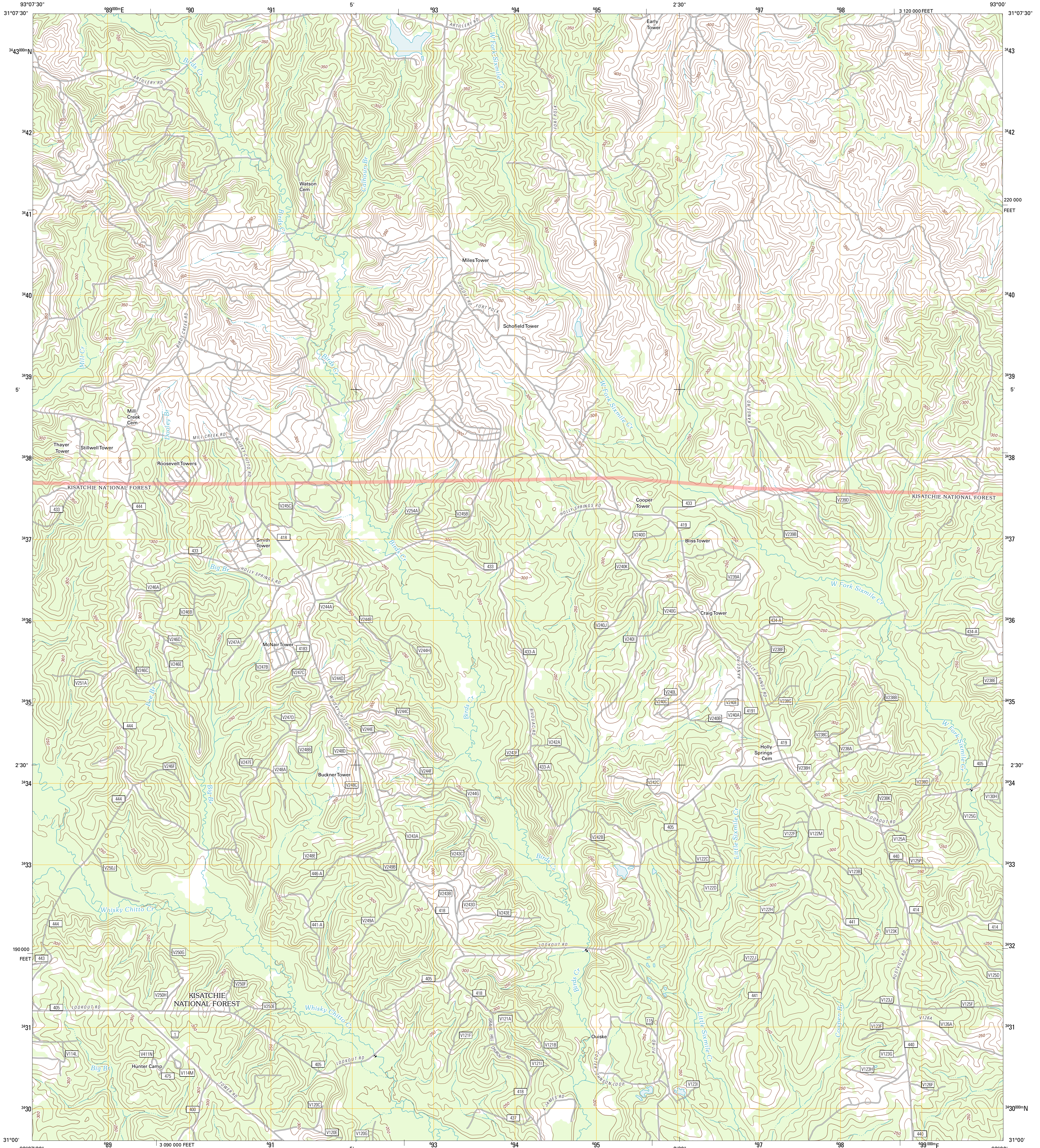




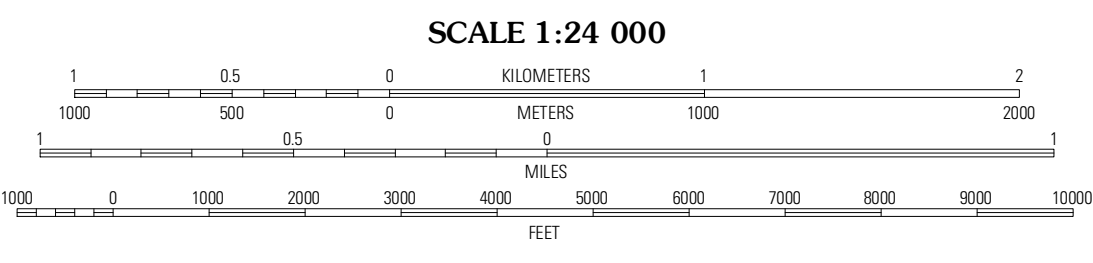
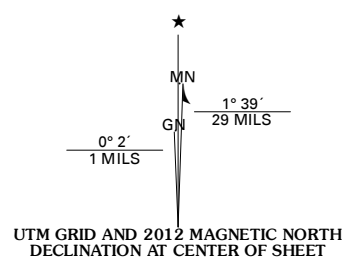
U.S. DEPARTMENT OF THE INTERIOR
U. S. GEOLOGICAL SURVEY



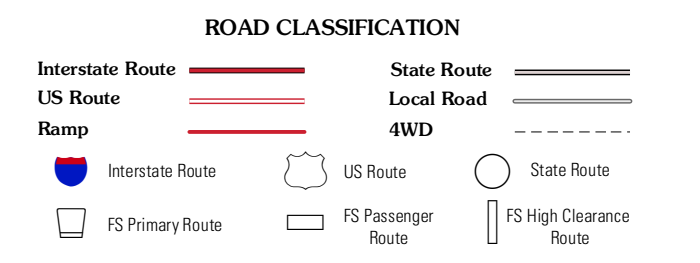
BIRDS CREEK QUADRANGLE
LOUISIANA-VERNON PARISH
7.5-MINUTE SERIES



Produced by the United States Geological Survey
North American Datum of 1983 (NAD83)
World Geodetic System of 1984 (WGS84) Projection and
1 000-meter grid: Universal Transverse Mercator, Zone 15R
10 000-foot ticks: Louisiana Coordinate System of 1983
(north zone)



SCALE 1:24 000
CONTOUR INTERVAL 10 FEET
NORTH AMERICAN VERTICAL DATUM OF 1988



QUADRANGLE LOCATION

Stagle	Simpson South	Lacamp
Fort Polk	Birds Creek	Fullerton Lake
Hurricane Branch	Supreme	Pitkin

Imagery.....NAP, June 2009 - May 2010
Roads.....©2006-2011 TomTom
Roads within US Forest Service Lands.....FSTopo Data
with limited Forest Service updates, 2009
Names.....GNIS, 2011
Hydrography.....National Hydrography Dataset, 2009
Contours.....National Elevation Dataset, 2008
Boundaries.....Census, IBWC, IBC, USGS, 1972 - 2010

U.S. National Grid
100,000-m Square ID
V0
Grid Zone Designation
15R

Check with local Forest Service unit
for current travel conditions and restrictions.

BIRDS CREEK, LA
2012

ADJOINING 7.5 QUADRANGLES