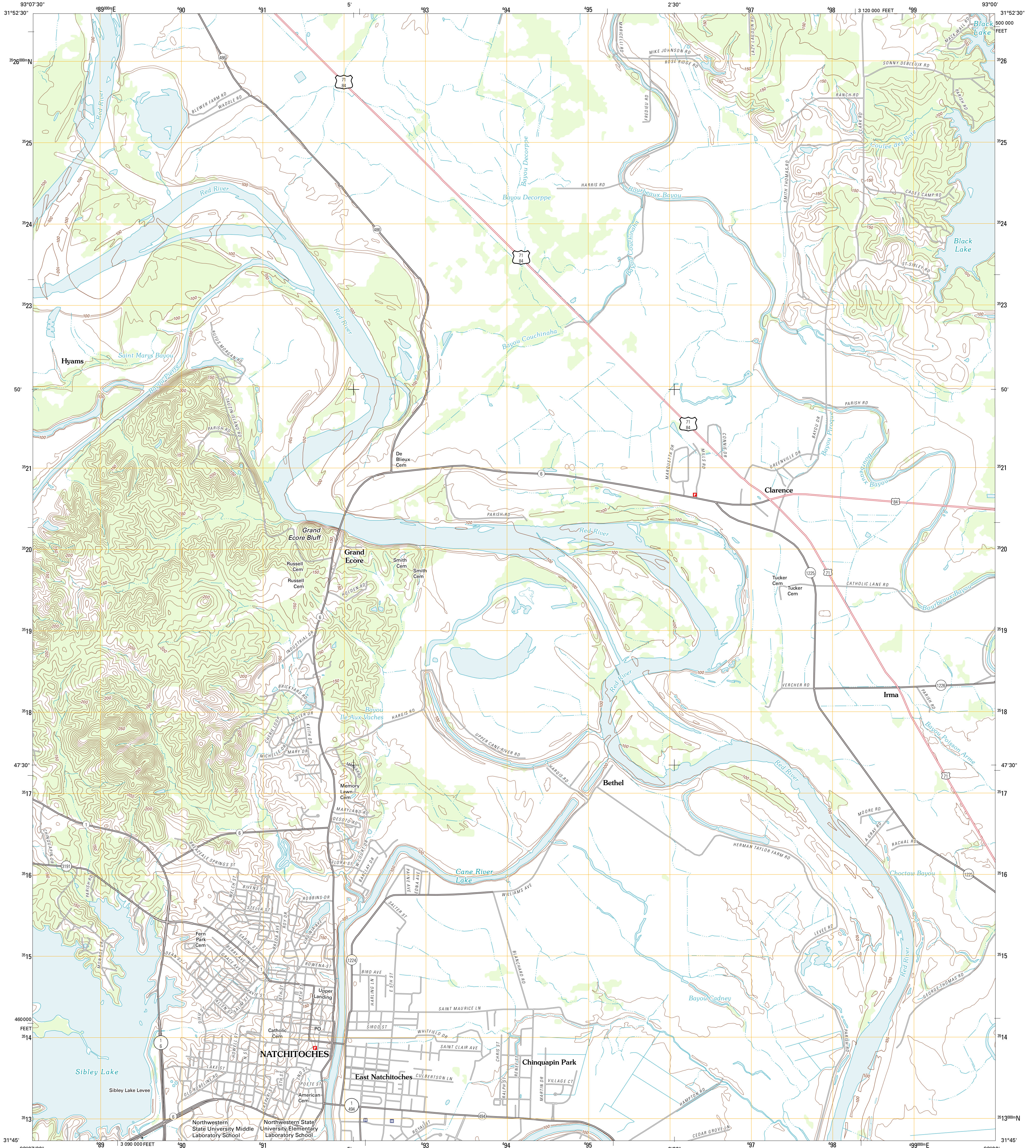




U.S. DEPARTMENT OF THE INTERIOR
U. S. GEOLOGICAL SURVEY

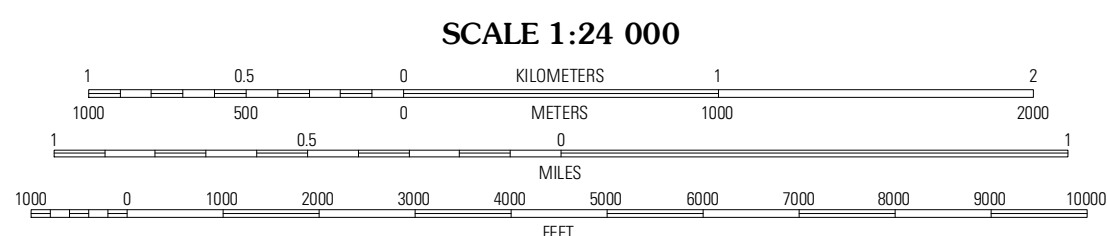
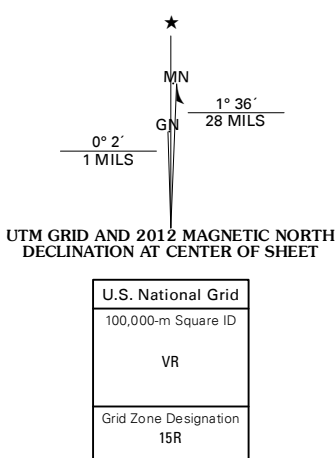


NATCHITOCHESES NORTH QUADRANGLE
LOUISIANA-NATCHITOCHESES PARISH
7.5-MINUTE SERIES



Produced by the United States Geological Survey
North American Datum of 1983 (NAD83)
World Geodetic System of 1984 (WGS84). Projection and
1 000-meter grid: Universal Transverse Mercator, Zone 15R
10 000-foot ticks: Louisiana Coordinate System of 1983
(north zone)

Imagery..... NAD, August 2010
Roads..... ©2006-2011 TomTom
Names..... GNIS, 2011
Hydrography..... National Hydrography Dataset, 2010
Contours..... National Elevation Dataset, 2008
Boundaries..... Census, IBWC, IBC, USGS, 1972 - 2010



CONTOUR INTERVAL 10 FEET
NORTH AMERICAN VERTICAL DATUM OF 1988

This map was produced to conform with the National Geospatial Program US Topo Product Standard, 2011. A metadata file associated with this product is draft version 0.6.1



QUADRANGLE LOCATION

Fairview Alpha	Campiti	Cosp Point
Powhatan	Natchitoches North	Saint Maurice
Provencal	Natchitoches South	Montgomery

ADJOINING 7.5 QUADRANGLES

ROAD CLASSIFICATION

Interstate Route (thick red line)
US Route (red line)
Ramp (red line with blue triangle)

State Route (thin red line)
Local Road (black line)
4WD (dashed black line)

NATCHITOCHESES NORTH, LA
2012