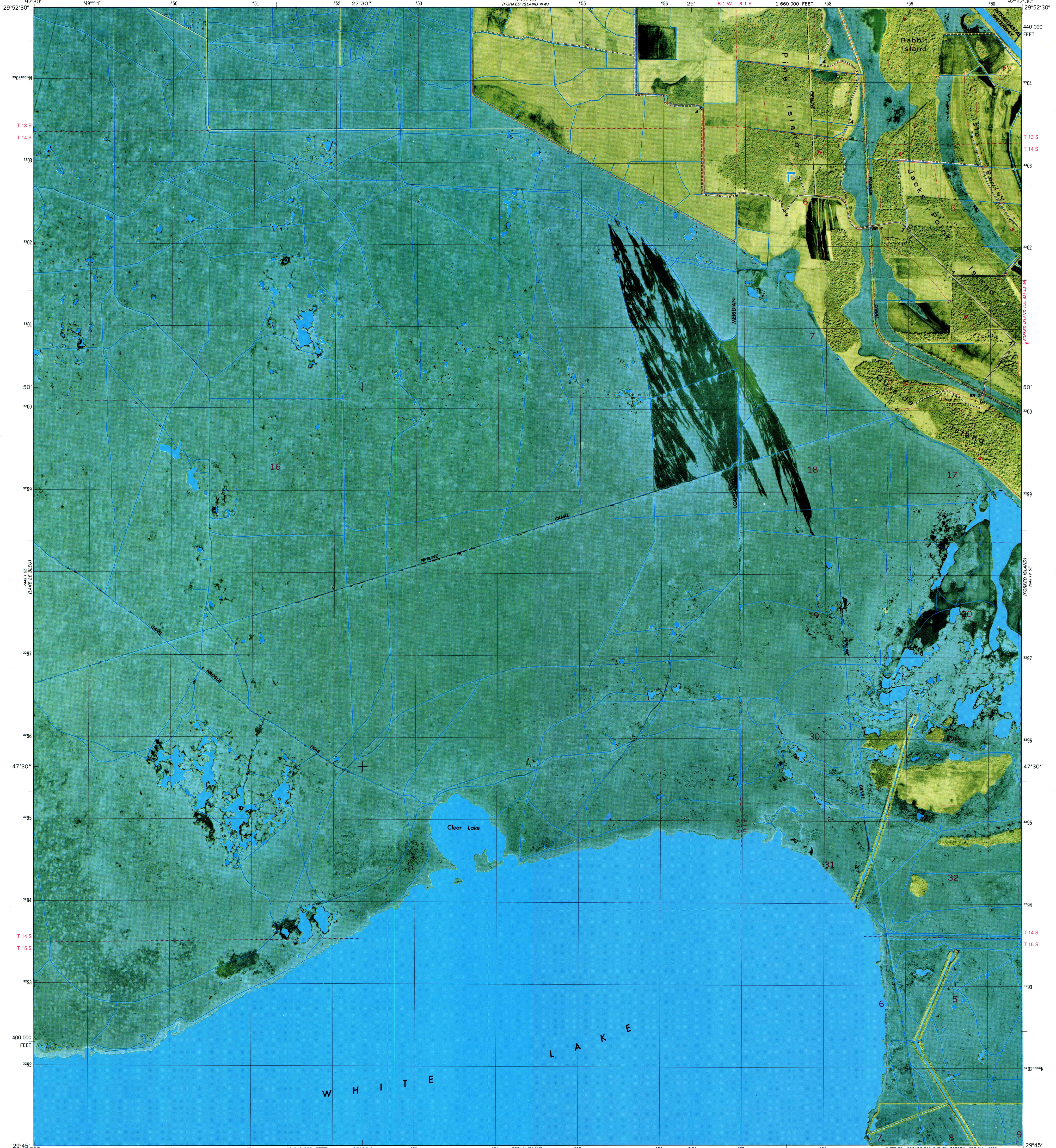


24 1/2 IN. (61.3 CM)

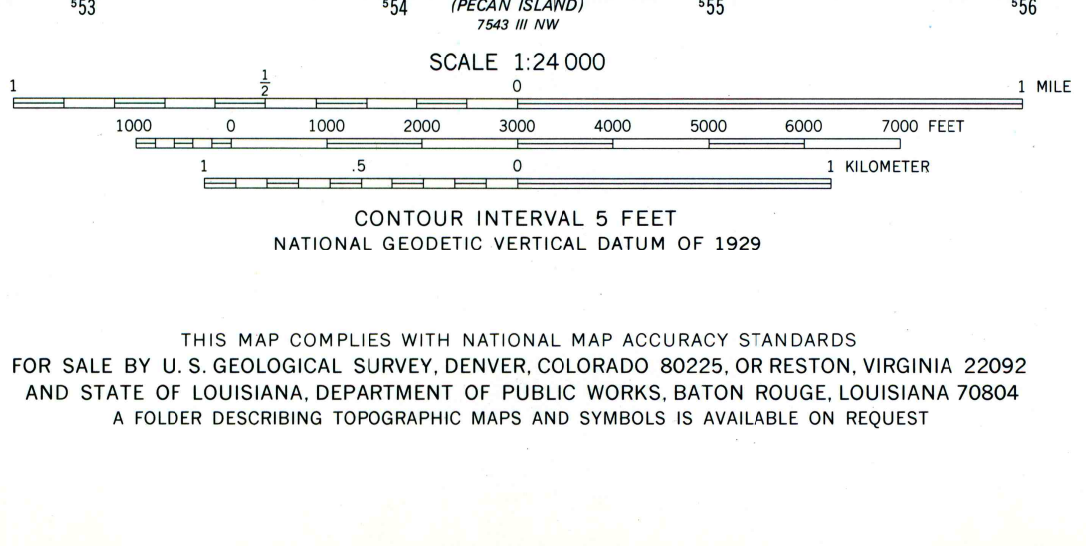
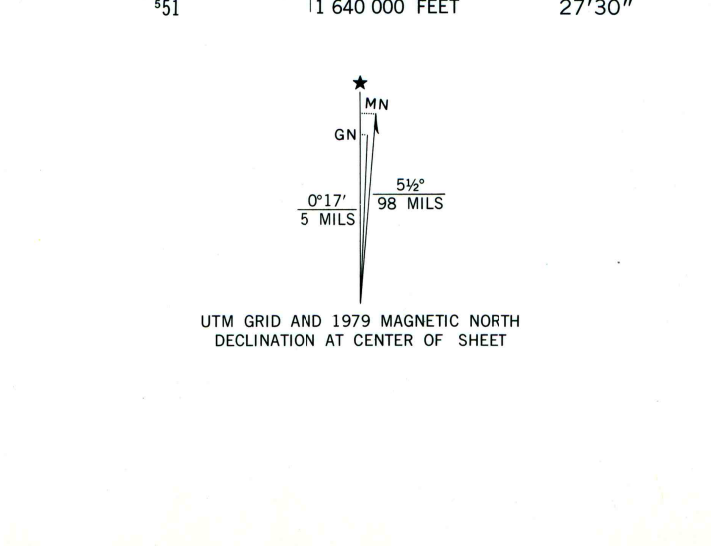
UNITED STATES
DEPARTMENT OF THE INTERIOR
GEOLOGICAL SURVEY

JACKS POINT ISLAND QUADRANGLE
LOUISIANA—VERMILION PARISH
7.5 MINUTE SERIES ORTHOPHOTOMAP (TOPOGRAPHIC)
SW/4 FORKED ISLAND 15' QUADRANGLE

24 1/2 IN. (61.3 CM)



Mapped, edited, and published by the Geological Survey
Control by USGS and NOS/NOAA
Orthophotomap prepared from high-altitude aerial photograph taken November 13, 1974. Topography by planimetric surveys 1977
Supersedes Schooner Bayou SW planimetric map dated 1932
Map edited 1979
Projection and 10,000-foot grid ticks: Louisiana coordinate system, south zone (Lambert conformal conic)
1000-meter Universal Transverse Mercator grid, zone 15
1927 North American datum
To place on the predicted North American Datum 1983
move the projection lines 19 meters south and
14 meters east as shown by dashed corner ticks
All or part of this quadrangle lies within a subsidence area
Where omitted, land lines have not been established or
are not shown because of insufficient data
Dotted land lines established by private survey



ROAD CLASSIFICATION

Primary highway, hard surface	Light-duty road, hard or improved surface
Secondary highway, hard surface	Unimproved road
Interstate Route	U. S. Route
	State Route

LOUISIANA
QUADRANGLE LOCATION

JACKS POINT ISLAND, LA.
SW/4 FORKED ISLAND 15' QUADRANGLE
N2945-W9222.5/7.5
1979
DMA 7543 IV SW-SERIES Y8850