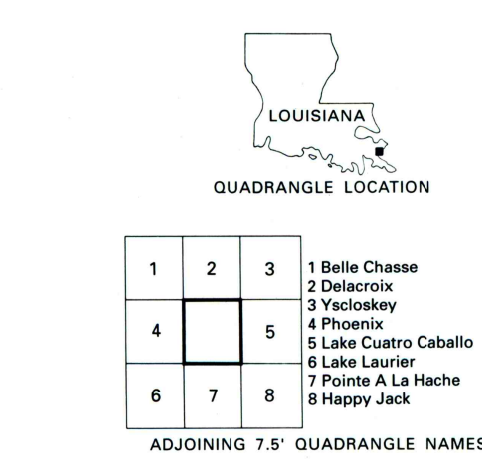
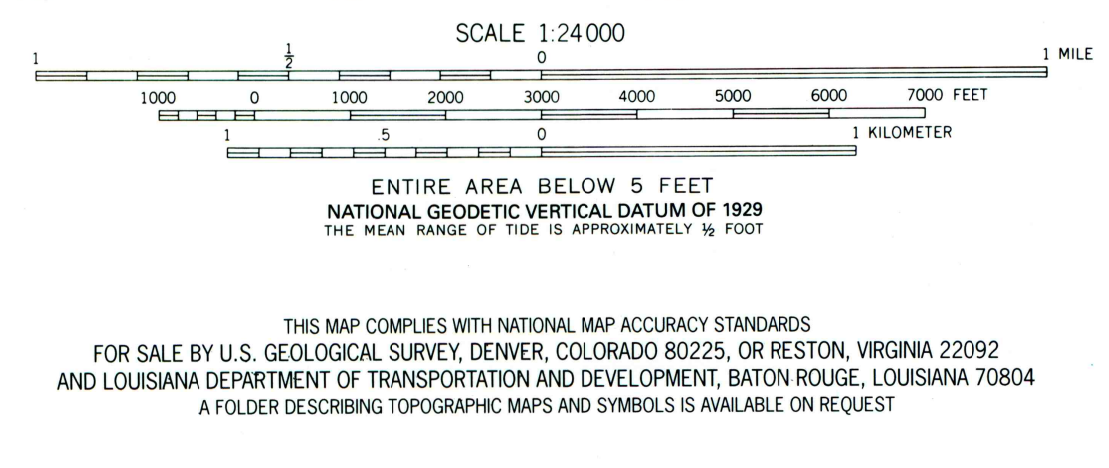
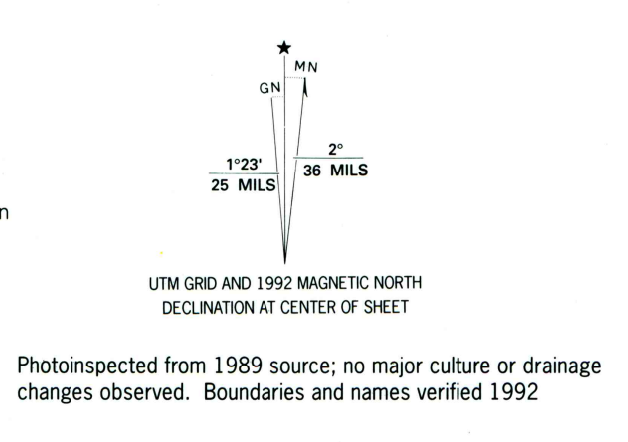


Produced by the United States Geological Survey
Control by USGS and NOS/NOAA
Orthophotomap prepared from high-altitude aerial photographs taken Oct 24, 1971. Topography by planetable surveys 1973
Projection and 10,000-foot grid ticks: Louisiana coordinate system, south zone (Lambert conformal conic)
1000-meter Universal Transverse Mercator grid ticks, zone 16, shown in blue. 1927 North American datum
The difference between 1927 North American Datum and North American Datum of 1983 (NAD 83) for 7.5-minute intersections is given in USGS Bulletin 1875. The NAD 83 is shown by dashed corner ticks
All or part of this quadrangle lies within a subsidence area
Where omitted, land lines have not been established or are not shown because of insufficient data



ROAD CLASSIFICATION

Primary highway, hard surface ——— Light-duty road, hard or improved surface ———
Secondary highway, hard surface ——— Unimproved road ———
Interstate Route (I) U. S. Route (R) State Route (S)

LAKE BATOLA, LA.
NE/4 POINTE A LA HACHE 15' QUADRANGLE
29089-F7-0M-024

1973
MINOR REVISION 1992
DMA 8043 III NE-SERIES V8850