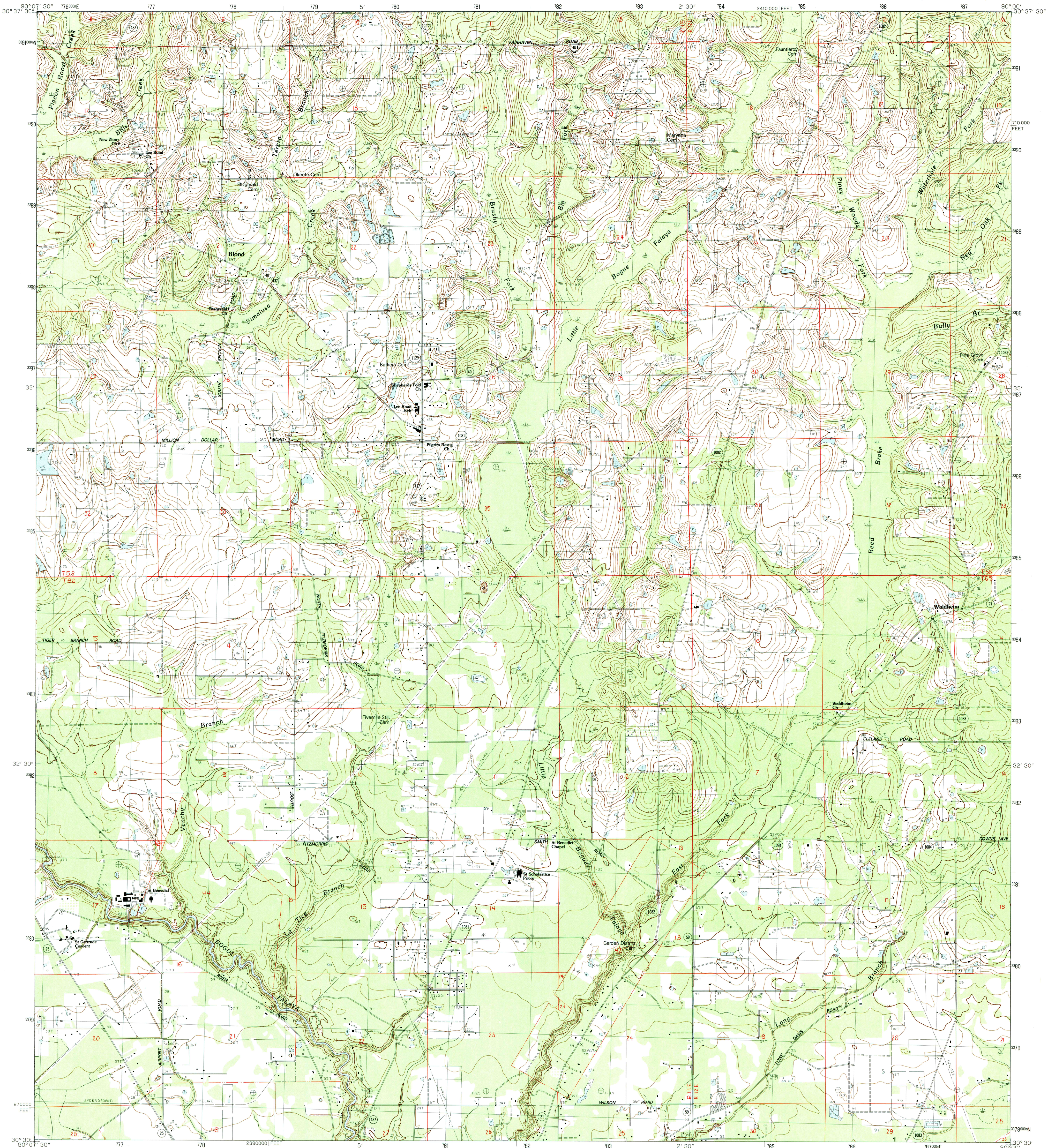


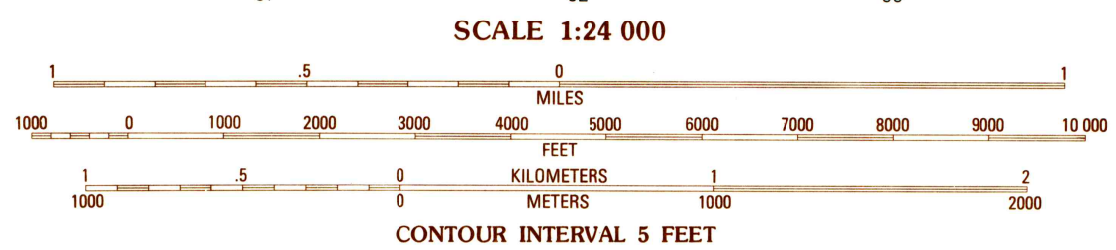
UNITED STATES
DEPARTMENT OF THE INTERIOR
GEOLOGICAL SURVEY

WALDHEIM QUADRANGLE
LOUISIANA—ST. TAMMANY PARISH
7.5 MINUTE SERIES (TOPOGRAPHIC)



PRODUCED BY THE UNITED STATES GEOLOGICAL SURVEY CONTROL BY USGS AND NOS/NOAA COMPILED FROM AERIAL PHOTOGRAPHS TAKEN 1978 FIELD CHECKED 1980 MAP EDITED 1983 PROJECTION LAMBERT CONFORMAL CONIC GRID: 1000-METER UNIVERSAL TRANSVERSE MERCATOR ZONE 15 10,000-FOOT STATE GRID TICKS LOUISIANA, SOUTH ZONE UTM GRID DECLINATION 1°30' EAST 1983 MAGNETIC NORTH DECLINATION 2°09' EAST VERTICAL DATUM NATIONAL GEODETIC VERTICAL DATUM OF 1929 HORIZONTAL DATUM 1927 NORTH AMERICAN DATUM To place on the predicted North American Datum of 1983, move the projection lines as shown by dashed corner ticks (17 meters south and 8 meters east). There may be private inholdings within the boundaries of any Federal and State reservations shown on this map.

PROVISIONAL MAP
Produced from original manuscript drawings. Information shown as of date of field check.



To convert feet to meters multiply by .3048
To convert meters to feet multiply by 3.2808

THIS MAP COMPLIES WITH NATIONAL MAP ACCURACY STANDARDS FOR SALE BY U. S. GEOLOGICAL SURVEY, DENVER, COLORADO 80225, OR RESTON, VIRGINIA 22092 AND THE STATE OF LOUISIANA, DEPARTMENT OF PUBLIC WORKS, BATON ROUGE, LOUISIANA 70804

QUADRANGLE LOCATION

1	2	3	1 Folsom
			2 Enon
			3 Sun
4		5	4 Martinville
			5 Bush
			6 Madisonville
			7 Covington
6	7	8	8 St. Tammany

ADJOINING 7.5 QUADRANGLE NAMES

ROAD LEGEND

Improved Road
Unimproved Road
Trail

Interstate Route U. S. Route State Route

WALDHEIM, LOUISIANA
SECTION 15 QUADRANGLE
PROVISIONAL EDITION 1983

30090-EI-TF-024