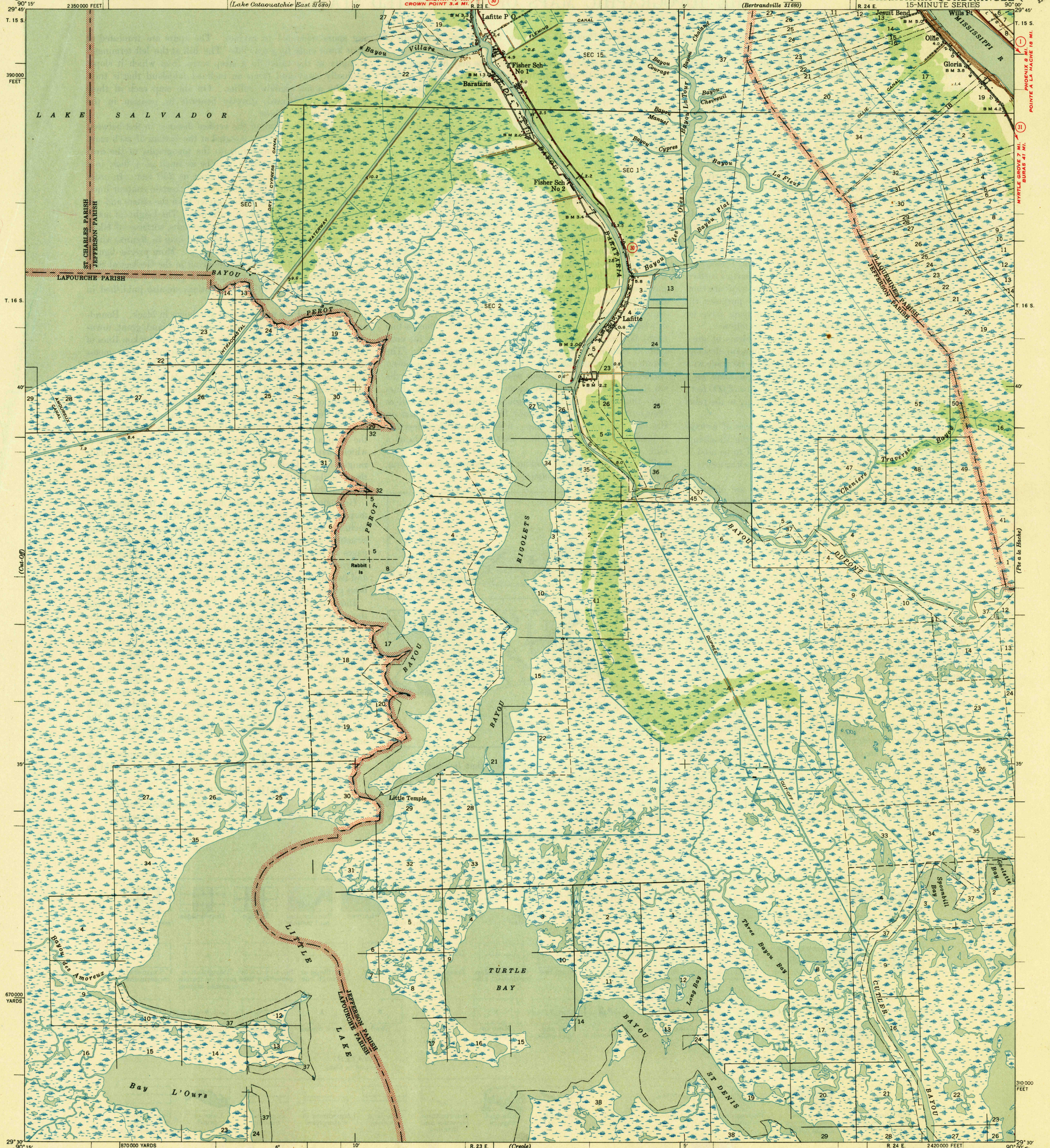


U.S.G.S.
FILE COPY
Illustration and Printing.

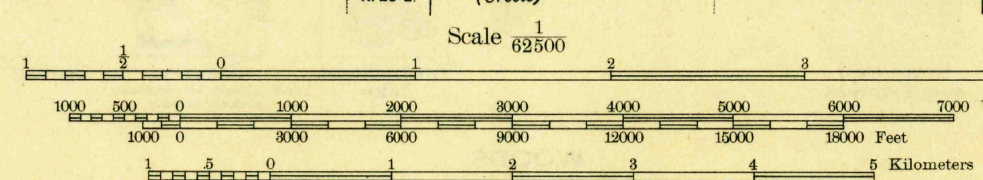
UNITED STATES
DEPARTMENT OF THE INTERIOR
GEOLOGICAL SURVEY

NEW ORLEANS (CUSTOM HOUSE) 30 MI.
BERTRANDVILLE 1.9 MI.
LOUISIANA
BARATARIA QUADRANGLE
15-MINUTE SERIES



Topography by L. E. Marsden
Surveyed in 1939
Base compiled in cooperation with the State of Louisiana

TRUE NORTH
MAGNETIC NORTH
APPROXIMATE MEAN
DECLINATION, 1939



ROAD CLASSIFICATION
1944
Dependable hard-surface heavy-duty road
Secondary hard-surface all-weather road
Loose-surface graded
Unsurfaced, graded
Dry weather roads
Dirt road
U.S. Route
State Route
More than two lanes indicated along road with tick at point of change

Land lines added from General Land Office records adjusted to natural features and control

BARATARIA, LA.
Edition of 1944.
N 2930 - W 9000 / 15

USGS
Historical File
FILE COPY