

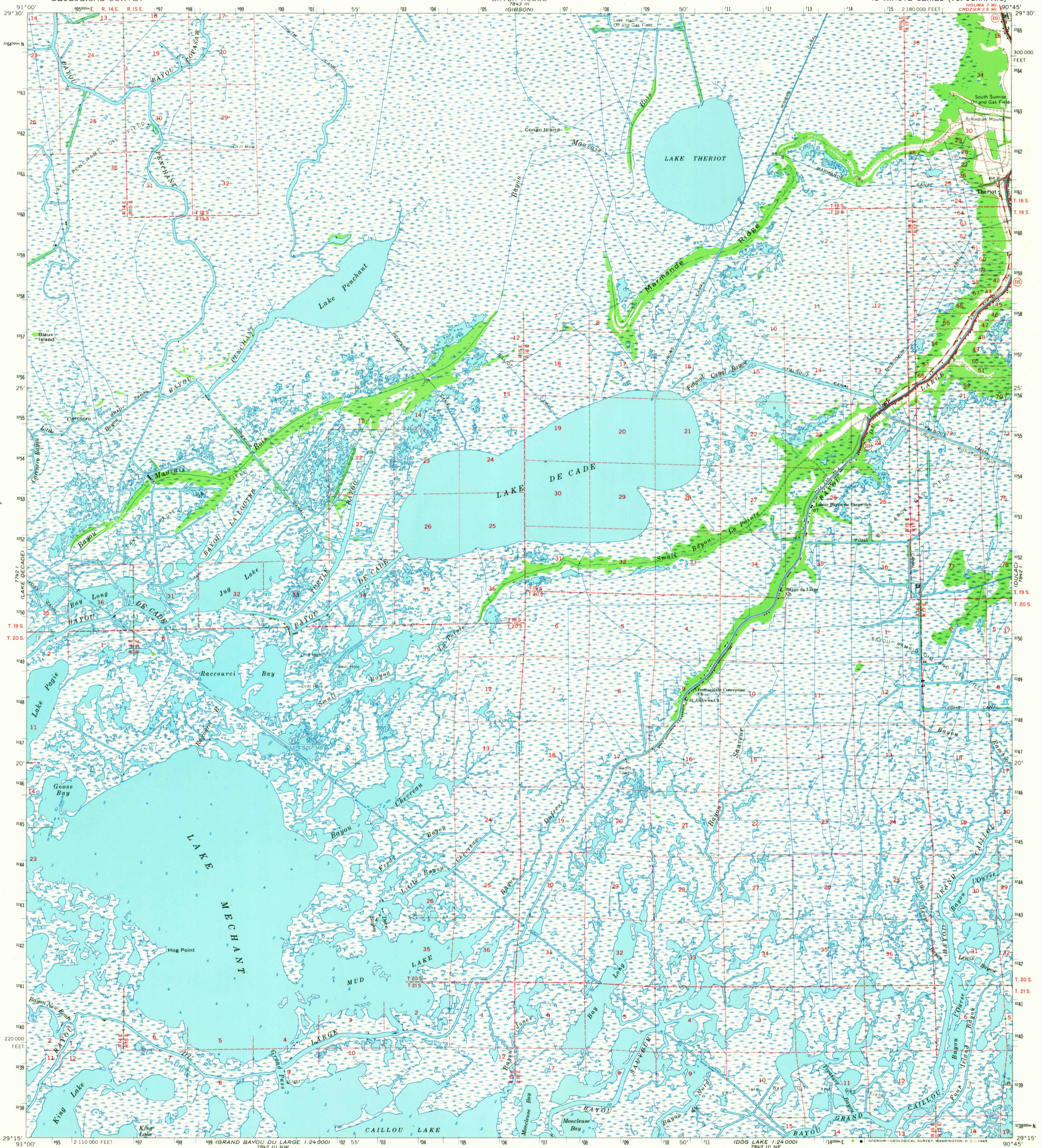
7842 III (MOBILE CITY)

7842 III (MOBILE CITY)

UNITED STATES
DEPARTMENT OF THE INTERIOR
GEOLOGICAL SURVEY

STATE OF LOUISIANA
DEPARTMENT OF PUBLIC WORKS
BATON ROUGE

BAYOU DU LARGE QUADRANGLE
LOUISIANA—TERREBONNE PARISH
15 MINUTE SERIES (TOPOGRAPHIC)



Mapped, edited, and published by the Geological Survey
Control by USGS and USC&GS

Compiled in 1964 from 1:24 000-scale maps dated 1964

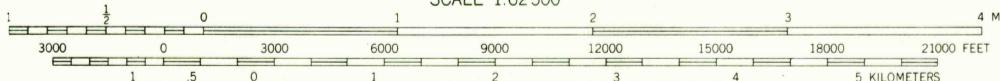
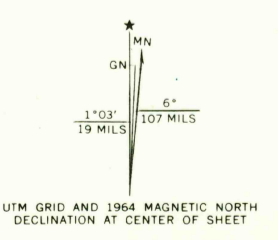
Selected hydrographic data compiled from USC&GS Charts 1050 (1962) and 1275 (1962). This information is not intended for navigational purposes

Polyconic projection. 1927 North American datum

10,000-foot grid based on Louisiana coordinate system, south zone

1000 meter Universal Transverse Mercator grid ticks, zone 15, shown in blue

Where omitted land lines have not been established or are not shown because of insufficient data



SCALE 1:62,500
CONTOUR INTERVAL 5 FEET
DATUM IS MEAN SEA LEVEL
SOUNDINGS IN FEET—DATUM IS MEAN LOW WATER
SHORELINE SHOWN REPRESENTS APPROXIMATE LINE OF MEAN HIGH WATER
THE MEAN RANGE OF TIDE IS APPROXIMATELY 1 FOOT

THIS MAP COMPLIES WITH NATIONAL MAP ACCURACY STANDARDS
FOR SALE BY U. S. GEOLOGICAL SURVEY, DENVER, COLORADO 80225 OR WASHINGTON, D. C. 20242
AND BY THE STATE OF LOUISIANA, DEPARTMENT OF PUBLIC WORKS, BATON ROUGE, LOUISIANA
A FOLDER DESCRIBING TOPOGRAPHIC MAPS AND SYMBOLS IS AVAILABLE ON REQUEST

USGS
Historical File
Topographic Division

ROAD CLASSIFICATION
Heavy-duty
Medium-duty
Light-duty
Unimproved dirt
State Route



U.S.G.S.
FILE COPY
TOPOGRAPHIC DIVISION

This area also covered by 7.5 minute, 1:24 000-scale maps: Lake Theriot 1964, Lake Penchant 1964, Lake Mechant 1964, and Bayou Sauvage 1964

BAYOU DU LARGE, LA.
N2915—W9045/15

1964
AMS 7842 IV—SERIES V785

OCT 1 4 1965

2610