

(ASHLAND)

UNITED STATES
DEPARTMENT OF THE INTERIOR
GEOLOGICAL SURVEY

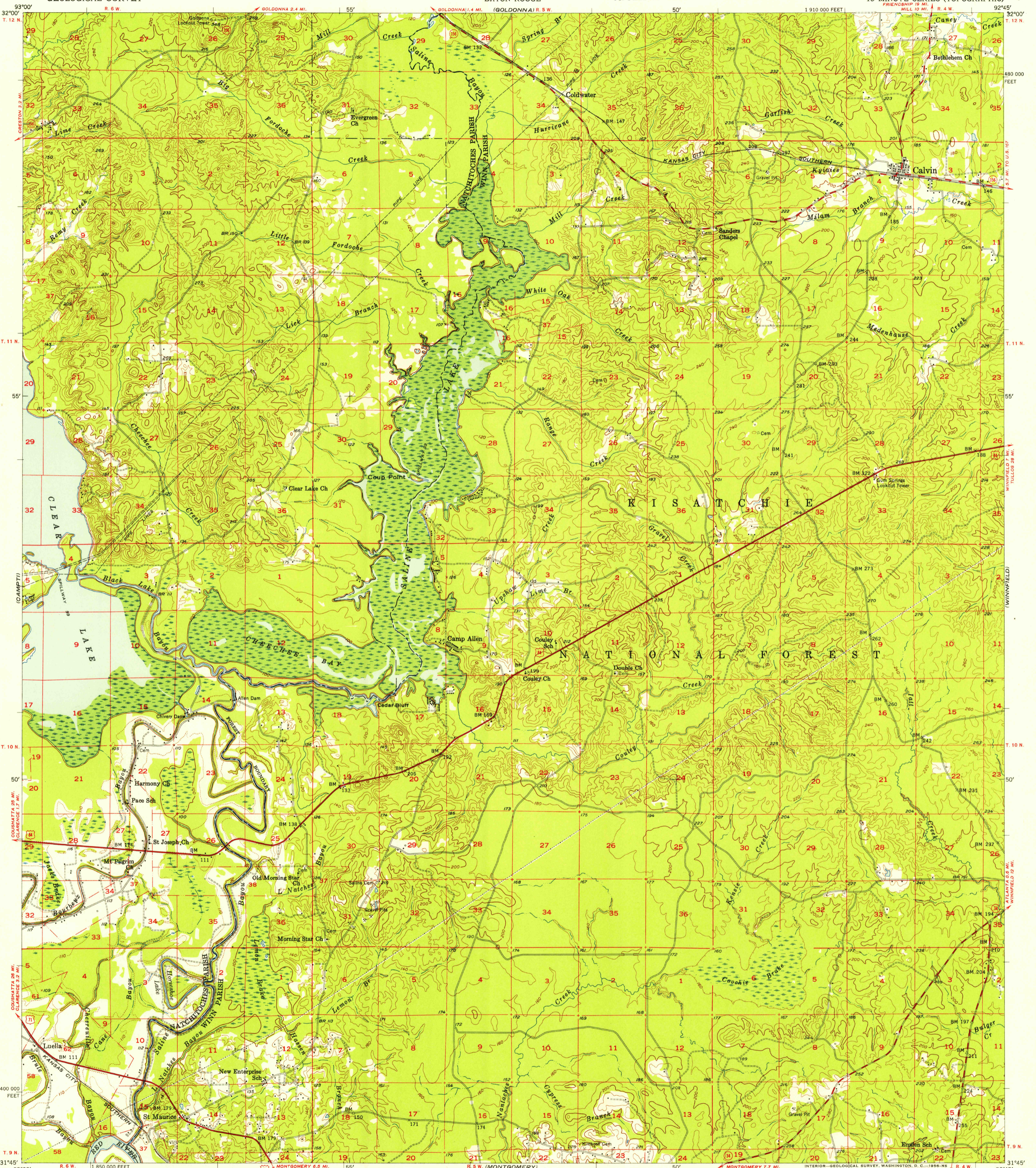
STATE OF LOUISIANA
DEPARTMENT OF PUBLIC WORKS
BATON ROUGE

U.S.G.S.
FILE COPY
TOPOGRAPHIC DIVISION

U.S.G.S.
FILE COPY
TOPOGRAPHIC DIVISION

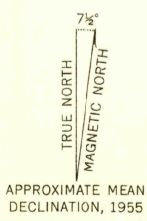
CALVIN QUADRANGLE
LOUISIANA
15 MINUTE SERIES (TOPOGRAPHIC)

(WONESBORO)

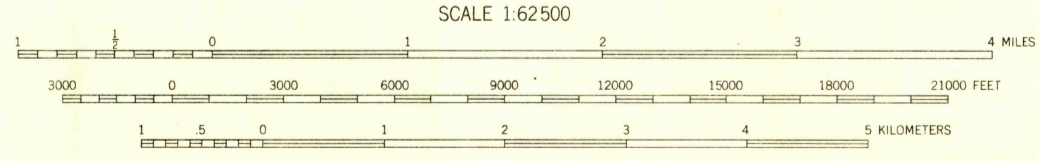


(PROVENCAL)

Mapped, edited, and published by the Geological Survey
Control by USGS, USC&GS, and Louisiana Geodetic Survey
Culture and drainage in part compiled from aerial photographs taken 1950. Topography by planetable surveys 1954-1955
Polyconic projection. 1927 North American datum
10,000-foot grid based on Louisiana coordinate system, north zone



APPROXIMATE MEAN DECLINATION, 1955



CONTOUR INTERVAL 20 FEET
DASHED LINES REPRESENT 10-FOOT CONTOURS
DATUM IS MEAN SEA LEVEL

THIS MAP COMPLIES WITH NATIONAL MAP ACCURACY STANDARDS
FOR SALE BY U. S. GEOLOGICAL SURVEY, FEDERAL CENTER, DENVER, COLORADO OR WASHINGTON 25, D. C.
AND BY THE STATE OF LOUISIANA, DEPARTMENT OF PUBLIC WORKS, BATON ROUGE 4, LOUISIANA
A FOLDER DESCRIBING TOPOGRAPHIC MAPS AND SYMBOLS IS AVAILABLE ON REQUEST

USGS
Historical File
Topographic Division



QUADRANGLE LOCATION

ROAD CLASSIFICATION
Heavy-duty ——— Light-duty ———
Medium-duty ——— Unimproved dirt ———
U. S. Route ——— State Route ———

U.S.G.S.
FILE COPY
TOPOGRAPHIC DIVISION

CALVIN, LA.
N3145-W9245/15

1955 JUN 8 1955

2615