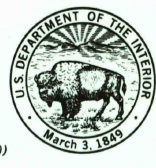


(LAC DES ALLEMANDS)

(LAKESALVADOR)

UNITED STATES
DEPARTMENT OF THE INTERIOR
GEOLOGICAL SURVEY

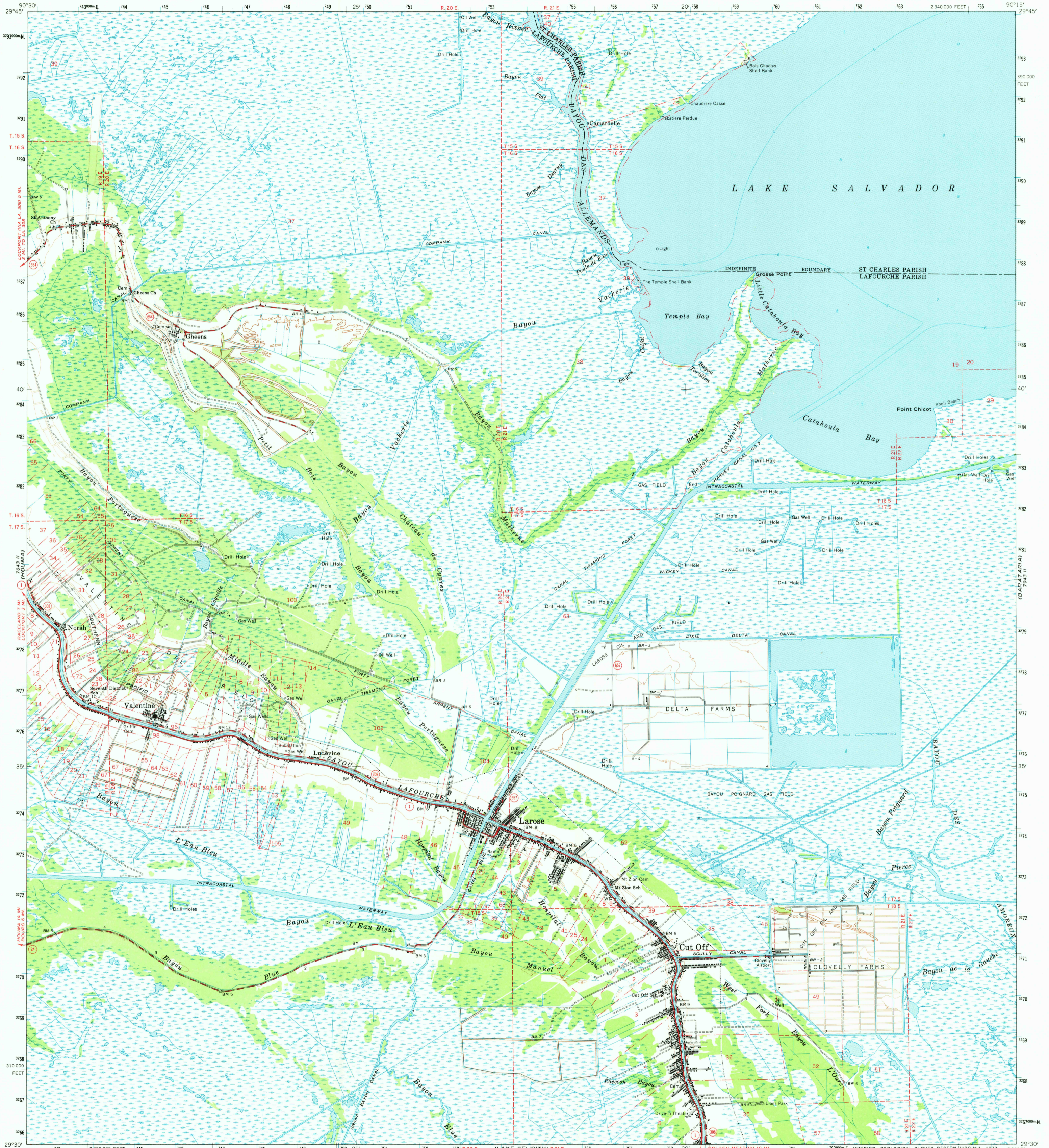
7943 IV SW
(DES ALLEMANDS 1:24 000)



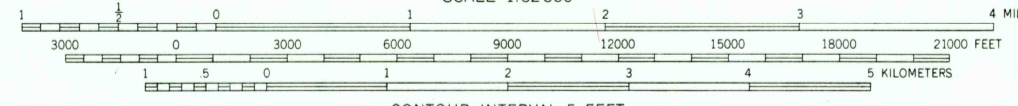
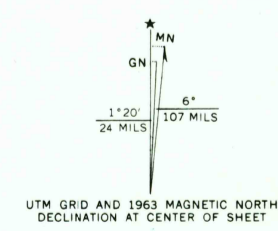
STATE OF LOUISIANA
DEPARTMENT OF PUBLIC WORKS
BATON ROUGE

7943 IV SE
(LAKE CATAQUATCHE WEST 1:24 000)

CUT OFF QUADRANGLE
LOUISIANA
15 MINUTE SERIES (TOPOGRAPHIC)



Mapped, edited, and published by the Geological Survey
Control by USGS, USC&GS, and Louisiana Geodetic Survey
Compiled in 1963 from 1:24,000-scale maps dated 1963
Selected hydrographic data compiled from USC&GS Charts
879 (1962) and 1050 (1962). This information is not
intended for navigational purposes
Polyconic projection. 1927 North American datum
10,000-foot grid based on Louisiana coordinate system, south zone
1000-meter Universal Transverse Mercator grid ticks,
zone 15, shown in blue
Where omitted, land lines have not been established
All or part of this quadrangle lies within a subsidence area



CONTOUR INTERVAL 5 FEET
NATIONAL GEODETIC VERTICAL DATUM OF 1929
DEPTH CURVES AND SOUNDINGS IN FEET—DATUM IS MEAN LOW WATER
THE RELATIONSHIP BETWEEN THE TWO DATUMS IS VARIABLE
SHORELINE SHOWN REPRESENTS THE APPROXIMATE LINE OF MEAN HIGH WATER
THE MEAN RANGE OF TIDE IS APPROXIMATELY 1/4 FOOT

THIS MAP COMPLIES WITH NATIONAL MAP ACCURACY STANDARDS
FOR SALE BY U.S. GEOLOGICAL SURVEY, DENVER, COLORADO 80225 OR RESTON, VIRGINIA 22092
AND STATE OF LOUISIANA, DEPARTMENT OF PUBLIC WORKS, BATON ROUGE, LOUISIANA 70804
A FOLDER DESCRIBING TOPOGRAPHIC MAPS AND SYMBOLS IS AVAILABLE ON REQUEST



ROAD CLASSIFICATION
Heavy-duty ——— Light-duty ———
Medium-duty ——— Unimproved d.r.t. - - - - -
State Route ○

This area also covered by 7.5 minute, 1:24 000-scale
maps: Catahoula Bay 1963; Greens 1963,
Larose 1963, and Cut Off 1963
CUT OFF, LA.
N2930—W9015/15
1963
AMS 7943 III—SERIES V785

RETURN TO:
USGS NMD HISTORICAL MAP ARCHIVES