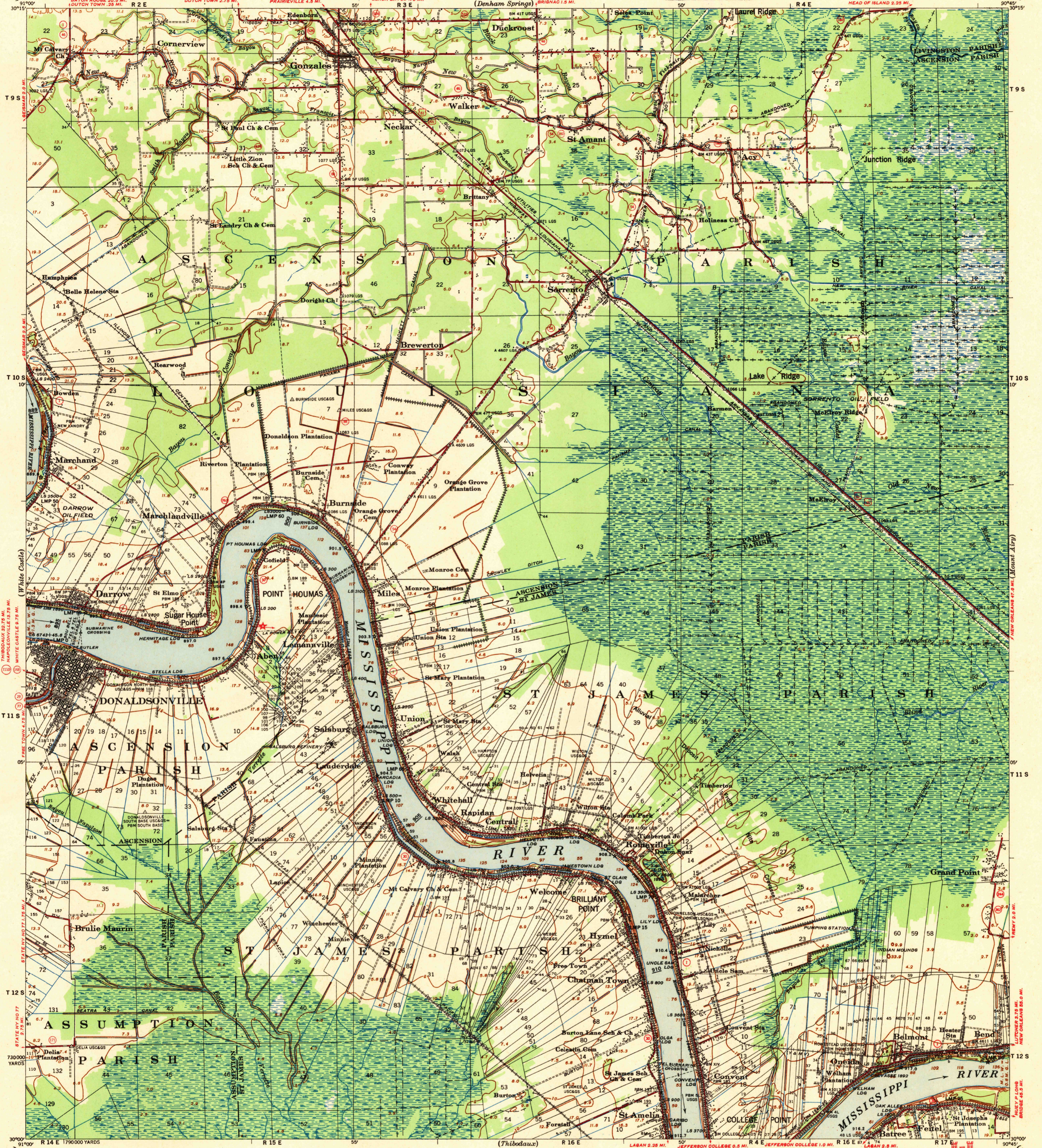


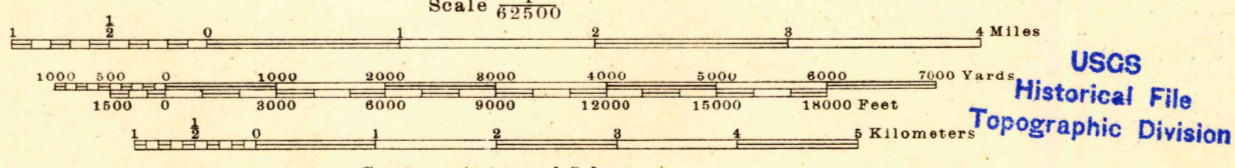
U.S.G.S. FILE COPY Inspection and Editing.

LOUISIANA DONALDSONVILLE QUADRANGLE GRID ZONE "C"

WAR DEPARTMENT CORPS OF ENGINEERS



Prepared under the direction of the President, Mississippi River Commission. Horizontal control by Mississippi River Commission, Corps of Engineers, U. S. Army, Second New Orleans District, U. S. Geological Survey, U. S. C. & G. S. and Louisiana Geodetic Survey (L.G.S.). Vertical control by Mississippi River Commission and Corps of Engineers, U. S. Army, Second New Orleans District 1937-38-39. Descriptions, elevations and geodetic positions of bench marks may be obtained from Second New Orleans Engineer District, New Orleans, La. Topography by Corps of Engineers, U. S. Army, Second New Orleans District, 1937. Political boundaries are shown according to best available information and are subject to change except where established by court decision. Dashed land lines are projected. Depths shown along thalweg in Mississippi River are below Mean Low Water as of survey October 1936 thru October 1937. Mean Low Water elevation is expressed in feet, Mean Gulf Level and is shown on East and West borders. Work under Flood Control Act as of Dec. 1937. Polyconic Projection, North American Datum 1929.



Scale 62500. Contour interval 5 feet. Datum is mean gulf level at Biloxi, Mississippi. Elevations differ from mean sea level elevations as determined by the U. S. Coast and Geodetic Survey, by small fractions of a foot. Persons interested may secure elevations of bench marks as determined by the latest U. S. C. & G. S. adjustment, by applying to the U. S. Coast and Geodetic Survey.

Additional copies may be procured from The President, Mississippi River Commission, Vicksburg, Miss. 20 cents per copy

U.S.G.S. FILE COPY Inspection and Editing.

DONALDSONVILLE, LA. EDITION OF 1939 N3000-W9045/15