

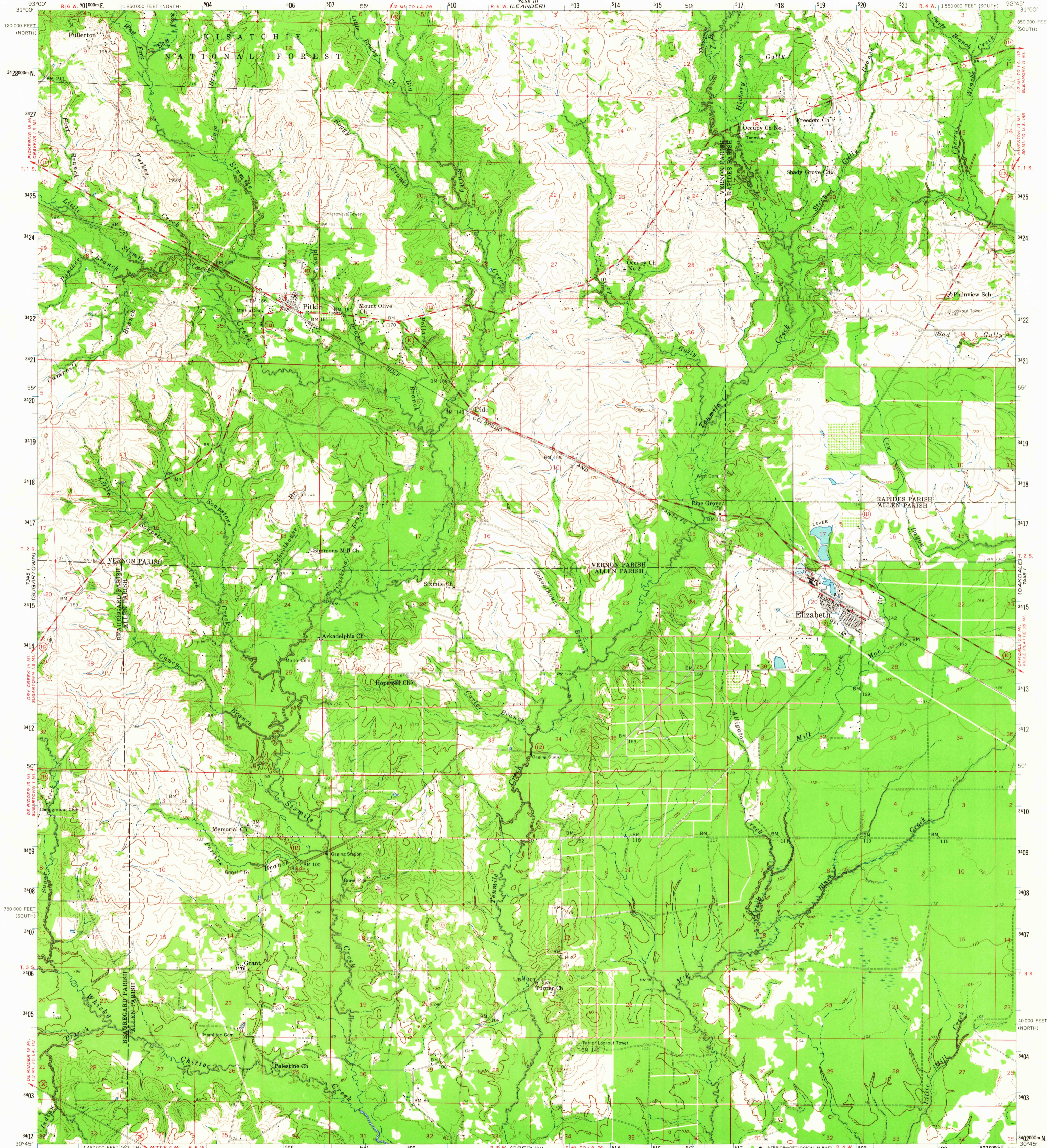
(SCALE)

UNITED STATES  
DEPARTMENT OF THE INTERIOR  
GEOLOGICAL SURVEY

STATE OF LOUISIANA  
DEPARTMENT OF PUBLIC WORKS  
BATON ROUGE

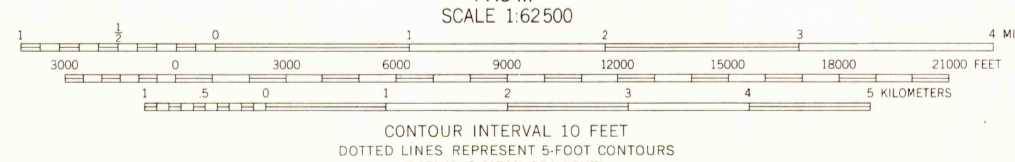
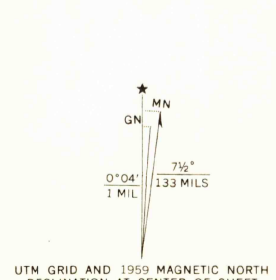
ELIZABETH QUADRANGLE  
LOUISIANA  
15 MINUTE SERIES (TOPOGRAPHIC)

(FOREST HILLS)



(LONGVILLE)

Mapped, edited, and published by the Geological Survey  
Control by USGS, USCGS, and Louisiana Geodetic Survey  
Compiled in 1959 from 1:24 000-scale maps of Steep Gully,  
Pitkin, Grant, and Elizabeth 7.5 minute quadrangles,  
surveyed 1945-1959  
Culture and drainage in part compiled from aerial photographs  
taken 1951. Topography by planetable surveys  
Polyconic projection. 1927 North American datum  
10,000-foot grids based on Louisiana coordinate system,  
north and south zones  
1000-meter Universal Transverse Mercator grid ticks,  
zone 15, shown in blue



CONTOUR INTERVAL 10 FEET  
DOTTED LINES REPRESENT 5-FOOT CONTOURS  
DATUM IS MEAN SEA LEVEL  
THIS MAP COMPLIES WITH NATIONAL MAP ACCURACY STANDARDS  
FOR SALE BY U. S. GEOLOGICAL SURVEY, DENVER 25, COLORADO OR WASHINGTON 25, D. C.  
AND BY THE STATE OF LOUISIANA, DEPARTMENT OF PUBLIC WORKS, BATON ROUGE 4, LOUISIANA  
A FOLDER DESCRIBING TOPOGRAPHIC MAPS AND SYMBOLS IS AVAILABLE ON REQUEST

Historical File  
Topographic Division



ROAD CLASSIFICATION  
Medium-duty — Light-duty  
Unimproved dirt — State Route

U.S.G.S. This area also covered by 1:24 000 scale maps of  
Steep Gully, Pitkin, Grant, and Elizabeth  
7.5 minute quadrangles, surveyed 1959  
FILE COPY  
TOPOGRAPHIC DIVISION  
ELIZABETH, LA.  
N 3045-W9245/15  
1959  
AMS 7445 IV-SERIES V785

MAR 17 1965  
3090