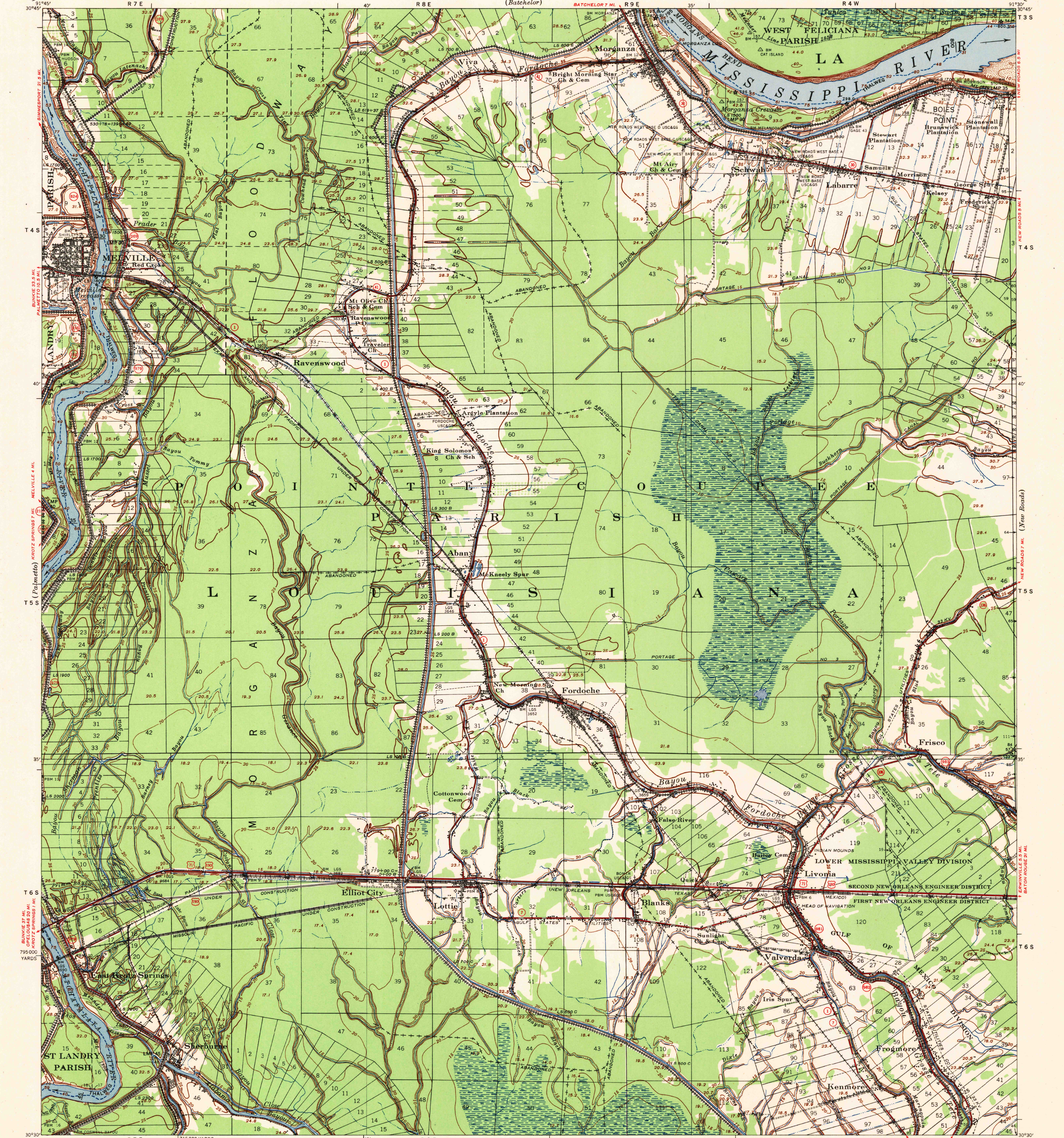


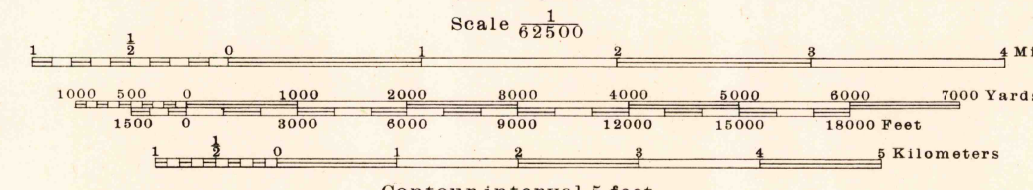
U. S. G. S. FILE COPY Inspection and Editing.

LOUISIANA FORDOCHE QUADRANGLE GRID ZONE "C"

WAR DEPARTMENT CORPS OF ENGINEERS



Prepared under the direction of the President, Mississippi River Commission. Horizontal control by Mississippi River Commission, Corps of Engineers, U. S. Army, Second New Orleans District, U. S. C. & G. S., U. S. G. S. and Louisiana Geodetic Survey (L. G. S.). Vertical control by Mississippi River Commission and Corps of Engineers, U. S. Army, Second New Orleans District. Descriptions, elevations and geodetic positions of bench marks may be obtained from Second New Orleans Engineer District, New Orleans, Louisiana. Topography by Corps of Engineers, U. S. Army, Second New Orleans District, 1935-38. Political boundaries are shown according to best available information and are subject to change except where established by court decision. Boundary between First and Second New Orleans Engineer Districts and Lower Mississippi Valley and Gulf of Mexico Divisions is the Texas and Pacific Railway from Valverde to the lower border of the sheet. Depths shown along thalweg in Mississippi River, (Survey of Nov. 1937), and Atchafalaya River, (Survey of Sept.-Nov. 1938), are below mean low water. Mean low water elevation in Mississippi River is 5.6 M. G. L. on the north border and 5.0 on the east border. Mean low water elevation in Atchafalaya River is 6.3 on upper left border and 6.1 on lower left border. Dashed land lines are projected from best available data. Work under Flood Control Act as of January, 1939. Polyconic Projection, North American Datum 1927.



Datum is mean gulf level at Biloxi, Mississippi. Elevations differ from mean sea level elevations as determined by the U. S. Coast and Geodetic Survey, by small fractions of a foot. Persons interested may secure elevations of bench marks as determined by the latest U. S. C. & G. S. adjustment, by applying to the U. S. Coast and Geodetic Survey. FIVE THOUSAND YARD GRID COMPUTED FROM "LAND SYSTEM FOR PROGRESSIVE MAPS IN THE U. S." ZONE C. U. S. C. & G. S. SPECIAL PUBLICATION NO. 59. Additional copies may be procured from The President, Mississippi River Commission Vicksburg, Miss. 10 cents per copy.

U. S. G. S. FILE COPY Inspection and Editing. ARMY MAP SERVICE, CORPS OF ENGINEERS, DEPARTMENT OF THE ARMY, 100832 2-48 1948. LEGEND: Levee, Retards and dikes, Revetment, River Gate, Levee mile post, Levee station, Towhead, LMP, LS, TH. APPROXIMATE MEAN DECLINATION 1935 INCREASE. Distances below Cairo gage on Mississippi River are shown at 5 mile intervals. Distances below head of Atchafalaya River are shown at 5 mile intervals. Distances above mouth of Bayou Grosse Tete are shown at 5 mile intervals. ROUTES USUALLY TRAVELED: HARD IMPROVED SURFACES, OTHER SURFACE IMPROVEMENTS, U. S. ROUTE, STATE ROUTE. PRICE 20 CENTS PER COPY. For quadrangle maps effective on and after 1 November 1941.

FORDOCHE, LA. EDITION OF 1939 N3030-W9130/15