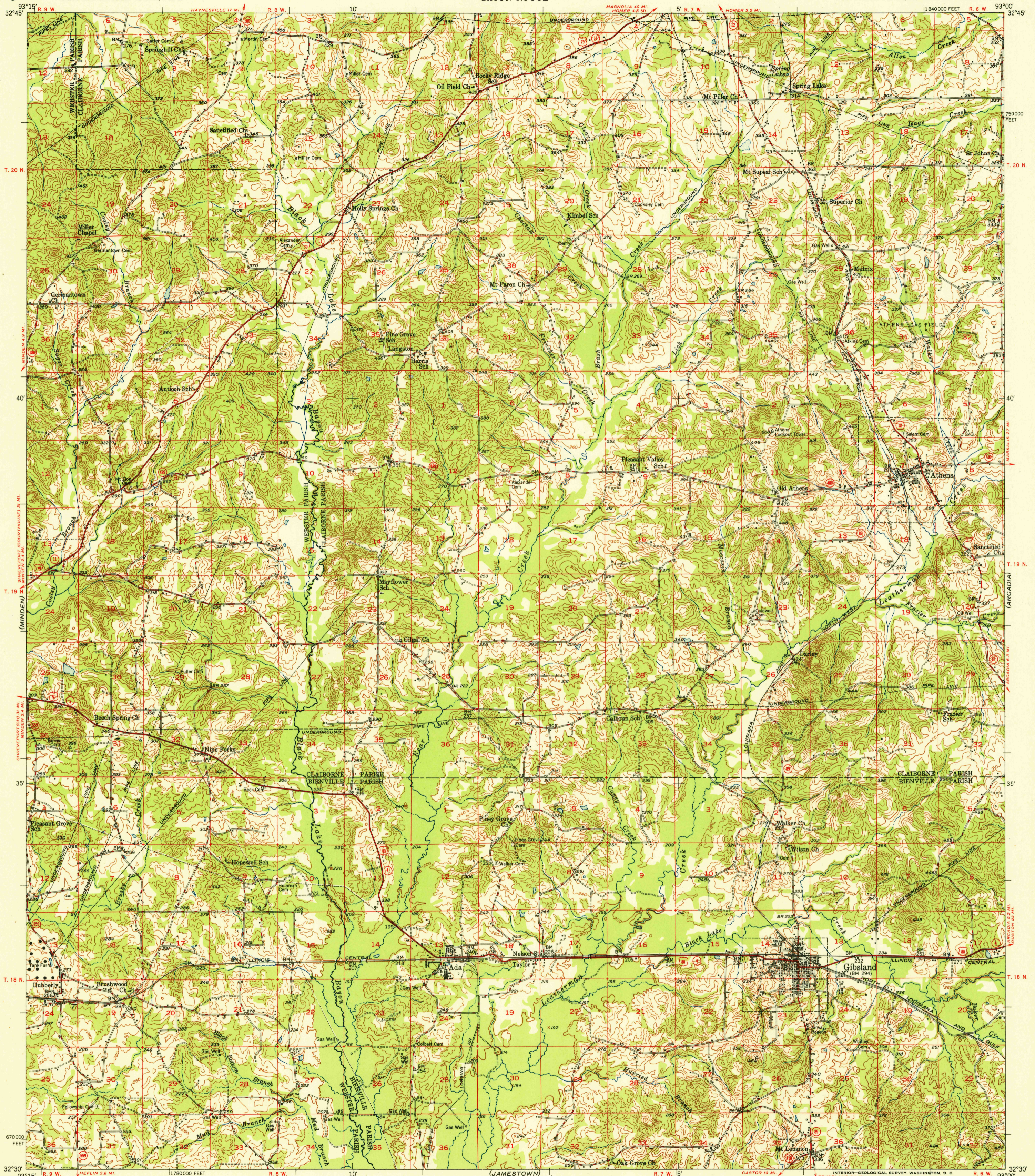


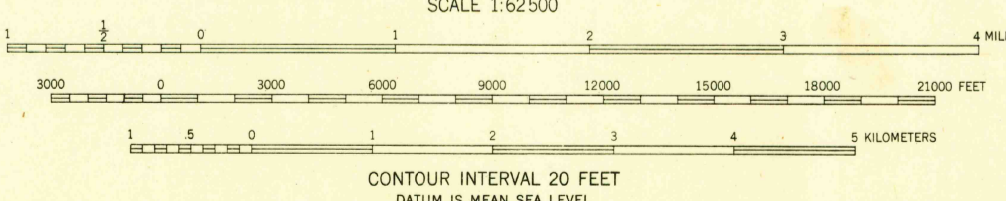
(SAREPTA)

U.S.G.S. FILE COPY Inspection and Editing.



Mapped, edited, and published by the Geological Survey Control by Louisiana Geodetic Survey USGS, USSCS, and USC&GS Culture and drainage in part compiled from aerial photographs taken 1939 Topography by plane-table methods 1948-1949 Polyconic projection. 1927 North American datum 10,000-foot grid based on Louisiana coordinate system, north zone

TRUE NORTH MAGNETIC NORTH APPROXIMATE MEAN DECLINATION, 1949



ROAD CLASSIFICATION: Heavy-duty ALL WEATHER ROADS, Medium-duty ALL WEATHER ROADS, Loose-surface, graded, or narrow hard-surface, U.S. Route, State Route, DRY WEATHER ROADS, Improved dirt, Unimproved dirt

USGS Historical File Topographic Division

U.S.G.S. FILE COPY Inspection and Editing.

GIBSLAND, LA. N3230-W9300/15 EDITION OF 1950

THIS MAP COMPLIES WITH NATIONAL MAP ACCURACY STANDARDS FOR SALE BY U.S. GEOLOGICAL SURVEY, FEDERAL CENTER, DENVER, COLORADO OR WASHINGTON 25, D. C. AND BY THE DEPARTMENT OF PUBLIC WORKS, BATON ROUGE 4, LOUISIANA A FOLDER DESCRIBING TOPOGRAPHIC MAPS AND SYMBOLS IS AVAILABLE ON REQUEST

NOV 27 1950 2115