

(LAMESTOWN)

UNITED STATES
DEPARTMENT OF THE INTERIOR
GEOLOGICAL SURVEY

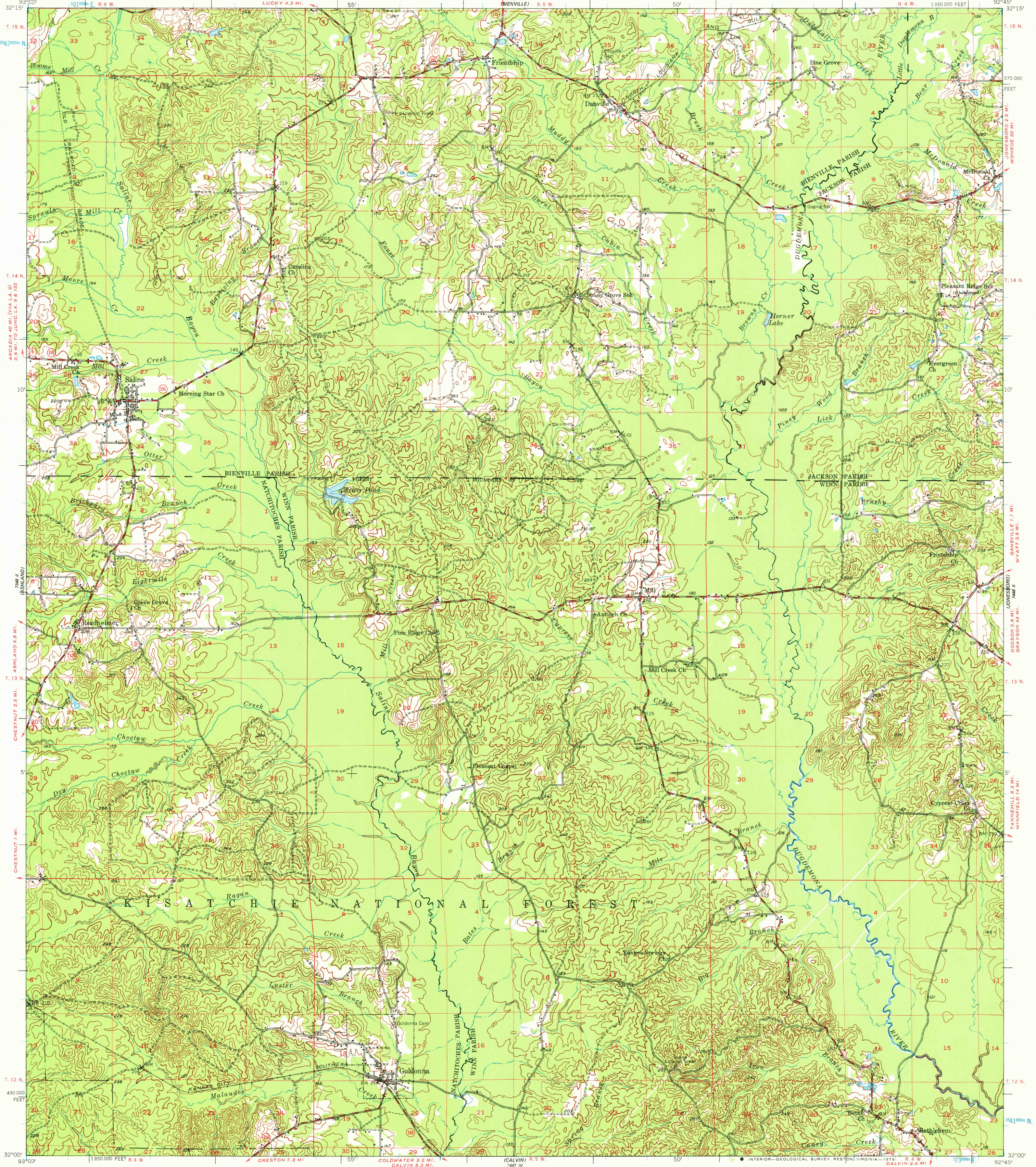


STATE OF LOUISIANA
DEPARTMENT OF PUBLIC WORKS
BATON ROUGE

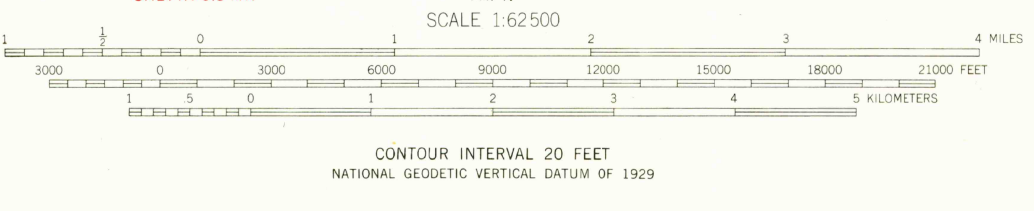
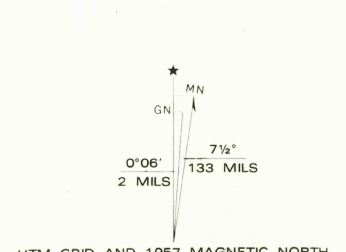
UNITED STATES
DEPARTMENT OF THE ARMY
CORPS OF ENGINEERS

GOLDONNA QUADRANGLE
LOUISIANA
15 MINUTE SERIES (TOPOGRAPHIC)

748 (MOORE)



Mapped, edited, and published by the Geological Survey
Control by USGS, USC&GS, and Louisiana Geodetic Survey
Topography by plane-table surveys 1944-1945. Culture
and drainage revised from aerial photographs
taken 1956. Field check 1956-1957
Polyconic projection. 1927 North American datum
10,000-foot grid based on Louisiana coordinate system, north zone
1000-meter Universal Transverse Mercator grid ticks,
zone 15, shown in blue
There may be private inholdings within the boundaries of
the National or State reservations shown on this map



THIS MAP COMPLIES WITH NATIONAL MAP ACCURACY STANDARDS
FOR SALE BY U.S. GEOLOGICAL SURVEY, DENVER, COLORADO 80225, OR RESTON, VIRGINIA 22092
AND STATE OF LOUISIANA, DEPARTMENT OF PUBLIC WORKS, BATON ROUGE, LOUISIANA 70804
A FOLDER DESCRIBING TOPOGRAPHIC MAPS AND SYMBOLS IS AVAILABLE ON REQUEST

USGS
Historical File
Topographic Division

GOLDONNA, LA.
N3200-W9245/15
1957
AMS 7448 III-SERIES V785

MAR 24 1979

2800