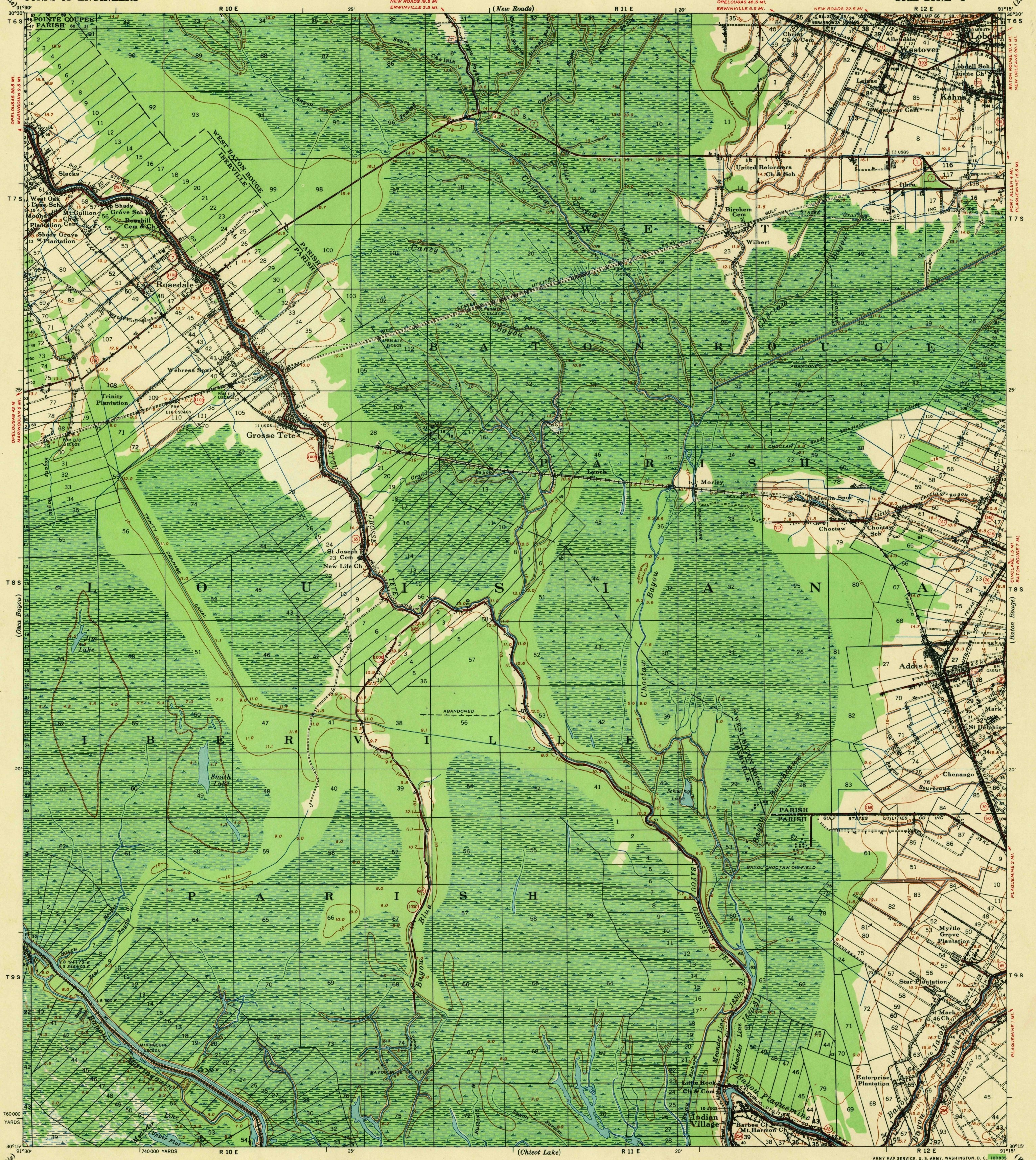
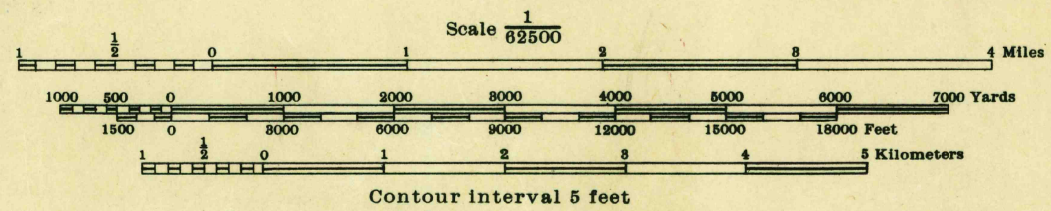


U. S. G. S.
FILE COPY
Inspection and Editing



Prepared under the direction of the President, Mississippi River Commission.
Horizontal control by Mississippi River Commission and Corps of Engineers,
U. S. Army, New Orleans District.
Vertical control by Mississippi River Commission and Corps of Engineers,
U. S. Army, New Orleans District.
Descriptions, elevations and geodetic positions of bench marks may be
obtained from New Orleans Engineer District, New Orleans, La.
Topography by Corps of Engineers, U. S. Army, New Orleans District, 1930-40.
Revised by Mississippi River Commission, 1932, 1935 and 1940.
Political boundaries are shown according to best available information
and are subject to change except where established by court decision.
Work under Flood Control Act shown as of December, 1940.
Polyconic Projection, North American Datum.



Scale 1/62500
1000 2000 3000 4000 5000 6000 7000 Yards
1800 3600 5400 7200 9000 10800 12600 14400 16200 Feet
0 1 2 3 4 5 Kilometers
Contour interval 5 feet

Datum is mean gulf level at Biloxi, Mississippi. Elevations differ from mean sea level elevations as determined by the U. S. Coast and Geodetic Survey, by small fractions of a foot. Persons interested may secure elevations of bench marks as determined by the latest U. S. C. & G. S. adjustment, by applying to the U. S. Coast and Geodetic Survey.

FIVE THOUSAND YARD GRID COMPUTED FROM "GRID SYSTEM FOR PROGRESSIVE MAPS IN THE U. S." ZONE C. U. S. G. S. SPECIAL PUBLICATION NO. 85
Additional copies may be procured from The President, Mississippi River Commission, Vicksburg, Miss. 20 cents per copy

USGS Historical File Topographic Division

Levee	Levee mile post	LMP
Retards and dikes	Levee station	LS
Revetment	Towhead	TH
River Gage		

Distances above mouth of Bayou Maringouin are shown at 5 mile intervals.
Distances above mouth of Bayou Grosse Tete are shown at 5 mile intervals.

ROUTES USUALLY TRAVELED
HARD IMPERVIOUS SURFACES
OTHER SURFACE IMPROVEMENTS

U. S. ROUTE STATE ROUTE
GROSSE TETE, LA.
EDITION OF 1940
N3015-W9115/15

U. S. G. S.
FILE COPY
Inspection and Editing