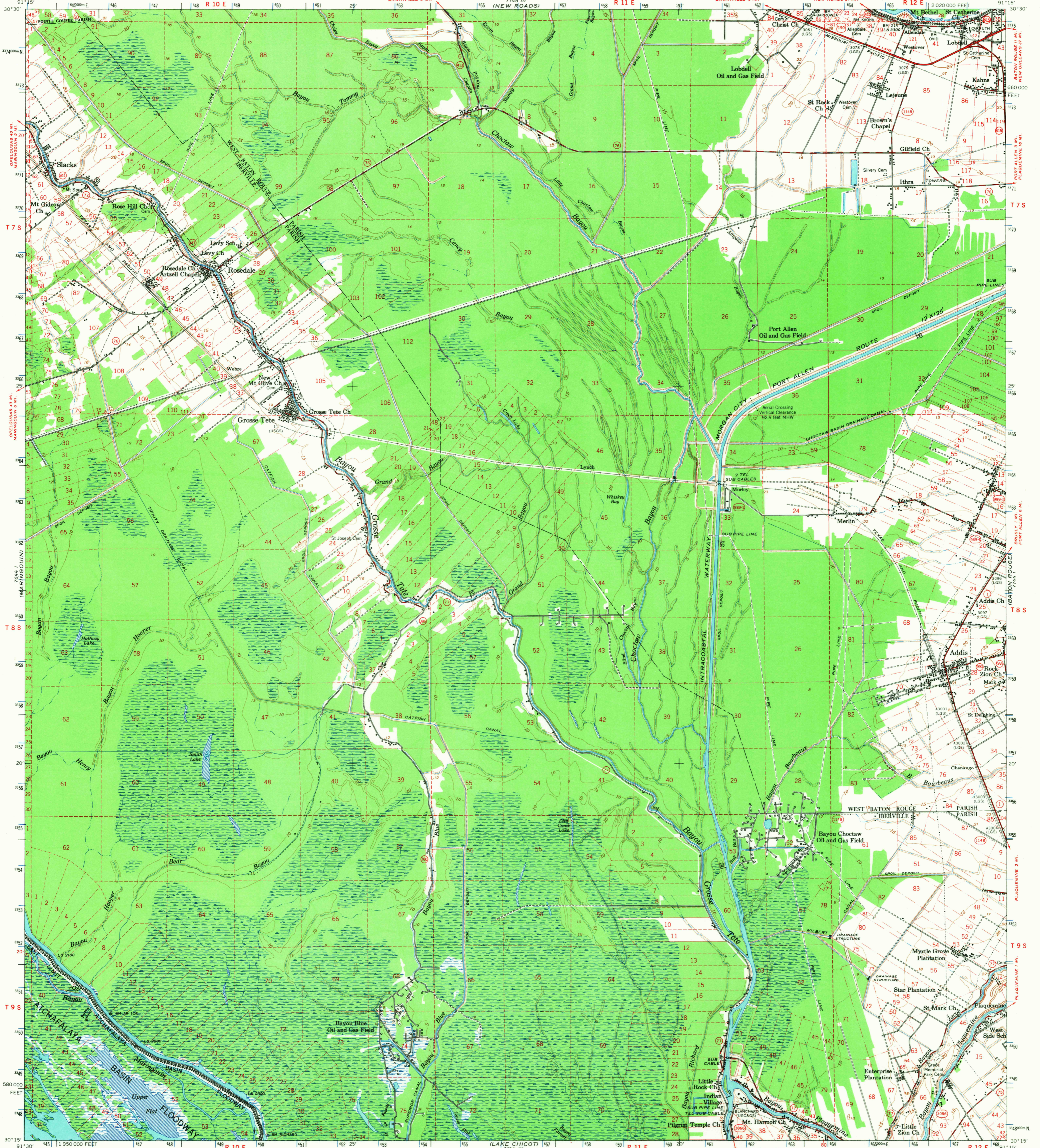
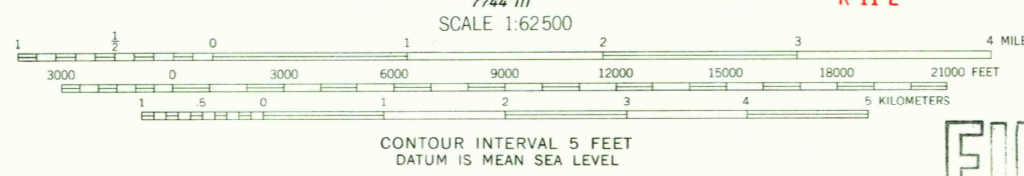
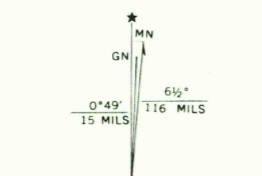


UNITED STATES
DEPARTMENT OF THE INTERIOR
GEOLOGICAL SURVEY

GROSSE TETE QUADRANGLE
LOUISIANA
15 MINUTE SERIES (TOPOGRAPHIC)



Compiled and edited by the Mississippi River Commission
Published by the Geological Survey
Control by USGS, USCG&S, USCE, and Louisiana Geodetic Survey
Compiled in 1961 from 1:24,000-scale USGS maps dated
1953-1954. Revised by Mississippi River Commission, 1962.
Polyconic projection. 1927 North American datum
10,000-foot grid based on Louisiana coordinate system, south zone
1000-meter Universal Transverse Mercator grid ticks, zone 15,
shown in blue



USGS Historical File
Topographic Division
FILE COPY
TOPOGRAPHIC DIVISION
LOUISIANA
QUADRANGLE LOCATION

ROAD CLASSIFICATION
Heavy-duty ——— Light-duty ———
Medium-duty ——— Unimproved dirt ———
U.S. Route ——— State Route ———
Distances on Intracoastal Waterway and Bayou Grosse Tete are
shown at 5 mile intervals

FOR SALE BY U.S. GEOLOGICAL SURVEY, DENVER, COLORADO 80225 OR WASHINGTON, D.C. 20242
AND BY THE STATE OF LOUISIANA, DEPARTMENT OF PUBLIC WORKS, BATON ROUGE, LOUISIANA 70804
A FOLDER DESCRIBING TOPOGRAPHIC MAPS AND SYMBOLS IS AVAILABLE ON REQUEST

This area also covered by 7.5-minute, 1:24,000-scale maps: Lobdell
1953, Grosse Tete 1954, Grosse Tete SW 1953, and Addis 1953

GROSSE TETE, LA.

N3015—W9115/15

1962

AMS 7744 IV—SERIES W785

3550
MAR 6 1968