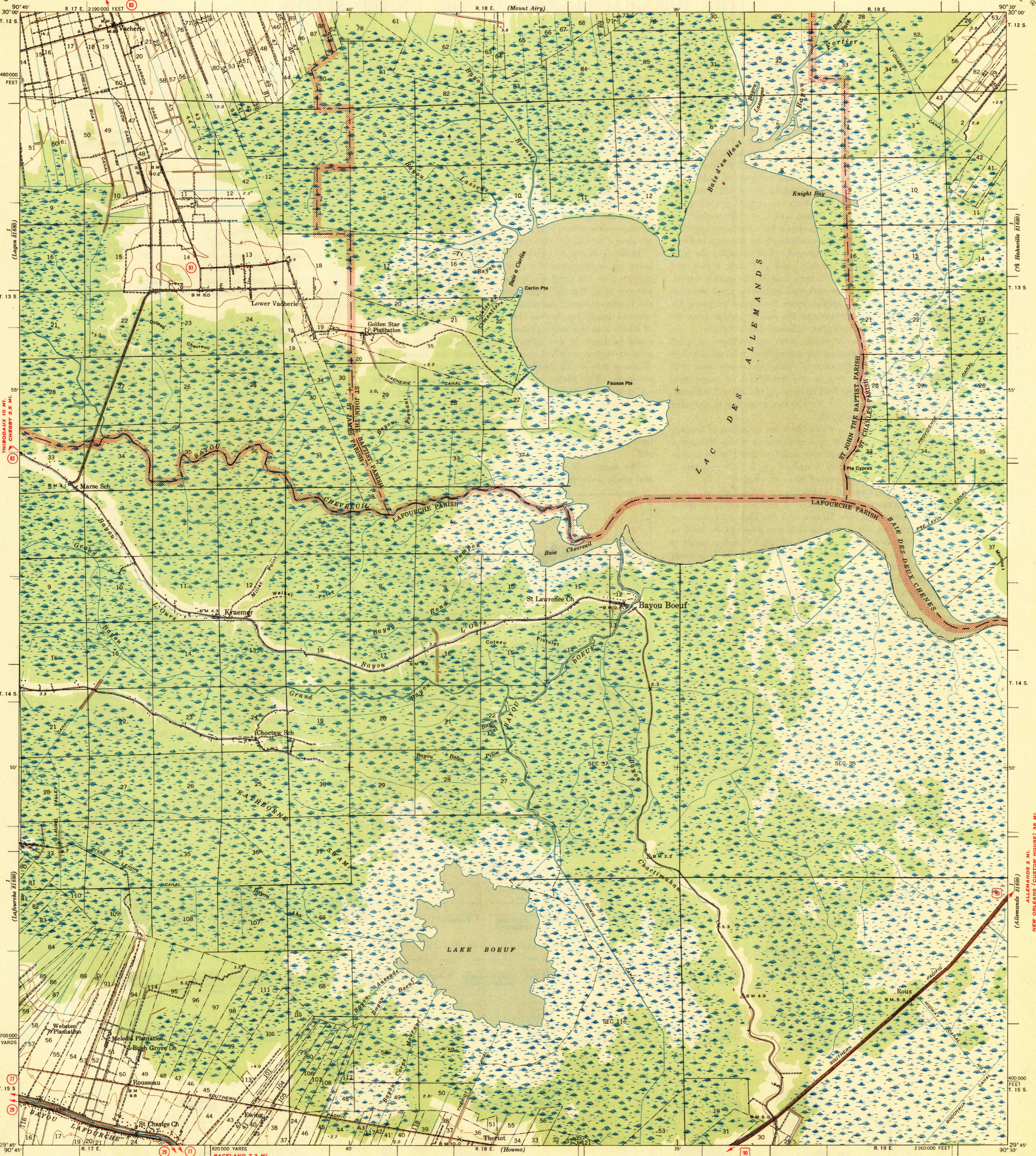


U.S.G.S.  
FILE COPY  
Inspection and Editing.

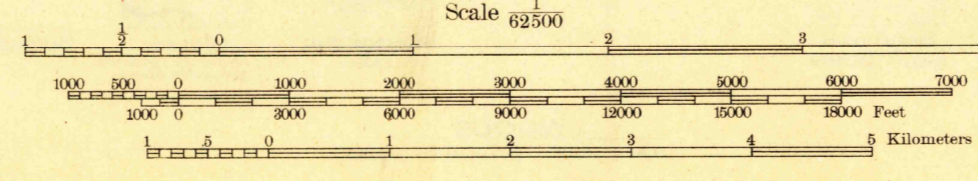
LOUISIANA  
LAC DES ALLEMANDS QUADRANGLE  
15-MINUTE SERIES

WALLACE 5.5 MI.  
JUNC. STATE NO. 30 0.6 MI.  
UNITED STATES  
DEPARTMENT OF THE INTERIOR  
GEOLOGICAL SURVEY



Topography by W. F. Schlax, J. N. Calkins, and J. A. Wright  
Surveyed in 1939  
Base compiled in cooperation with the State of Louisiana

APPROXIMATE MEAN  
DECLINATION, 1939



ROAD CLASSIFICATION  
1944  
Dependable hard-surface  
heavy-duty road  
Secondary hard-surface  
all-weather road  
Dirt road  
Loose-surface, graded  
Unimproved graded  
dry-weather roads  
Dirt road  
More than two lanes indicated along road with tick at point of change

Polyconic projection. 1927 North American datum  
5000 yard grid based on U. S. zone system, C  
10000 foot grid based on Louisiana (South)  
rectangular coordinate system  
Land lines added from General Land Office  
records adjusted to natural features and control

USGS  
Historical File  
Topographic Division

U.S.G.S.  
Historical File  
Topographic Division  
FILE COPY  
Inspection and Editing.

LAC DES ALLEMANDS, LA.  
Edition of 1944  
N2945-W9030/15

SEP 26 1944

4210