

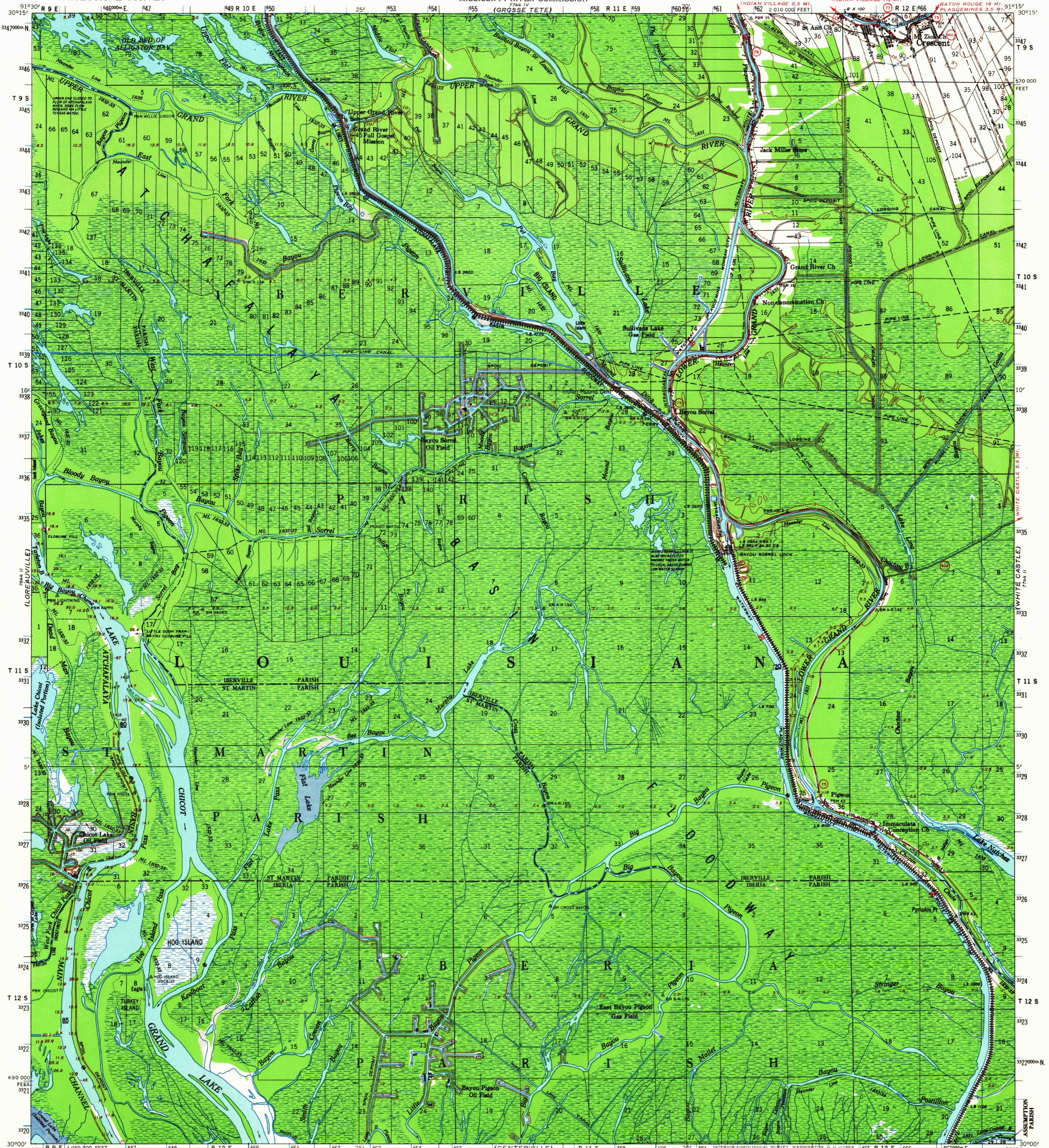
(MARINOUDIN)  
7644 I

UNITED STATES  
DEPARTMENT OF THE INTERIOR  
GEOLOGICAL SURVEY

UNITED STATES ARMY  
CORPS OF ENGINEERS  
MISSISSIPPI RIVER COMMISSION  
(GROSSE TETE)

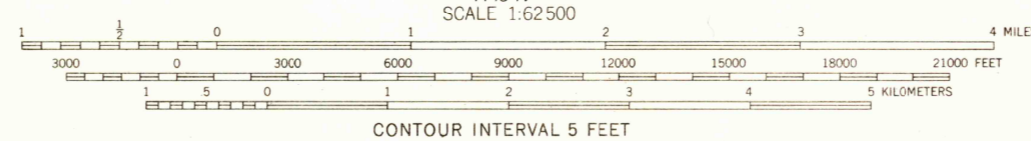
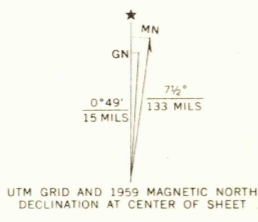
LAKE CHICOT QUADRANGLE  
LOUISIANA  
15 MINUTE SERIES (TOPOGRAPHIC)

(BATON ROUGE)  
7744 I



(JEANERETTE)  
7644 II

Mapped and edited by the Mississippi River Commission  
Published by the Geological Survey  
Control by USC&GS, USCE, MRC, and Louisiana Geodetic Survey  
Topography by planetable surveys 1930. Revised from aerial  
photographs taken 1959. Field check 1959  
Polyconic projection. 1927 North American datum  
10,000-foot grid based on Louisiana coordinate system, south zone  
1000-meter Universal Transverse Mercator grid ticks,  
zone 15, shown in blue  
Dashed land lines indicate approximate locations  
Contours in the Atchafalaya Basin Floodway are omitted  
Unchecked elevations are shown in brown



FOR SALE BY U.S. GEOLOGICAL SURVEY, DENVER 25, COLORADO, OR WASHINGTON 25, D. C.  
STATE OF LOUISIANA, DEPARTMENT OF PUBLIC WORKS, BATON ROUGE 4, LOUISIANA  
AND BY THE MISSISSIPPI RIVER COMMISSION, VICKSBURG, MISSISSIPPI  
A FOLDER DESCRIBING TOPOGRAPHIC MAPS AND SYMBOLS IS AVAILABLE ON REQUEST

USGS  
Historical File  
Topographic Division



ROAD CLASSIFICATION  
Medium-duty ——— Light-duty ———  
Unimproved dirt - - - - -  
State Route

The north half of this area also covered by 1:24,000-scale  
maps of Crescent and Pigeon Bay 7.5 minute quadrangles,  
surveyed 1953

LAKE CHICOT, LA.  
N3000-W9115/15  
1959

6290  
JUN 9 1964  
AMS 7744 III—SERIES W785