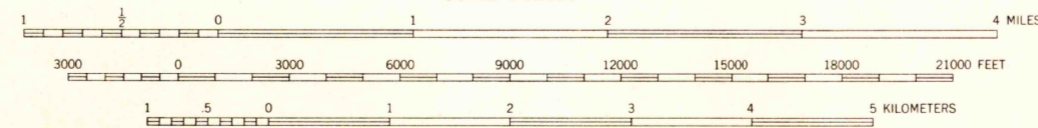


Mapped by the Army Map Service  
Published for civil use by the Geological Survey  
Control by USGS, USCGS, USCE, and Louisiana Geodetic Survey  
Compiled in 1956 from 1:25 000 scale maps of the Sieper, Lacamp, Fullerton Lake, and Leander SE 7.5 minute quadrangles. Topography from aerial photographs by photogrammetric methods. Aerial photographs taken 1951 and 1953. Field check 1954  
Polyconic projection. 1927 North American datum  
10,000-foot grid based on Louisiana coordinate system, north zone 1000-meter Universal Transverse Mercator grid ticks, zone 15, shown in blue  
Dashed land lines indicate approximate locations  
Unchecked elevations are shown in brown

7°  
TRUE NORTH  
MAGNETIC NORTH  
APPROXIMATE MEAN DECLINATION, 1954



CONTOUR INTERVAL 20 FEET  
DASHED LINES REPRESENT 10-FOOT CONTOURS  
DATUM IS MEAN SEA LEVEL

THIS MAP COMPLIES WITH NATIONAL MAP ACCURACY STANDARDS  
FOR SALE BY U. S. GEOLOGICAL SURVEY, DENVER 2, COLORADO OR WASHINGTON 25, D. C.  
AND BY THE STATE OF LOUISIANA, DEPARTMENT OF PUBLIC WORKS, BATON ROUGE 4, LOUISIANA  
A FOLDER DESCRIBING TOPOGRAPHIC MAPS AND SYMBOLS IS AVAILABLE ON REQUEST

USGS  
Historical File  
Topographic Division



U.S.G.S.  
FILE COPY  
TOPOGRAPHIC DIVISION

ROAD CLASSIFICATION  
Medium-duty — Light-duty  
Unimproved dirt —————

State Route  
This area also covered by 1:24 000 scale maps of Sieper, Lacamp, Fullerton Lake, and Leander SE, 7.5 minute quadrangles, surveyed 1954.  
LEANDER, LA.  
N3100—W9245/15  
1954

JAN 20 1959  
1885