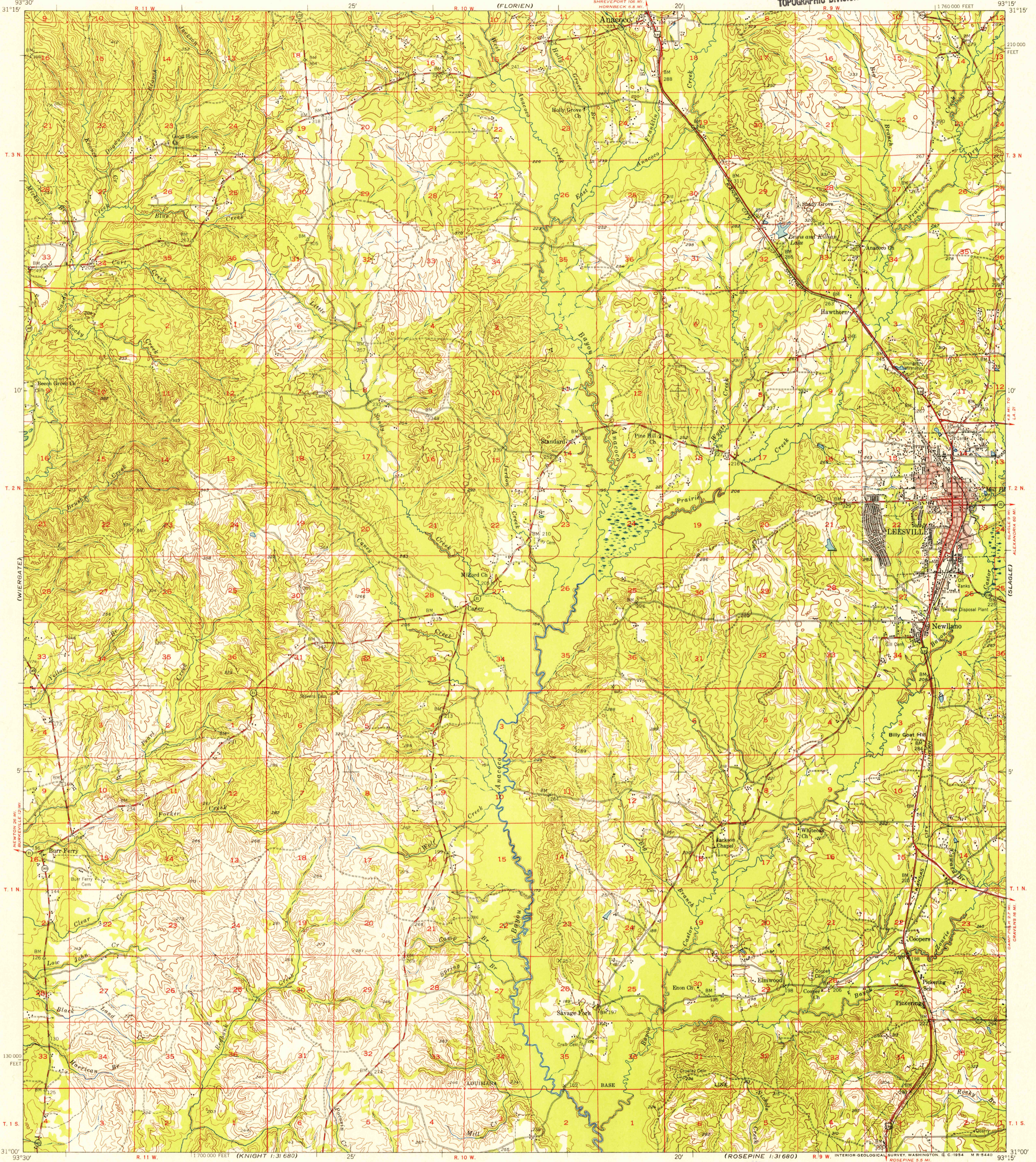
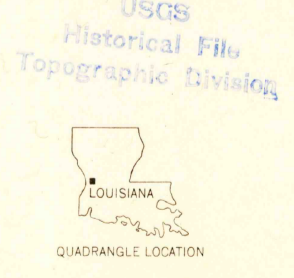
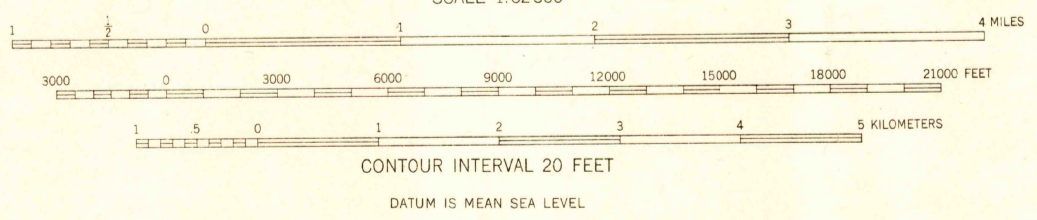
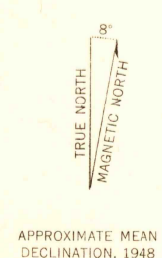


(WIERGATE)

(KISATCHIE)



Mapped by the Geological Survey
Revised by the Army Map Service
Edited and published for civil use by the Geological Survey
Control by USGS and USC&GS
Topography by plane-table surveys, 1941-1942
Planimetric detail revised from aerial photographs
taken 1947. Field check 1948
Polyconic projection. 1927 North American datum
10,000-foot grid based on Louisiana coordinate system,
north zone
Red tint indicates area in which only
landmark buildings are shown
No distinction is made between dwellings, barns,
commercial and industrial buildings



ROAD CLASSIFICATION

Heavy-duty	4 LANE 6 LANE	Light-duty
Medium-duty	4 LANE 6 LANE	Unimproved dirt

U.S. Route State Route

THIS MAP COMPLIES WITH NATIONAL MAP ACCURACY STANDARDS
FOR SALE BY U. S. GEOLOGICAL SURVEY, FEDERAL CENTER, DENVER, COLORADO OR WASHINGTON 25, D. C.
AND BY THE STATE OF LOUISIANA, DEPARTMENT OF PUBLIC WORKS, BATON ROUGE 4, LOUISIANA
A FOLDER DESCRIBING TOPOGRAPHIC MAPS AND SYMBOLS IS AVAILABLE ON REQUEST

JAN 4 1955