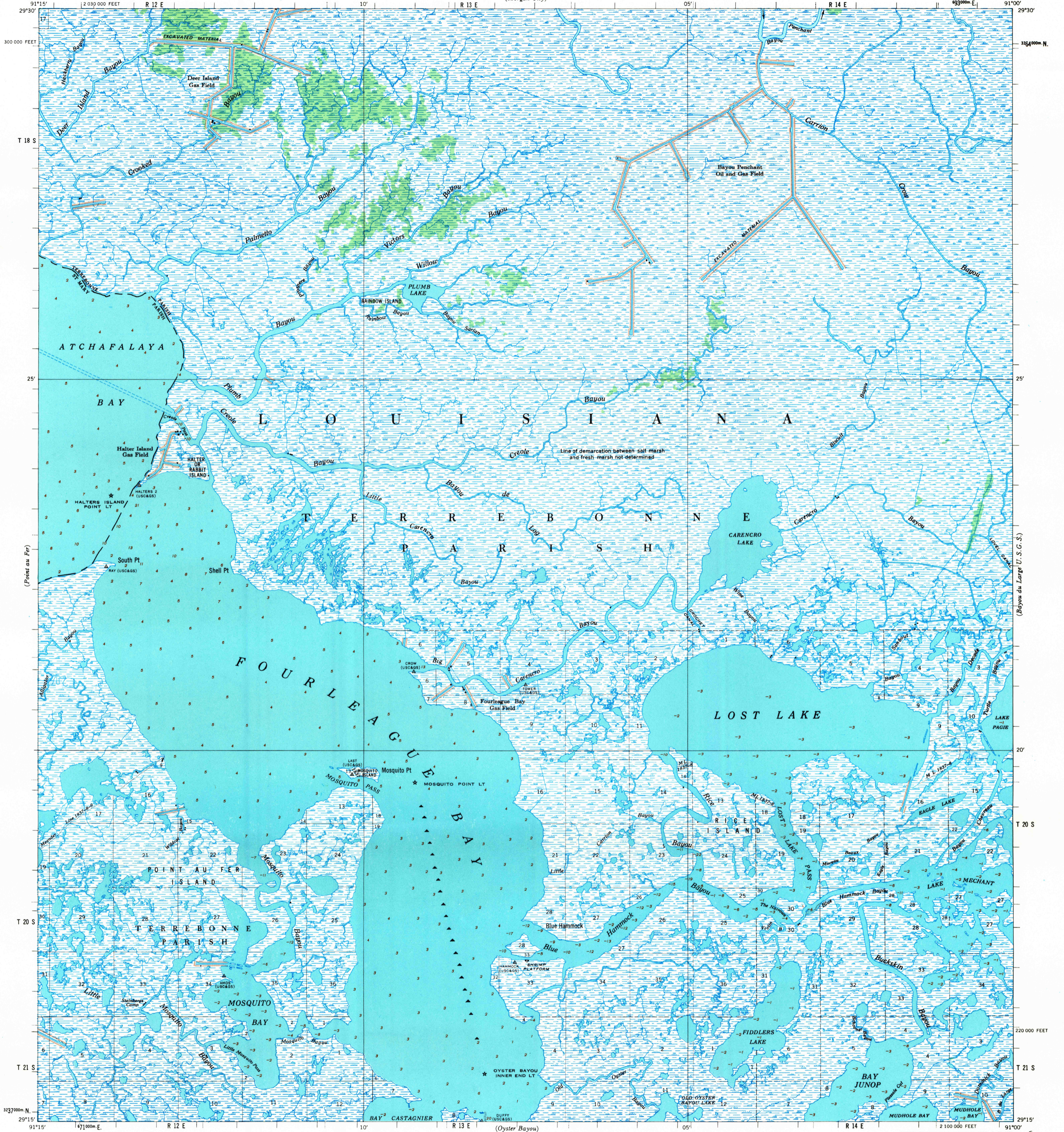


(Scale 1:50,000)

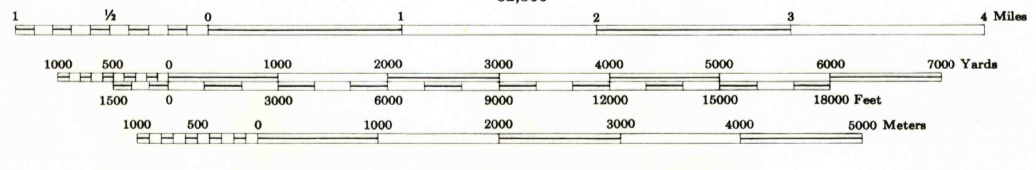
U. S. ARMY
CORPS OF ENGINEERS

LOST LAKE QUADRANGLE
LOUISIANA

(Gobson U. S. G. S.)



Prepared under the direction of the President, Mississippi River Commission, by U. S. Army Engineer District, New Orleans, Corps of Engineers.
 Edited and published by Mississippi River Commission, Corps of Engineers, U. S. Army, Vicksburg, Mississippi.
 Control by Mississippi River Commission and U. S. Army Engineer District, New Orleans, Corps of Engineers, New Orleans, La., and National Geodetic Survey.
 Polyconic Projection, 1927 North American Datum.
 Descriptions, elevations and geodetic positions of permanent survey marks may be obtained from U. S. Army Engineer District, New Orleans, Corps of Engineers, New Orleans, Louisiana.
 Topography by U. S. Army Engineer District, New Orleans, Corps of Engineers, 1930-31.
 Planimetry remapped from aerial photographs by stereo methods.
 Aerial photography June 1955.
 Depths in Atchafalaya Bay and Fourleague Bay from National Geodetic Charts Nos. 1275 and 1276, expressed in feet below mean low water.
 Elevations in Lost Lake, Lake Mechant, Bay Junop, Fiddlers Lake, Bay Castagnier, Mosquito Bay and various streams taken from National Geodetic Charts Nos. 1050, 1275, and 1276, expressed in feet mean sea level.
 Dashed land lines are projected.
 Political boundaries are shown according to best available information.
 Work under Flood Control Act as of October 1956.



APPROXIMATE MEAN DECLINATION 1970
 FOR CENTER OF SHEET
 ANNUAL MAGNETIC CHANGE 5' WESTERLY

LEGEND
 Levee Levee station L.S.
 Retards and dikes Towhead T.H.
 Revetment Gaging Station G.S.

Maximum elevation is less than 5 feet
 DATUM IS MEAN SEA LEVEL
 ONE THOUSAND METER UNIVERSAL TRANSVERSE MERCATOR GRID.
 ZONE 15 IS INDICATED BY TICKS OUTSIDE OF THE NEATLINE
 LOUISIANA STATE GRID ZONE SOUTH IS INDICATED BY DOTTED TICKS OUTSIDE OF THE NEATLINE AT 10,000 FOOT INTERVALS

LOST LAKE, LOUISIANA
 EDITION OF 1957
 N2915-W9100/15

(Grand Bayou et Large U. S. G. S.)