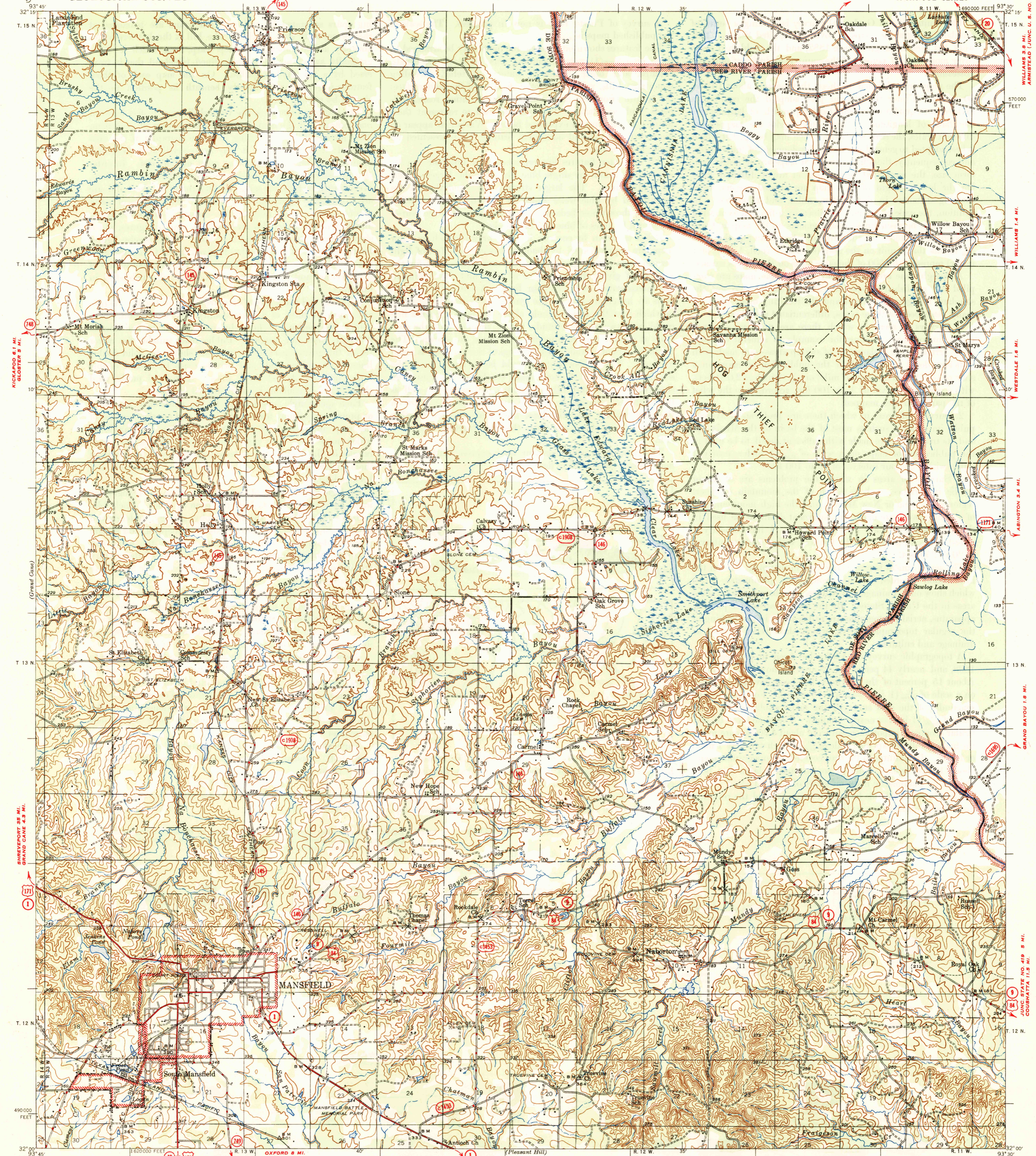


U.S.G.S.
FILE COPY
Inspection and Editing.

UNITED STATES
DEPARTMENT OF THE INTERIOR
GEOLOGICAL SURVEY

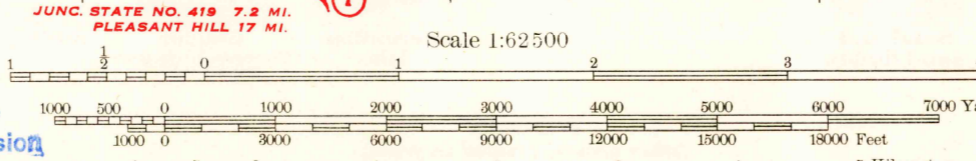
STATE OF LOUISIANA
DEPARTMENT OF PUBLIC WORKS
BATON ROUGE

SHREVEPORT (CIVIC CENTER) 25 MI.
CASPIANA 3.8 MI.
LOUISIANA
MANSFIELD QUADRANGLE
15-MINUTE SERIES



Maped by the Geological Survey
1943-1945
Only landmark buildings are shown
in Mansfield and South Mansfield
JUNC. STATE NO. 747 2 MI.
LOGANSPORT 16 MI.

USCS
Historical File
Topographic Division



Scale 1:62500
Miles
Kilometers
Contour interval 20 feet
Datum is mean sea level
Polyconic projection. 1927 North American datum
10000 foot grid based on Louisiana (North)
rectangular coordinate system

U.S.G.S.
FILE COPY
Inspection and Editing.

MANSFIELD, LA.
Edition of 1947
N 3200-W9330/15

JUN 20 1947