

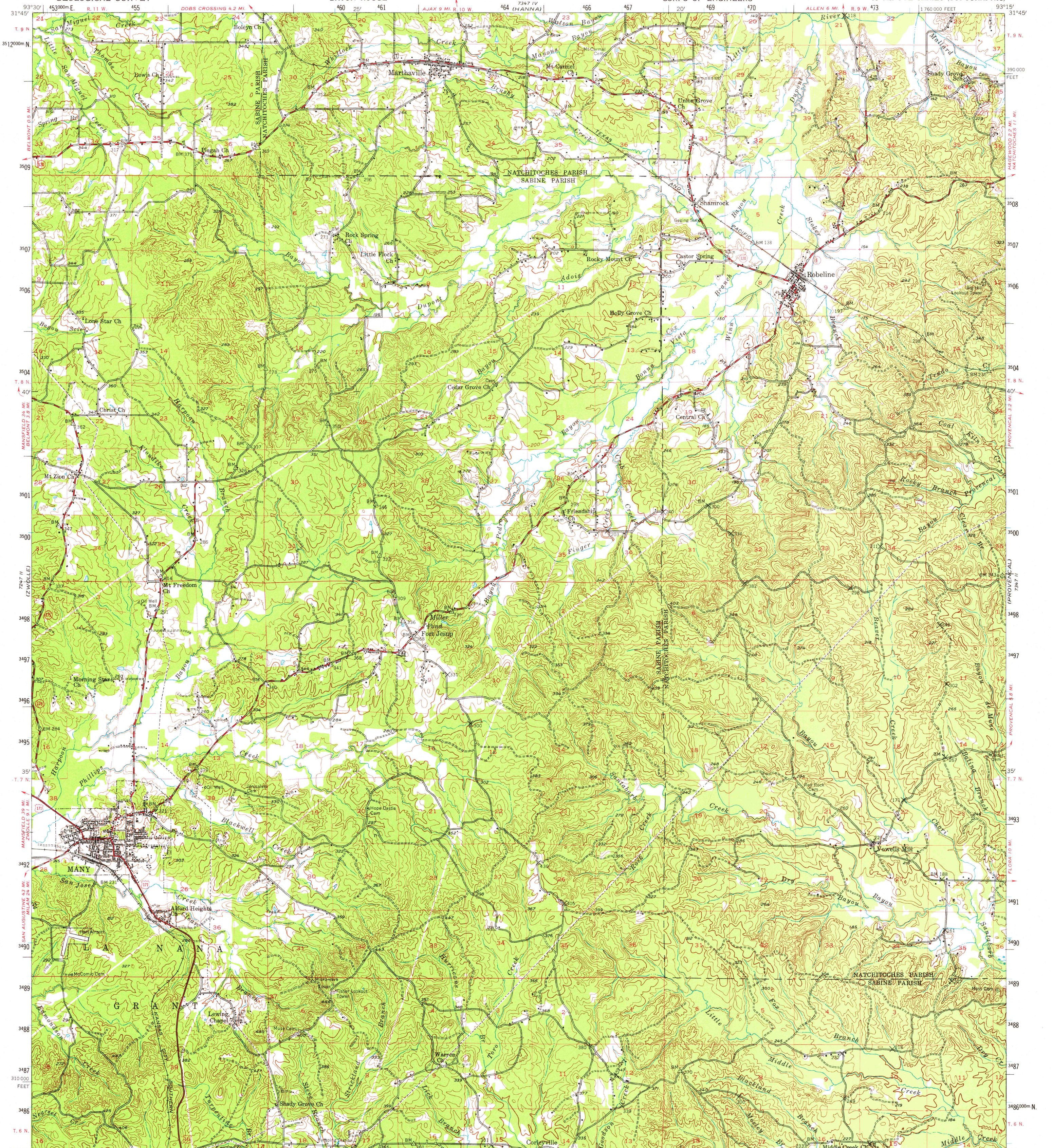


UNITED STATES
DEPARTMENT OF THE INTERIOR
GEOLOGICAL SURVEY

STATE OF LOUISIANA
DEPARTMENT OF PUBLIC WORKS
BATON ROUGE

UNITED STATES
DEPARTMENT OF THE ARMY
CORPS OF ENGINEERS

MANY QUADRANGLE
LOUISIANA
15 MINUTE SERIES (TOPOGRAPHIC)



Mapped, edited, and published by the Geological Survey
Control by USGS, USC&GS, and Louisiana Geodetic Survey
Topography by planetable surveys 1941-1942
Culture and drainage revised from aerial photographs taken 1956. Field check 1957
Polyconic projection. 1927 North American datum
10,000-foot grid based on Louisiana coordinate system north zone
1000-meter Universal Transverse Mercator grid ticks, zone 15, shown in blue

UTM GRID AND 1957 MAGNETIC NORTH DECLINATION AT CENTER OF SHEET

SCALE 1:62,500

CONTOUR INTERVAL 20 FEET
NATIONAL GEODETIC VERTICAL DATUM OF 1929

ROAD CLASSIFICATION
Heavy-duty ——— Light-duty ———
Medium-duty ——— Unimproved dirt ———
U. S. Route (red circle) State Route (white circle)

QUADRANGLE LOCATION

FOR SALE BY U.S. GEOLOGICAL SURVEY, DENVER, COLORADO 80225, OR RESTON, VIRGINIA 22092
AND STATE OF LOUISIANA, DEPARTMENT OF PUBLIC WORKS, BATON ROUGE, LOUISIANA 70804
A FOLDER DESCRIBING TOPOGRAPHIC MAPS AND SYMBOLS IS AVAILABLE ON REQUEST

MANY, LA SEP 13 1979
N3130-W9315/15
1957
AMS 7347 III-SERIES V785

USGS
Historical File
Topographic Division

2650