

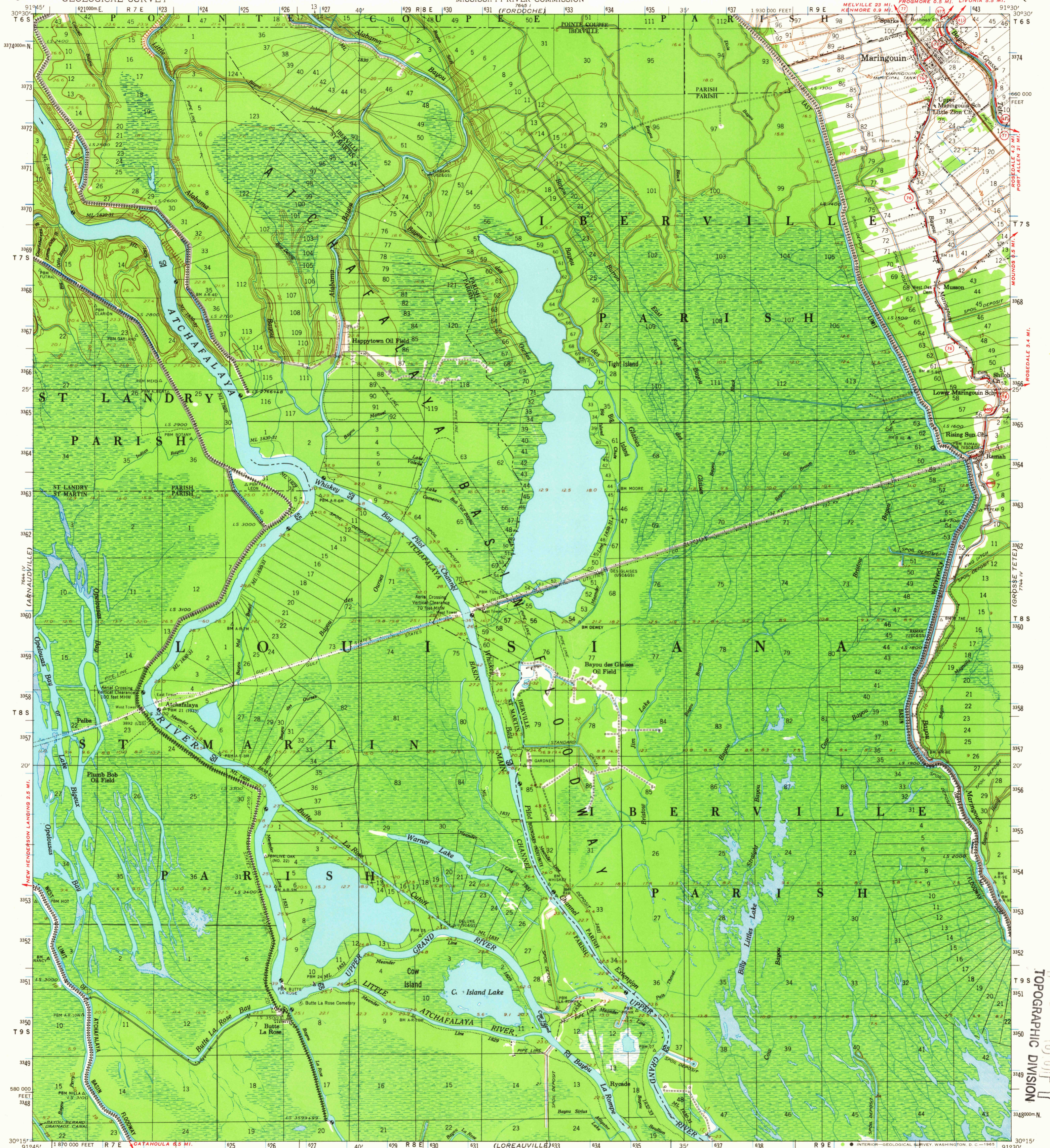
(PALMETTO)

UNITED STATES
DEPARTMENT OF THE INTERIOR
GEOLOGICAL SURVEY

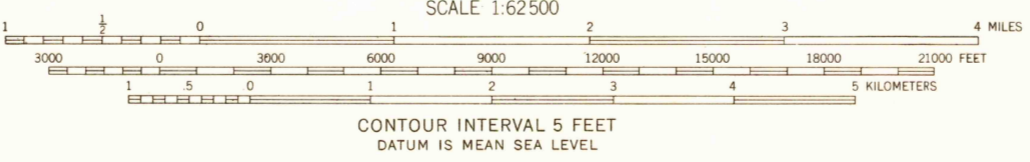
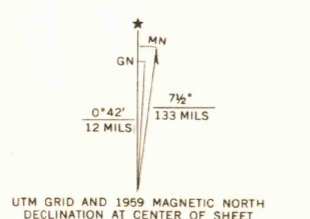
UNITED STATES ARMY
CORPS OF ENGINEERS
MISSISSIPPI RIVER COMMISSION

MARINGOIN QUADRANGLE
LOUISIANA
15 MINUTE SERIES (TOPOGRAPHIC)

(NEW ROADS)



Maped and edited by the Mississippi River Commission
Published by the Geological Survey
Control by USC&GS, USCE, MRC, and Louisiana Geodetic Survey
Topography by planetable surveys 1930. Revised from aerial
photographs taken 1959. Field check 1959
Polyconic projection. 1927 North American datum
10,000-foot grid based on Louisiana coordinate system, south zone
1000-meter Universal Transverse Mercator grid ticks,
zone 15, shown in blue
Unchecked elevations are shown in brown



USCS
Historical File
Topographic Division

ROAD CLASSIFICATION
Medium-duty — Light-duty
Unimproved dirt —
State Route
The east half of this area also covered by 1:24,000-scale maps
of Maringouin and Cow Bayou 7.5 minute quadrangles,
surveyed 1953



FOR SALE BY U. S. GEOLOGICAL SURVEY, DENVER, COLORADO 80225, OR WASHINGTON, D. C. 20242,
STATE OF LOUISIANA, DEPARTMENT OF PUBLIC WORKS, BATON ROUGE 4, LOUISIANA,
AND BY THE MISSISSIPPI RIVER COMMISSION, VICKSBURG, MISSISSIPPI
A FOLDER DESCRIBING TOPOGRAPHIC MAPS AND SYMBOLS IS AVAILABLE ON REQUEST

MARINGOIN, LA.
N 3015-W 9130/15

1959
AMS 7644 I-SERIES V785

USGS
F115 COPY
TOPOGRAPHIC DIVISION

5735
JAN 7 1966

(ST. MARTINVILLE)

(LAKE CHICOT)