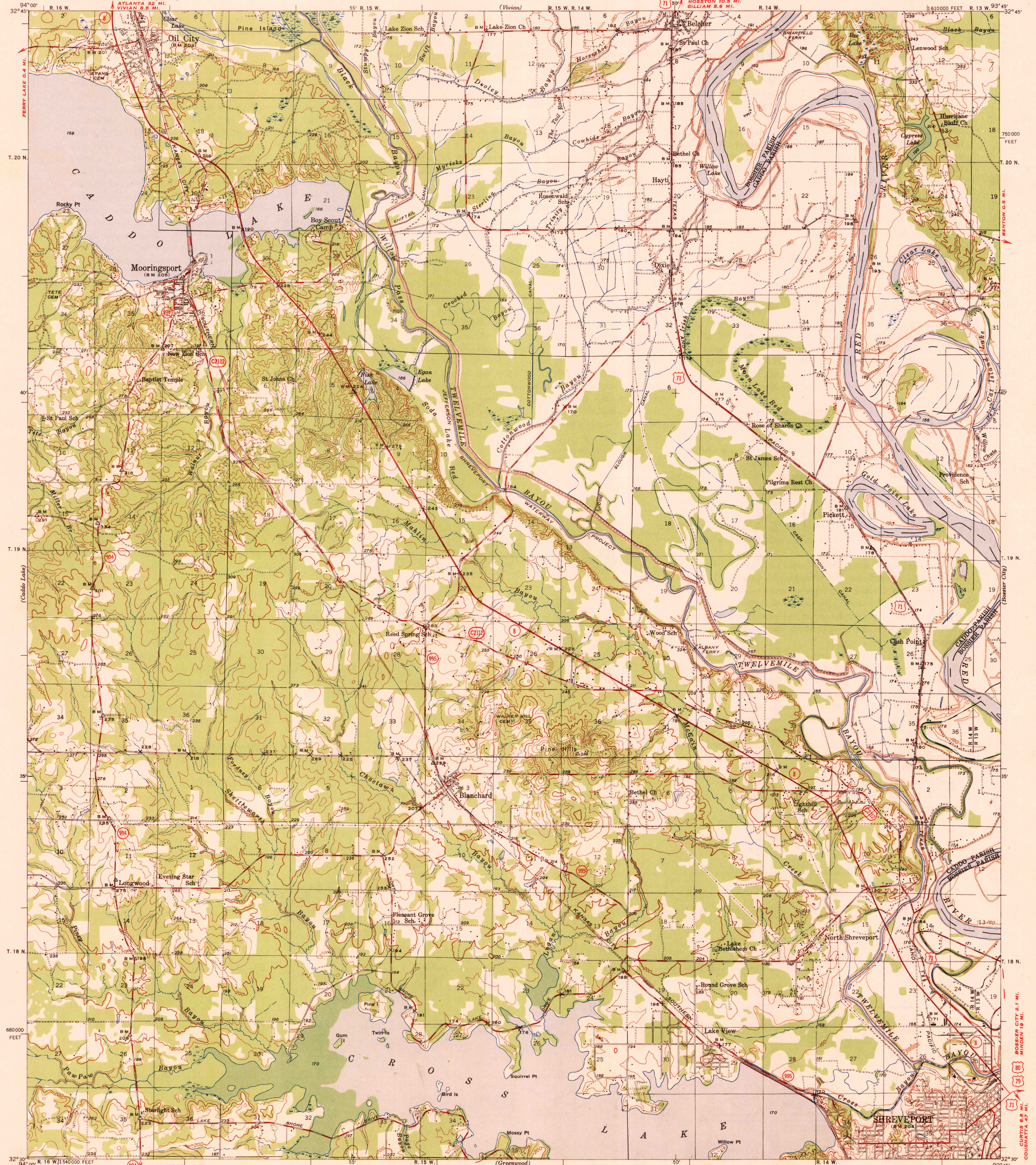


U. S. G. S.
FILE COPY
Inspection and Editing.



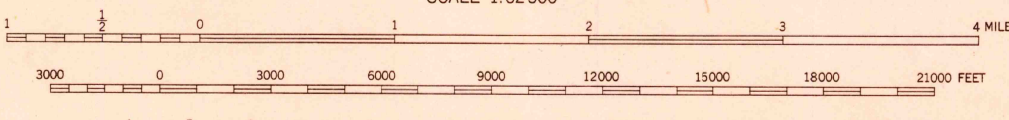
Mapped by the Geological Survey
1942-1943
Only landmark buildings shown
in the city of Shreveport

ROAD CLASSIFICATION
1947
Dependable hard surface
heavy-duty road
Secondary hard surface
all weather road
More than two lanes indicated along road with tick at point of change

ROAD CLASSIFICATION
1947
Dry weather roads
Loose surface graded
Unsurfaced, graded
Dirt road
State Route

TRUE NORTH
MAGNETIC NORTH

APPROXIMATE MEAN
DECLINATION, 1948



Contour interval 20 feet
Datum is mean sea level

USGS
Historical File
Topographic Division

U. S. G. S.
FILE COPY
Inspection and Editing.

Polyconic projection. 1927 North American datum
10000 foot grid based on Louisiana (North)
rectangular coordinate system.

GREENWOOD 14 MI. (80) (79) (171)
MARSHALL 40 MI. (80) (79) (171)
KEITHVILLE 13 MI. (80) (79) (171)
MANSFIELD 37 MI. (80) (79) (171)

MOORINGSPOINT, LA.
Edition of 1948

N 3230-W 9345/15

MAY 26 1948

2150