

SHREVEPORT 43 MI.  
MANSFIELD (JUNC. U.S. 171) 3.5 MI.

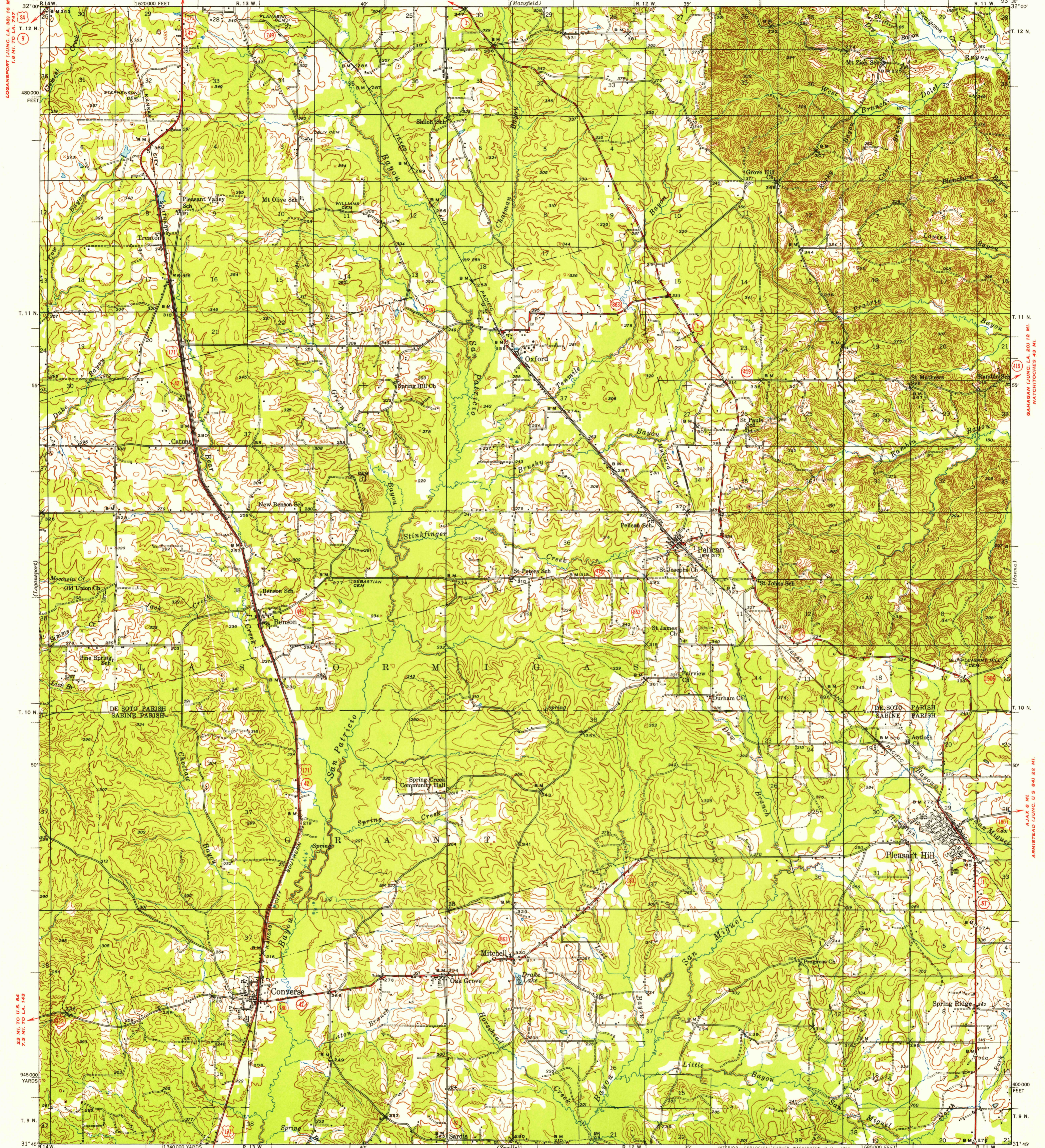
SHREVEPORT 42 MI.  
MANSFIELD 2.5 MI.

STATE OF LOUISIANA  
DEPARTMENT OF PUBLIC WORKS  
BATON ROUGE

UNITED STATES  
DEPARTMENT OF THE ARMY  
CORPS OF ENGINEERS

U.S.G.S.  
FILE COPY  
TOPOGRAPHIC DIVISION

LOUISIANA  
PLEASANT HILL QUADRANGLE  
15-MINUTE SERIES



LOGANSPORT (JUNC. LA. 89) 16 MI.  
T. 12 N.  
T. 11 N.  
T. 10 N.  
T. 9 N.  
93° 45' W.  
93° 30' W.  
93° 15' W.  
93° 00' W.

(Cahoon)  
NATCHITOCHEE 43 MI.  
ARMISTEAD (JUNC. U.S. 84) 22 MI.  
AJAX 8 MI.  
T. 12 N.  
T. 11 N.  
T. 10 N.  
T. 9 N.  
93° 30' W.  
93° 15' W.  
93° 00' W.

Mapped by the Geological Survey  
1942-1943

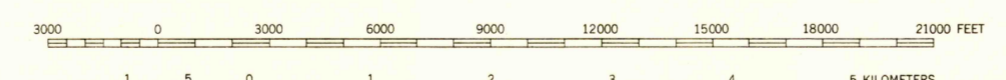
NOBLE 5.3 MI.  
DE RIDDER (JUNC. U.S. 190) 77 MI.

NOBLE (JUNC. U.S. 171) 4.7 MI.  
MANY 21 MI.

SCALE 1:62500

INTERIOR—GEOLOGICAL SURVEY, WASHINGTON, D. C.—1955  
M. R. 6325

Polyconic projection. 1927 North American datum  
5000 yard grid based on U. S. zone system, D  
10000 foot grid based on Louisiana (North)  
rectangular coordinate system



TRUE NORTH  
MAGNETIC NORTH  
APPROXIMATE MEAN  
DECLINATION, 1948

Contour interval 20 feet  
Datum is mean sea level

FOR SALE BY U. S. GEOLOGICAL SURVEY, FEDERAL CENTER, DENVER, COLORADO OR WASHINGTON 25, D. C.  
A FOLDER DESCRIBING TOPOGRAPHIC MAPS AND SYMBOLS IS AVAILABLE ON REQUEST

USGS  
Historical File  
Topographic Division

ROAD CLASSIFICATION  
Heavy-duty — 4 LANE 16 LANE Light-duty —  
Medium-duty — 4 LANE 10 LANE Unimproved dirt —  
U. S. Route State Route

PLEASANT HILL, LA.

U.S.G.S. 3145—W9330/15  
1943  
FILE COPY  
TOPOGRAPHIC DIVISION

APR 15 1956  
3190