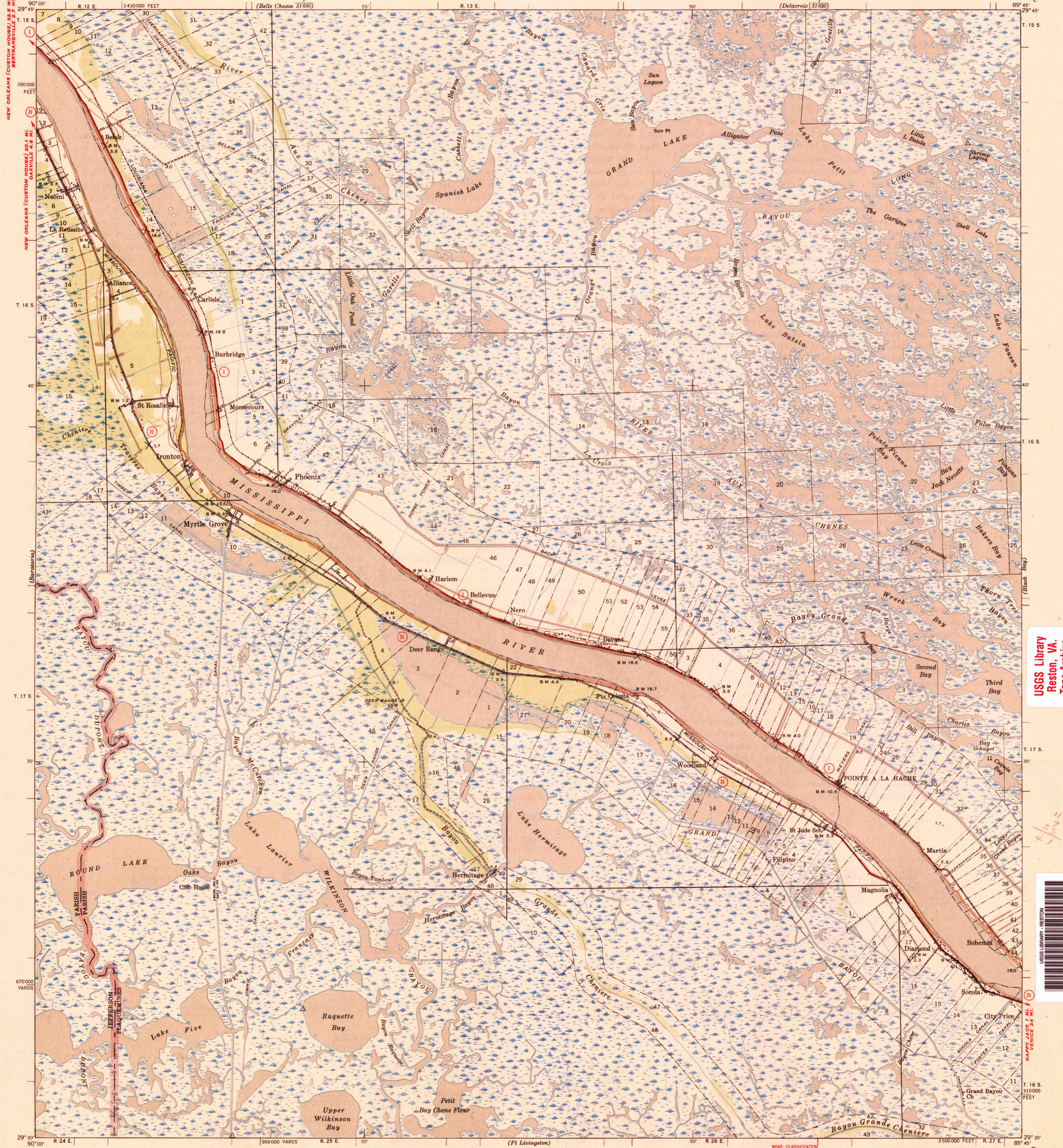


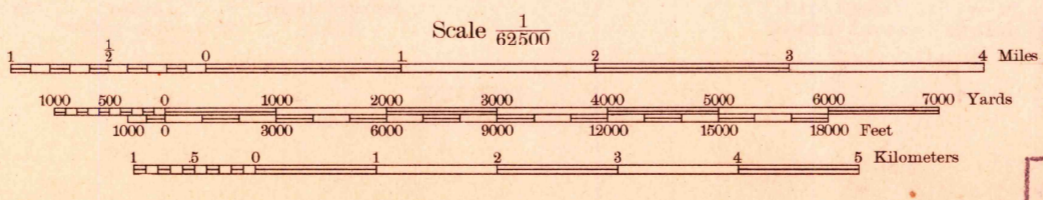
UNITED STATES
DEPARTMENT OF THE INTERIOR
GEOLOGICAL SURVEY

LOUISIANA
POINTE A LA HACHE QUADRANGLE
15-MINUTE SERIES



Topography by B. E. Adams, H. W. Toy, and F. W. Weber
Surveyed in 1939
Base compiled in cooperation with the State of Louisiana

APPROXIMATE MEAN
MAGNETIC
DECLINATION, 1939



ROAD CLASSIFICATION
1944
Dependable hard-surface heavy-duty road
Loose-surface, graded
Unsurfaced, graded
Secondary hard-surface all-weather road
Dirt road
U. S. Route
State Route
Land lines added from General Land Office records adjusted to natural features and control
Land lines pertaining to Twp 17 and 18 S., R. 24 E. are omitted because land plats and topography can not be reconciled.

USGS
Historical File
Topographic Division
U. S. G. S.
FILE COPY
Inspection and Editing.

POINTE A LA HACHE, LA.
Edition of 1944
N 2930-W 8945/15

JUL 10 1944

4070

USGS Library
Reston, VA.
Topo Archive

USGS LIBRARY, RESTON
3 1818 00503880 5