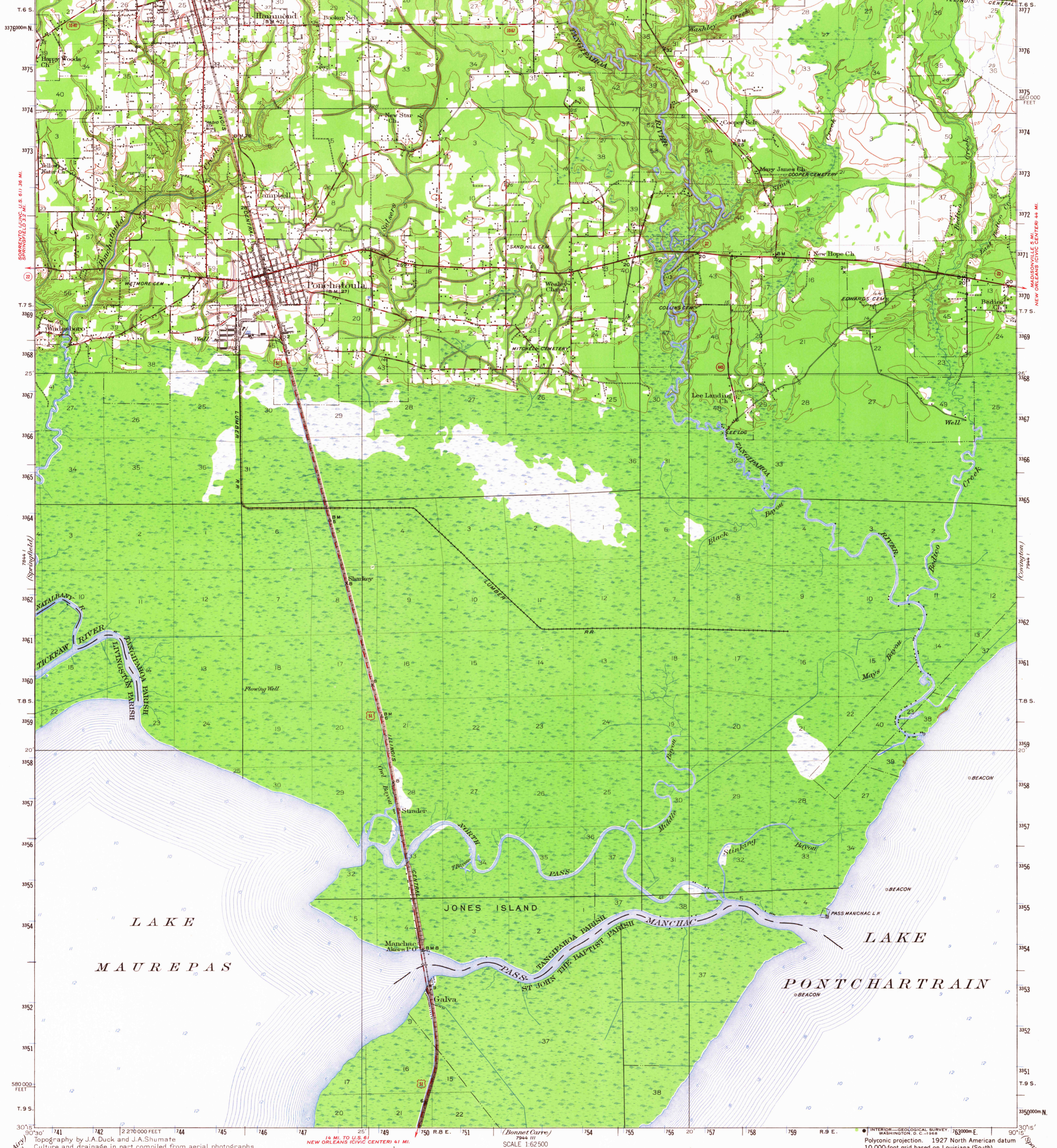


UNITED STATES  
DEPARTMENT OF THE INTERIOR  
GEOLOGICAL SURVEY

UNITED STATES  
DEPARTMENT OF THE ARMY  
CORPS OF ENGINEERS

LOUISIANA  
PONCHATOULA QUADRANGLE



Topography by J.A. Duck and J.A. Shumate  
Culture and drainage in part compiled from aerial photographs  
taken by Air Corps, U.S. Army  
Control by U.S. Geological Survey and  
U.S. Coast and Geodetic Survey  
Surveyed in 1932  
Revised in 1951

**ROAD CLASSIFICATION**

Heavy-duty ——— Light-duty ———  
Medium-duty ——— Unimproved dirt - - - - -

U.S. Route      State Route

UTM GRID AND 1983 MAGNETIC NORTH  
DECLINATION AT CENTER OF SHEET

6 1/2' 116 MILS  
11° 20' 24 MILS

SCALE 1:62,500

0 3000 6000 9000 12000 15000 18000 21000 FEET

0 1 2 3 4 5 KILOMETERS

CONTOUR INTERVAL 5 FEET  
DATUM IS MEAN SEA LEVEL  
DEPTH SOUNDINGS IN FEET

FOR SALE BY U.S. GEOLOGICAL SURVEY, DENVER, COLORADO 80225 OR WASHINGTON, D.C. 20242  
AND BY THE STATE OF LOUISIANA, DEPARTMENT OF PUBLIC WORKS, BATON ROUGE, LOUISIANA 70804  
A FOLDER DESCRIBING TOPOGRAPHIC MAPS AND SYMBOLS IS AVAILABLE ON REQUEST

U.S.G.S.  
**FILE COPY**  
TOPOGRAPHIC DIVISION

USGS  
Historical File  
Topographic Division

PONCHATOULA, LA.  
N3015—W9015/15  
1951  
AMS 7944 IV—SERIES V785

4855  
APR 1 1968