

(HODGE)

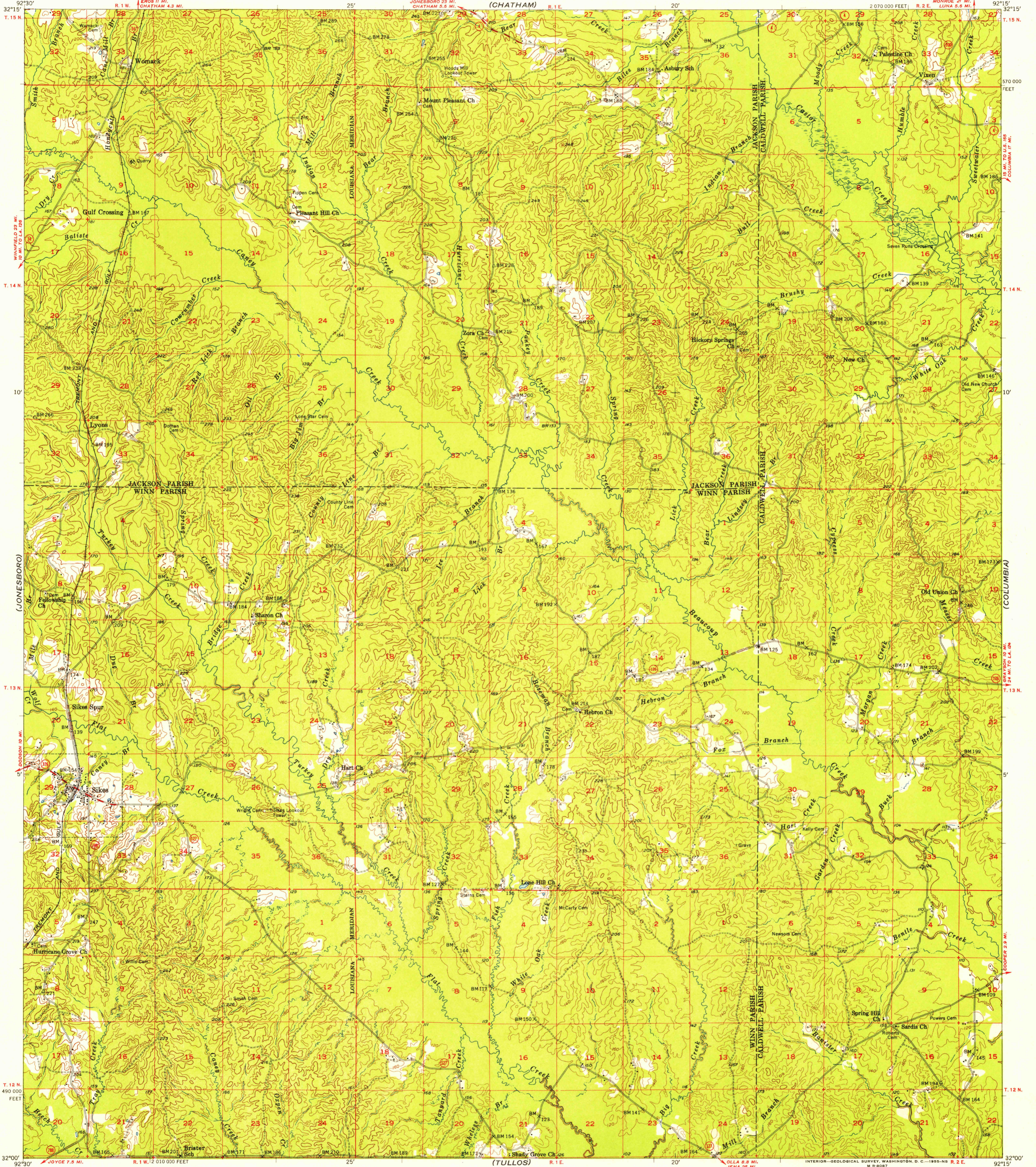
UNITED STATES
DEPARTMENT OF THE INTERIOR
GEOLOGICAL SURVEY

STATE OF LOUISIANA
DEPARTMENT OF PUBLIC WORKS
BATON ROUGE
(CHATHAM)

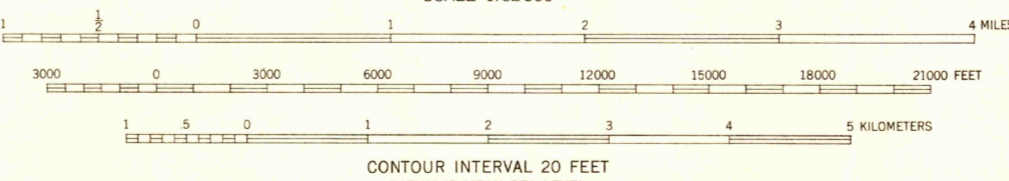
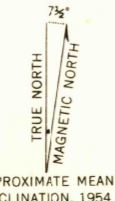
U.S.G.S.
FILE COPY
TOPOGRAPHIC DIVISION

SIKES QUADRANGLE
LOUISIANA
15 MINUTE SERIES (TOPOGRAPHIC)
2 070 000 FEET

(MONROE)



Mapped, edited, and published by the Geological Survey
Control by USGS, USC&GS, and Louisiana Geodetic Survey
Culture and drainage in part compiled from aerial photographs
taken 1940-1941, 1947 and 1950-1952. Topography by
plane-table surveys 1953-1954
Polyconic projection, 1927 North American datum
10,000-foot grid based on Louisiana coordinate system,
north zone



USGS
Historical File
Topographic Division

ROAD CLASSIFICATION

Heavy-duty	Light-duty
Medium-duty	Unimproved dirt
U.S. Route	State Route

QUADRANGLE LOCATION

THIS MAP COMPLIES WITH NATIONAL MAP ACCURACY STANDARDS
FOR SALE BY U. S. GEOLOGICAL SURVEY, FEDERAL CENTER, DENVER, COLORADO OR WASHINGTON 25, D. C.
AND BY THE STATE OF LOUISIANA, DEPARTMENT OF PUBLIC WORKS, BATON ROUGE 4, LOUISIANA
A FOLDER DESCRIBING TOPOGRAPHIC MAPS AND SYMBOLS IS AVAILABLE ON REQUEST

U.S.G.S.
FILE COPY
TOPOGRAPHIC DIVISION

SIKES, LA.
N3200-W9215/15
1954
NOV 25 1955