

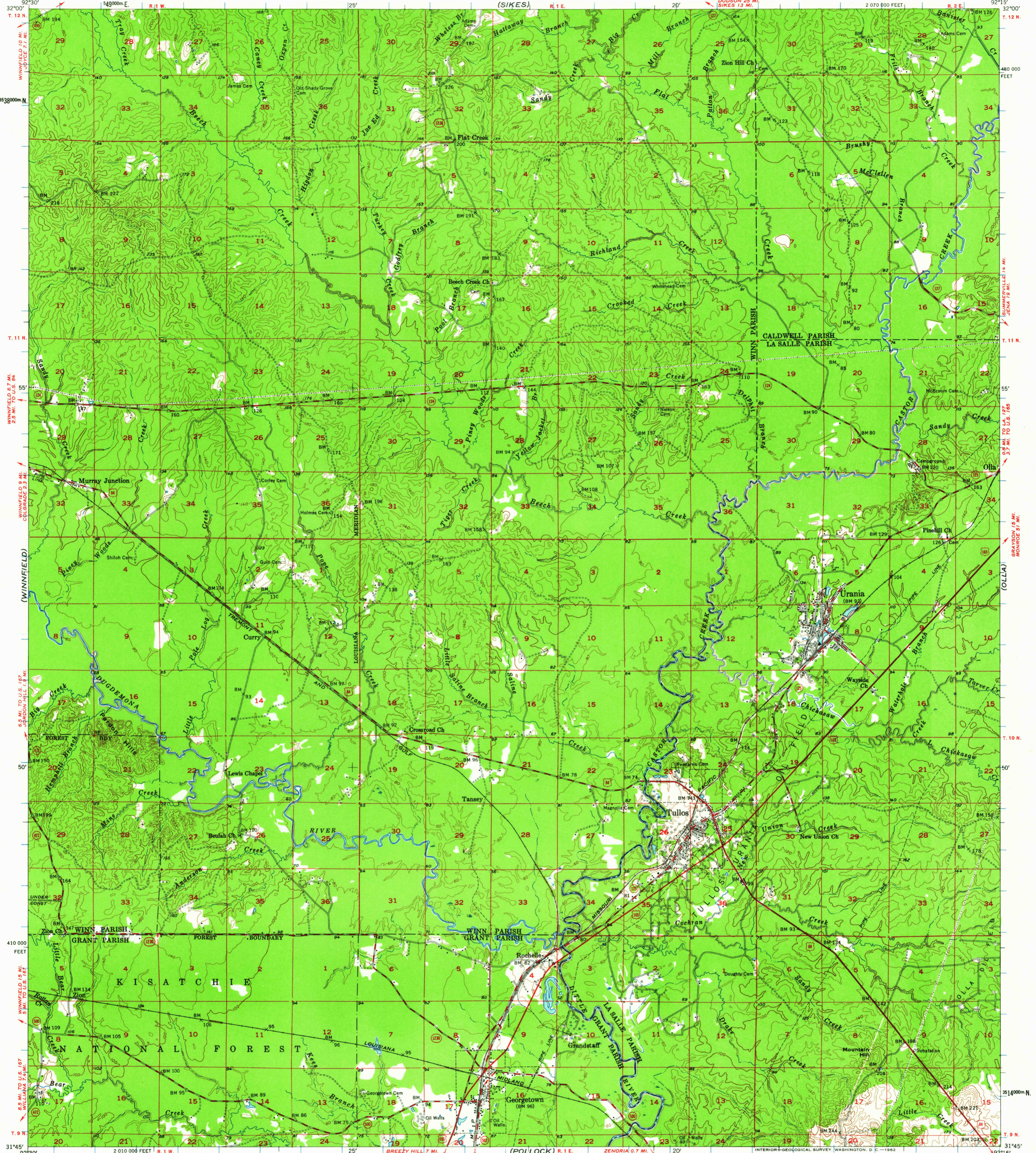
(JONESBORO)

(COLUMBIA)

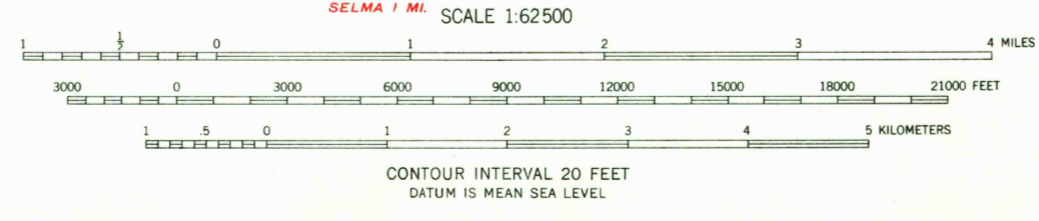
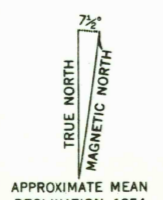
UNITED STATES
DEPARTMENT OF THE INTERIOR
GEOLOGICAL SURVEY

STATE OF LOUISIANA
DEPARTMENT OF PUBLIC WORKS
BATON ROUGE

TULLOS QUADRANGLE
LOUISIANA
15 MINUTE SERIES (TOPOGRAPHIC)



Maped, edited, and published by the Geological Survey
Control by USGS, USC&GS, USCE, and Louisiana Geodetic Survey
Culture and drainage in part compiled from aerial photographs
taken 1947, and 1950-1952. Topography by plane-table surveys 1953-1954
Polyconic projection. 1927 North American datum
10,000-foot grid based on Louisiana coordinate system,
north zone
1000-meter Universal Transverse Mercator grid ticks,
zone 15, shown in blue



USGS
Historical File
Topographic Division

ROAD CLASSIFICATION

| | |
|-------------|-----------------|
| Heavy-duty | Light-duty |
| Medium-duty | Unimproved dirt |
| U. S. Route | State Route |



THIS MAP COMPLIES WITH NATIONAL MAP ACCURACY STANDARDS
FOR SALE BY U. S. GEOLOGICAL SURVEY, DENVER 25, COLORADO OR WASHINGTON 25, D. C.
AND BY THE STATE OF LOUISIANA, DEPARTMENT OF PUBLIC WORKS, BATON ROUGE 4, LOUISIANA
A FOLDER DESCRIBING TOPOGRAPHIC MAPS AND SYMBOLS IS AVAILABLE ON REQUEST

TULLOS, LA.
N3145-W9215/15
1954

3615