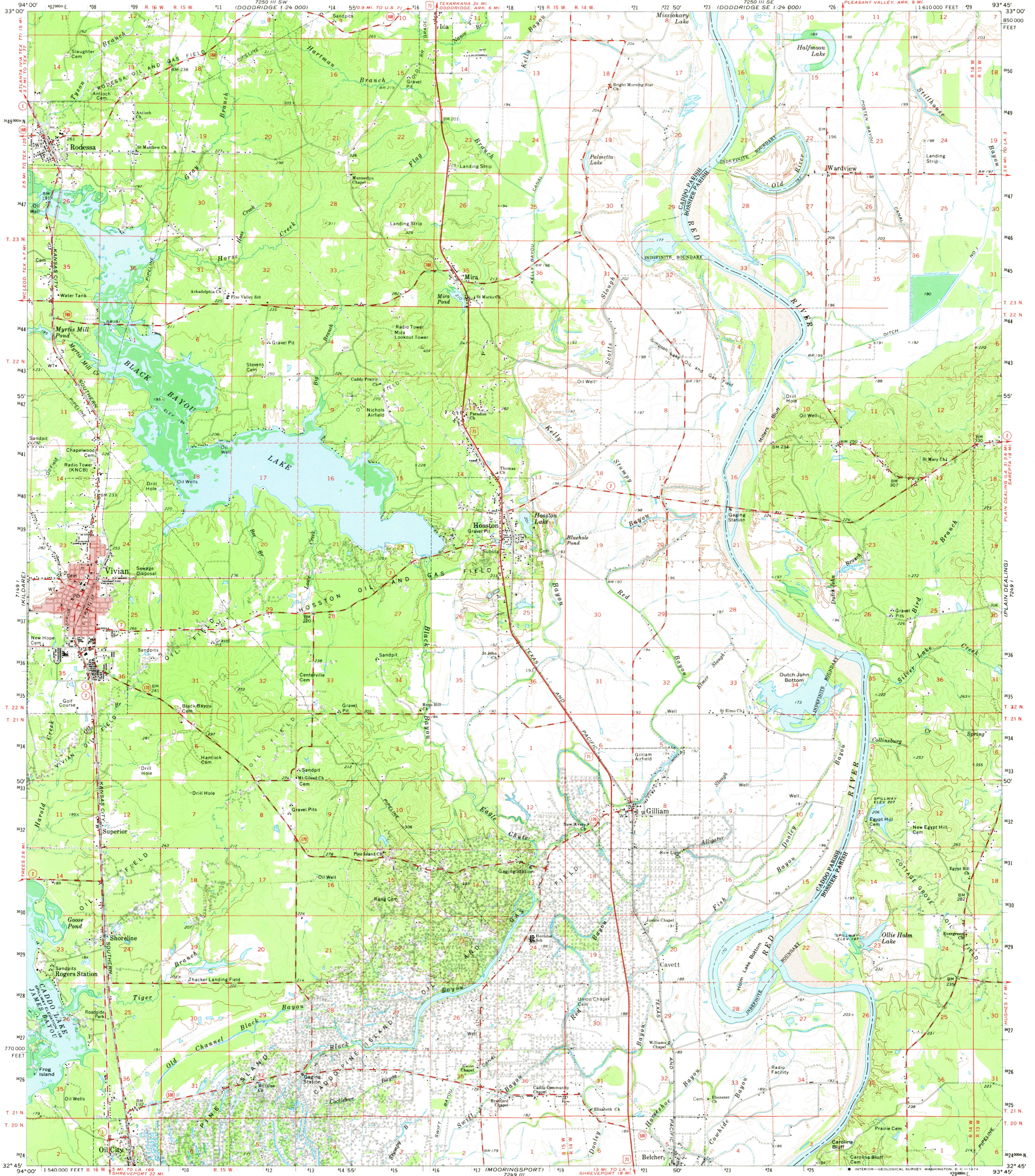
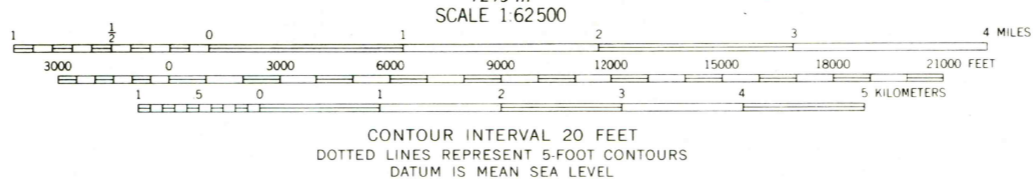


UNITED STATES  
DEPARTMENT OF THE INTERIOR  
GEOLOGICAL SURVEY

VIVIAN QUADRANGLE  
LOUISIANA  
15 MINUTE SERIES (TOPOGRAPHIC)



Mapped, edited, and published by the Geological Survey  
Control by USGS and USC&GS  
Compiled in 1973 from 1:24 000-scale maps dated 1971  
Supersedes map dated 1956  
Projection and 10,000-foot grid ticks: Louisiana coordinate system, north zone (Lambert conformal conic)  
1000-meter Universal Transverse Mercator grid ticks, zone 15, shown in blue. 1927 North American datum  
Red tint indicates area in which only landmark buildings are shown



ROAD CLASSIFICATION  
Primary highway, hard surface  
Secondary highway, hard surface  
Light-duty road, hard or improved surface  
Unimproved road  
Interstate Route  
U.S. Route  
State Route  
This area also covered by 7.5 minute, 1:24 000-scale maps: Wardview 1971, Vivian North 1971, Vivian South 1971, and Gilliam 1971

THIS MAP COMPLIES WITH NATIONAL MAP ACCURACY STANDARDS  
FOR SALE BY U.S. GEOLOGICAL SURVEY, DENVER, COLORADO 80225, OR WASHINGTON, D.C. 20542  
AND BY THE STATE OF LOUISIANA, DEPARTMENT OF PUBLIC WORKS, BATON ROUGE, LOUISIANA 70804  
A FOLDER DESCRIBING TOPOGRAPHIC MAPS AND SYMBOLS IS AVAILABLE ON REQUEST

VIVIAN, LA.  
N3245-W9345/15  
1971  
AMS 7249 IV—SERIES V785

JAN 11 1974

3090