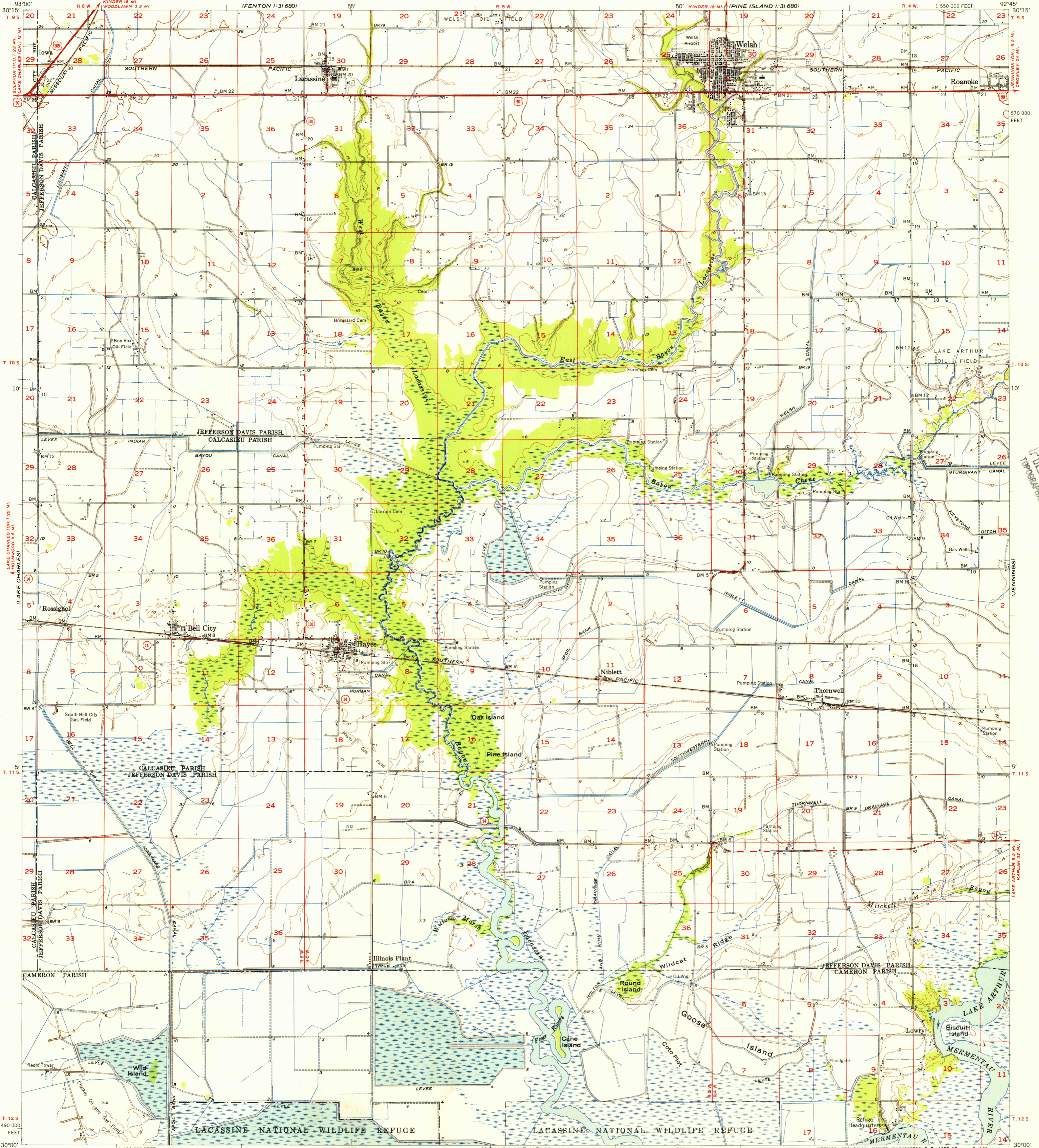


UNITED STATES  
DEPARTMENT OF THE INTERIOR  
GEOLOGICAL SURVEY

WELSH QUADRANGLE  
LOUISIANA  
15 MINUTE SERIES (TOPOGRAPHIC)

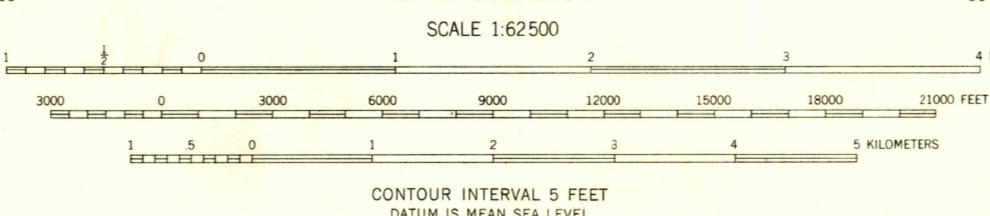
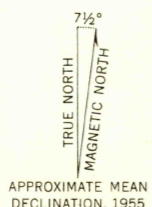


Mapped, edited, and published by the Geological Survey

Control by USGS, USC&GS, and Louisiana Geodetic Survey  
Culture and drainage in part compiled from aerial photographs taken 1951. Topography by planetable surveys 1955

Polyconic projection. 1927 North American datum  
10,000-foot grid based on Louisiana coordinate system, south zone

Dashed land lines indicate approximate locations  
Certain land lines unsurveyed in T. 11 S.-R. 5 W.,  
T. 12 S.-R. 4 W., T. 12 S.-R. 5 W., and T. 12 S.-R. 6 W.



CONTOUR INTERVAL 5 FEET  
DATUM IS MEAN SEA LEVEL

THIS MAP COMPLIES WITH NATIONAL MAP ACCURACY STANDARDS  
FOR SALE BY U.S. GEOLOGICAL SURVEY, FEDERAL CENTER, DENVER, COLORADO OR WASHINGTON 25, D.C.  
AND BY THE STATE OF LOUISIANA, DEPARTMENT OF PUBLIC WORKS, BATON ROUGE 4, LOUISIANA  
A FOLDER DESCRIBING TOPOGRAPHIC MAPS AND SYMBOLS IS AVAILABLE ON REQUEST

USGS  
Historical File  
Topographic Division



ROAD CLASSIFICATION  
Heavy-duty ——— Light-duty ———  
Medium-duty ——— Unimproved dirt ———  
U. S. Route ——— State Route ———

U.S.G.S.  
FILE COPY  
TOPOGRAPHIC DIVISION

WELSH, LA.  
N3000-W9245/15  
1955

NOV 2 1956  
2620

U.S.G.S.  
FILE COPY  
TOPOGRAPHIC DIVISION