

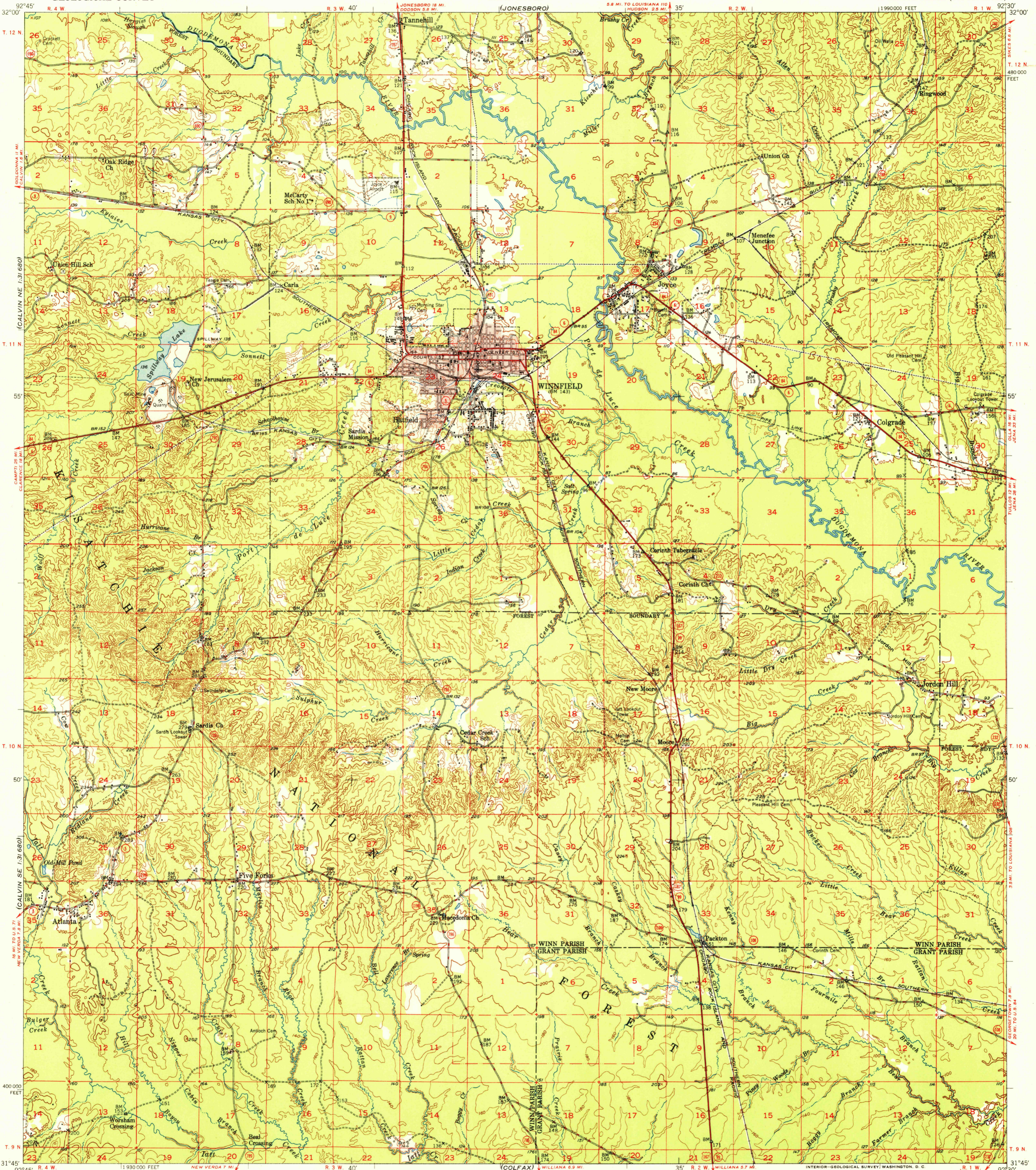
(GOLDONNA)

UNITED STATES  
DEPARTMENT OF THE INTERIOR  
GEOLOGICAL SURVEY

U. S. G. S.  
FILE COPY  
Inspection and Rating

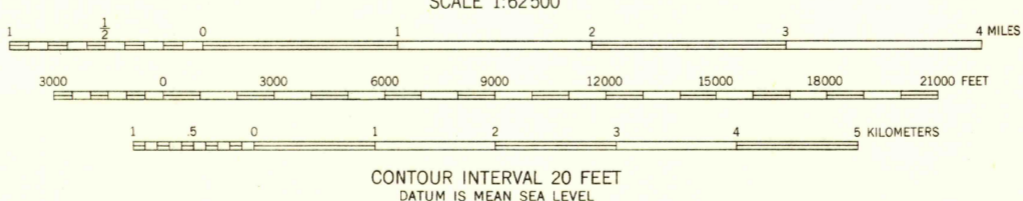
STATE OF LOUISIANA  
DEPARTMENT OF PUBLIC WORKS  
BATON ROUGE  
(JONESBORO)

WINNFIELD QUADRANGLE  
LOUISIANA  
15 MINUTE SERIES (TOPOGRAPHIC)



Mapped, edited, and published by the Geological Survey  
Control by Louisiana Geodetic Survey,  
USGS and USC&GS  
Culture and drainage in part compiled from  
aerial photographs taken 1947  
Topography by plane-table methods 1950  
Polyconic projection. 1927 North American datum  
10,000-foot grid based on Louisiana coordinate system  
north zone  
Red tint indicates area in which only  
landmark buildings are shown

APPROXIMATE MEAN  
DECLINATION, 1950



CONTOUR INTERVAL 20 FEET  
DATUM IS MEAN SEA LEVEL

THIS MAP COMPLIES WITH NATIONAL MAP ACCURACY STANDARDS  
FOR SALE BY U. S. GEOLOGICAL SURVEY, FEDERAL CENTER, DENVER, COLORADO OR WASHINGTON 25, D. C.  
AND BY THE STATE OF LOUISIANA, DEPARTMENT OF PUBLIC WORKS, BATON ROUGE 4, LOUISIANA  
A FOLDER DESCRIBING TOPOGRAPHIC MAPS AND SYMBOLS IS AVAILABLE ON REQUEST

USGS  
Historical File  
Topographic Division

U. S. G. S.  
FILE COPY  
Inspection and Rating

ROAD CLASSIFICATION  
HEAVY-DUTY ALL WEATHER ROADS DRY WEATHER ROADS  
Medium-duty LANE LANE Improved dirt  
Loose-surface, graded, or narrow hard-surface  
U. S. Route State Route

WINNFIELD, LA.  
N3145-W9230/15

EDITION OF 1951

APR 12 1951

2065