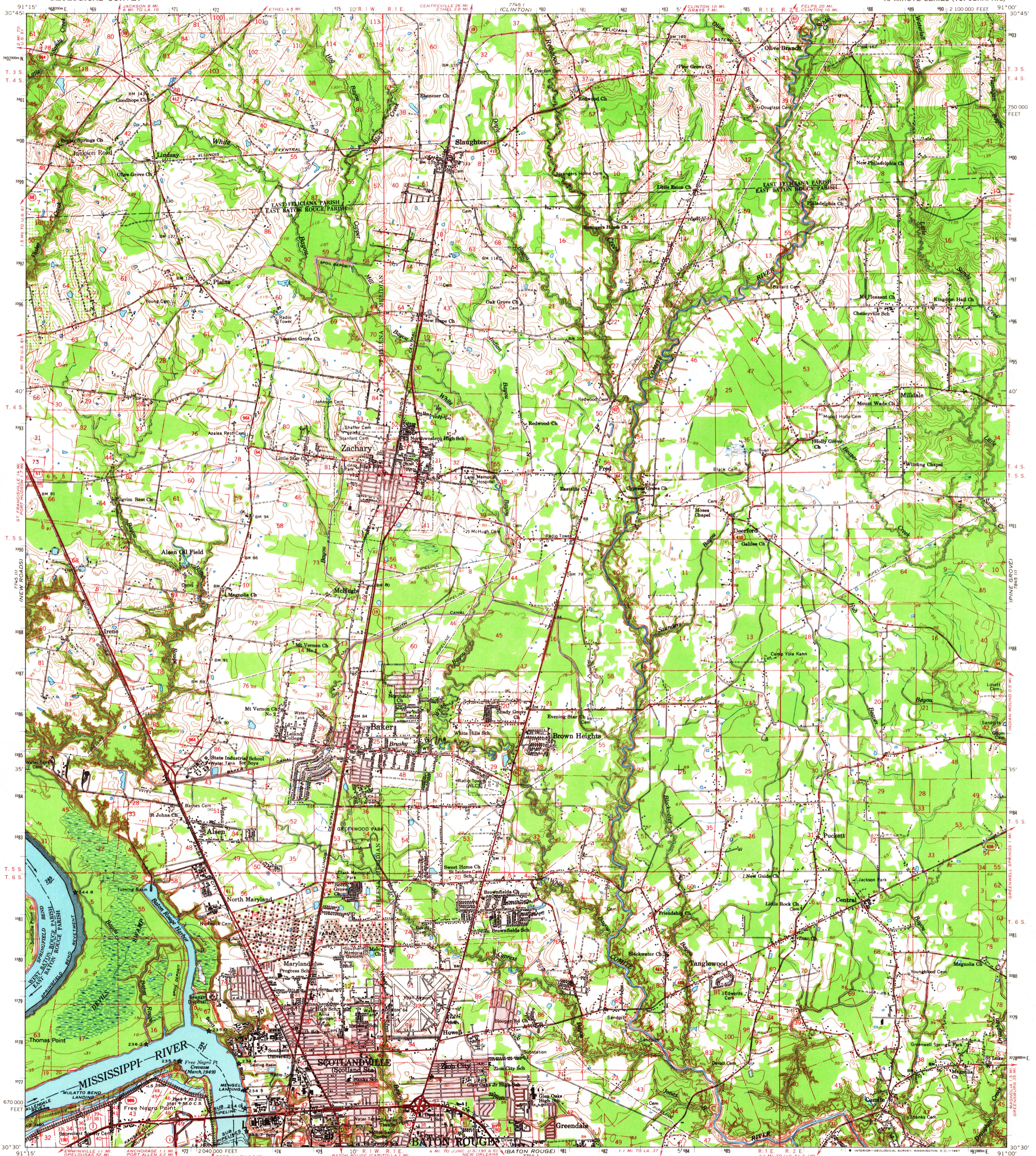


UNITED STATES  
DEPARTMENT OF THE INTERIOR  
GEOLOGICAL SURVEY

ZACHARY QUADRANGLE  
LOUISIANA  
15 MINUTE SERIES (TOPOGRAPHIC)



Prepared by the Mississippi River Commission  
Published by the Geological Survey

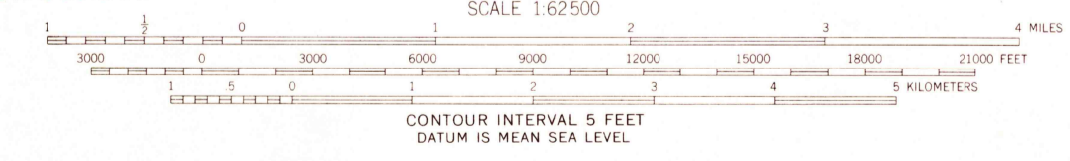
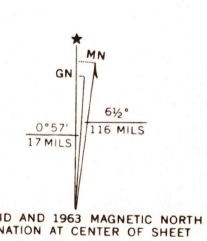
Control by USGS, USC&GS and Louisiana Geodetic Survey  
Compiled in 1964 from 1:24,000-scale, USGS maps dated 1963

Polyconic projection. 1927 North American datum  
10,000-foot grid based on Louisiana coordinate system,  
south zone  
1300-meter Universal Transverse Mercator grid ticks,  
zone 15, shown in blue

Red tint indicates areas in which only landmarks  
buildings are shown

No distinction is made between dwellings, bars, commercial,  
and industrial buildings

Distances on Mississippi River, above Head of Passes,  
are shown at 5 mile intervals



ROAD CLASSIFICATION

Heavy-duty	Light-duty
Medium-duty	Unimproved dirt
U. S. Route	State Route

THIS MAP COMPLIES WITH NATIONAL MAP ACCURACY STANDARDS  
FOR SALE BY U. S. GEOLOGICAL SURVEY, DENVER, COLORADO 80225, OR WASHINGTON, D. C. 20242,  
STATE OF LOUISIANA, DEPARTMENT OF PUBLIC WORKS, BATON ROUGE, LOUISIANA 70804,  
AND MISSISSIPPI RIVER COMMISSION, VICKSBURG, MISSISSIPPI 39181  
A FOLDER DESCRIBING TOPOGRAPHIC MAPS AND SYMBOLS IS AVAILABLE ON REQUEST



USGS  
Historical File  
Topographic Division

ZACHARY, LA.  
N3030-W9100/15  
1963  
AMS 7745 II-SERIES V785

TOPOGRAPHIC DIVISION

2255  
1937