

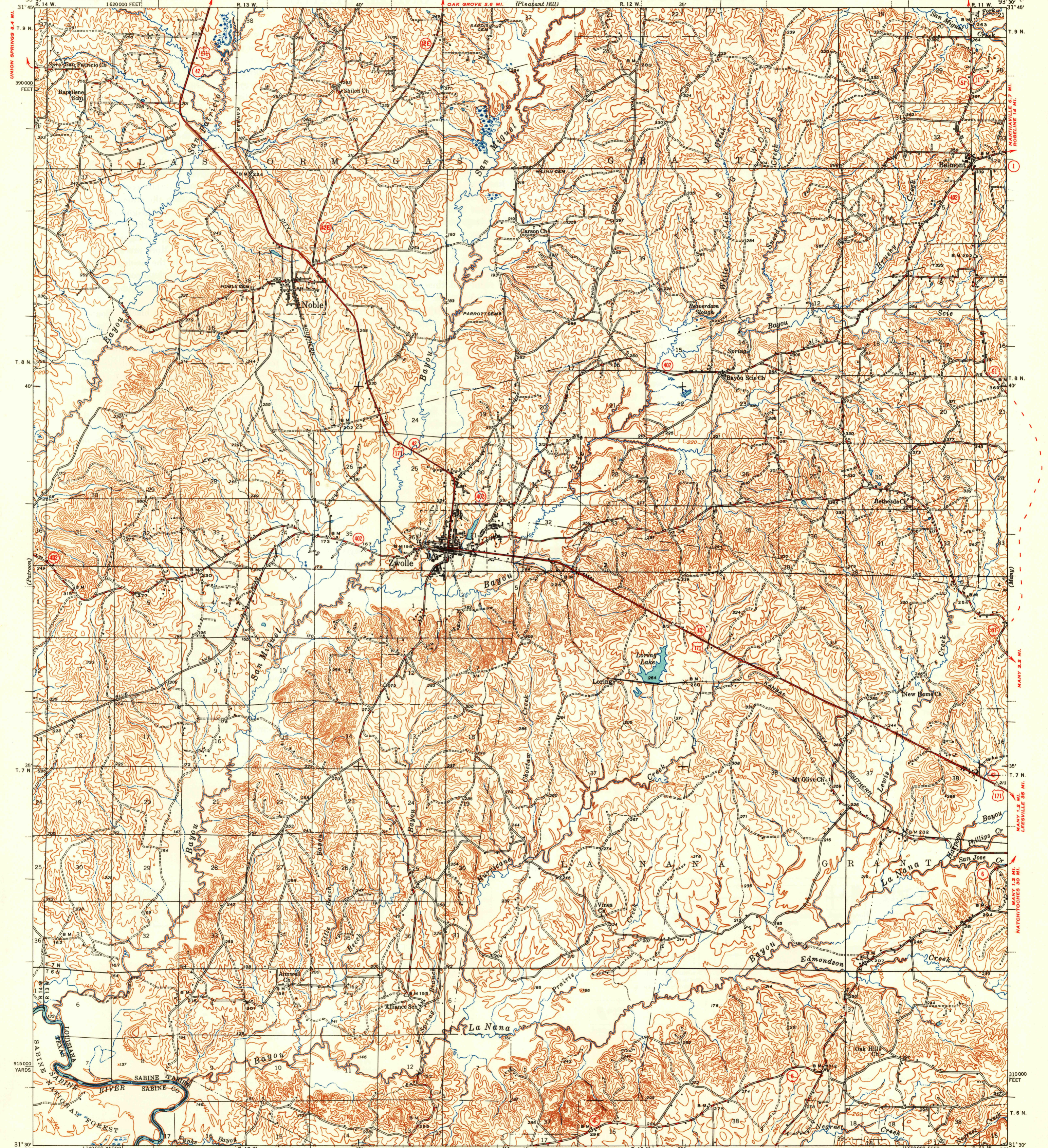
U. S. G. S.
FILE COPY
Inspection and Editing.

UNITED STATES
DEPARTMENT OF THE INTERIOR
GEOLOGICAL SURVEY

STATE OF LOUISIANA
DEPARTMENT OF PUBLIC WORKS
BATON ROUGE

DEPARTMENT OF THE ARMY
CORPS OF ENGINEERS

LOUISIANA - TEXAS
ZWOLLE QUADRANGLE
15-MINUTE SERIES



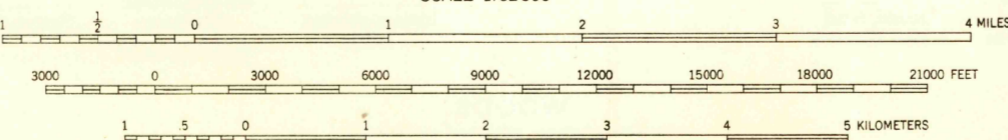
Topography by E. J. Fennell, J. B. Leachman,
C. A. Killian, J. M. Stricklin, and J. E. Shelden
Surveyed in 1942-1943

SCALE 1:62,500

Polyconic projection. 1927 North American datum
5000 yard grid based on U. S. zone system, D
10000 foot grid based on Louisiana (North)
rectangular coordinate system

ROAD CLASSIFICATION
HARD-SURFACE ALL WEATHER ROADS DRY WEATHER ROADS
Heavy-duty ——— 4 LANE LANE Improved dirt
Medium-duty ——— 4 LANE LANE Unimproved dirt
Loose-surfaces, graded, or narrow hard-surface - - -
U. S. Route State Route

TRUE NORTH
MAGNETIC NORTH
APPROXIMATE MEAN
DECLINATION, 1948



Contour interval 20 feet
Datum is mean sea level

USGS
Historical Photo
Topographic Division
U. S. G. S.
FILE COPY
Inspection and Editing.

ZWOLLE, LA.-TEX.
Edition of 1944
reprinted 1949
N3130-W9330/15