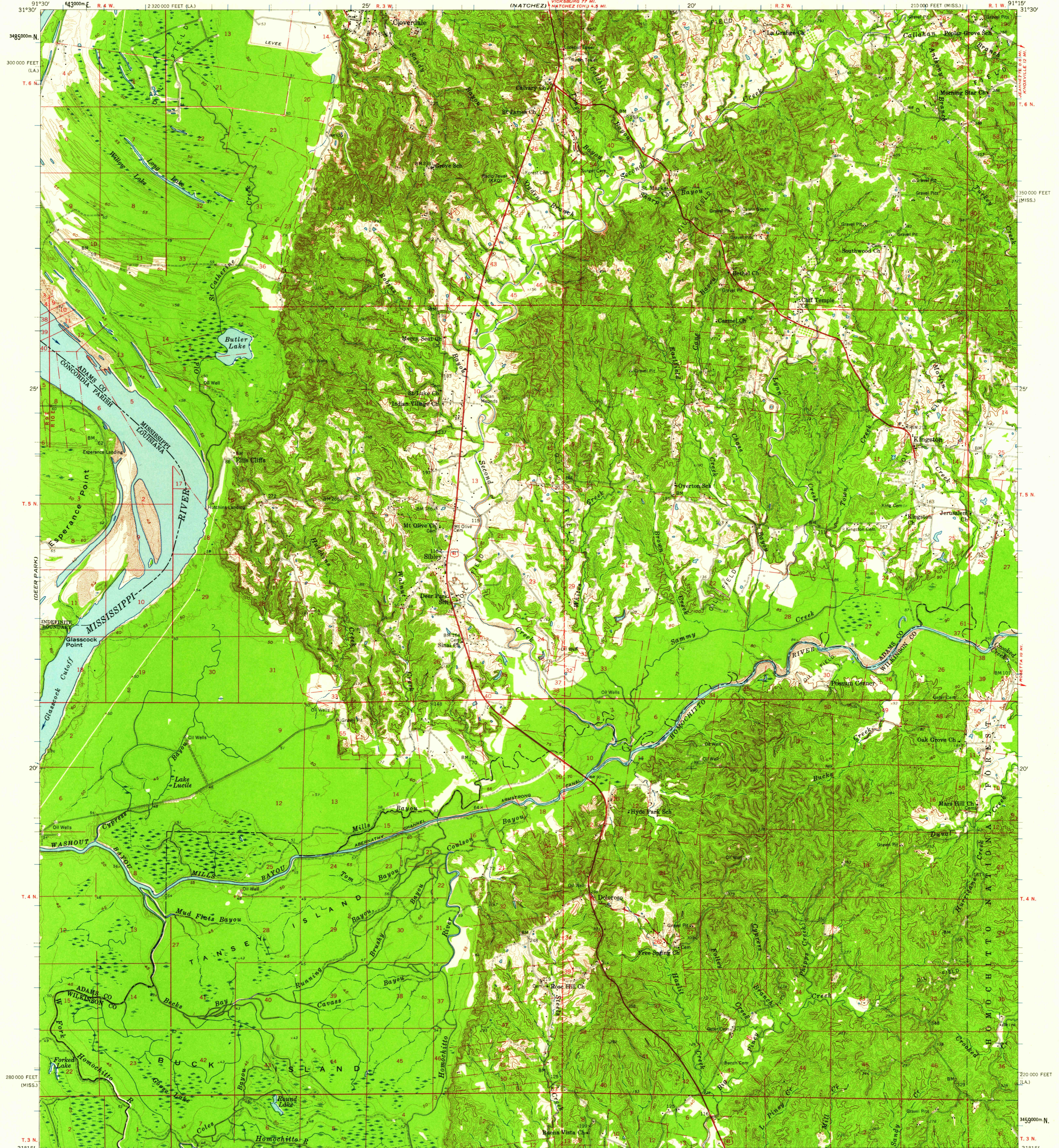


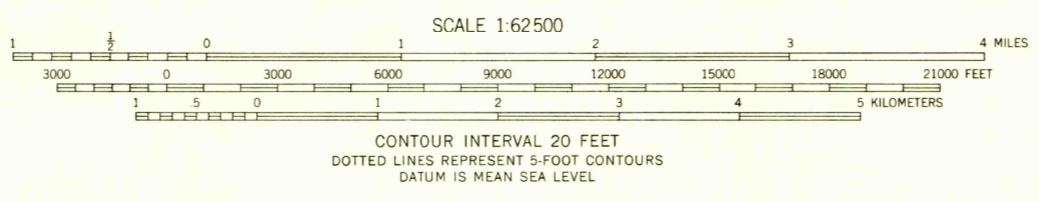
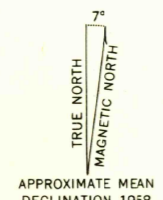
(RED GUM)

UNITED STATES
DEPARTMENT OF THE INTERIOR
GEOLOGICAL SURVEY

KINGSTON QUADRANGLE
MISSISSIPPI-LOUISIANA
15 MINUTE SERIES (TOPOGRAPHIC)



Mapped, edited, and published by the Geological Survey
Control by USGS, USC&GS, and USCE
Topography from aerial photographs by photogrammetric methods
and by planetable surveys 1958. Aerial photographs taken 1957
Polyconic projection. 1927 North American datum
10,000-foot grids based on Mississippi coordinate system,
west zone, and Louisiana coordinate system, north zone
1000-meter Universal Transverse Mercator grid ticks,
zone 15, shown in blue
Dashed land lines indicate approximate locations



USGS
Historical File
Topographic Division

ROAD CLASSIFICATION

Heavy-duty	Light-duty
Medium-duty	Unimproved dirt

U.S. Route



THIS MAP COMPLIES WITH NATIONAL MAP ACCURACY STANDARDS
FOR SALE BY U. S. GEOLOGICAL SURVEY, DENVER 25, COLORADO OR WASHINGTON 25, D. C.
AND BY THE STATE OF LOUISIANA, DEPARTMENT OF PUBLIC WORKS, BATON ROUGE 4, LOUISIANA
A FOLDER DESCRIBING TOPOGRAPHIC MAPS AND SYMBOLS IS AVAILABLE ON REQUEST

U.S.G.S.
FILE COP
TOPOGRAPHIC DIVISION

KINGSTON, MISS.-LA.
N3115-W9115/15
1958

JUN 23 1961

6125