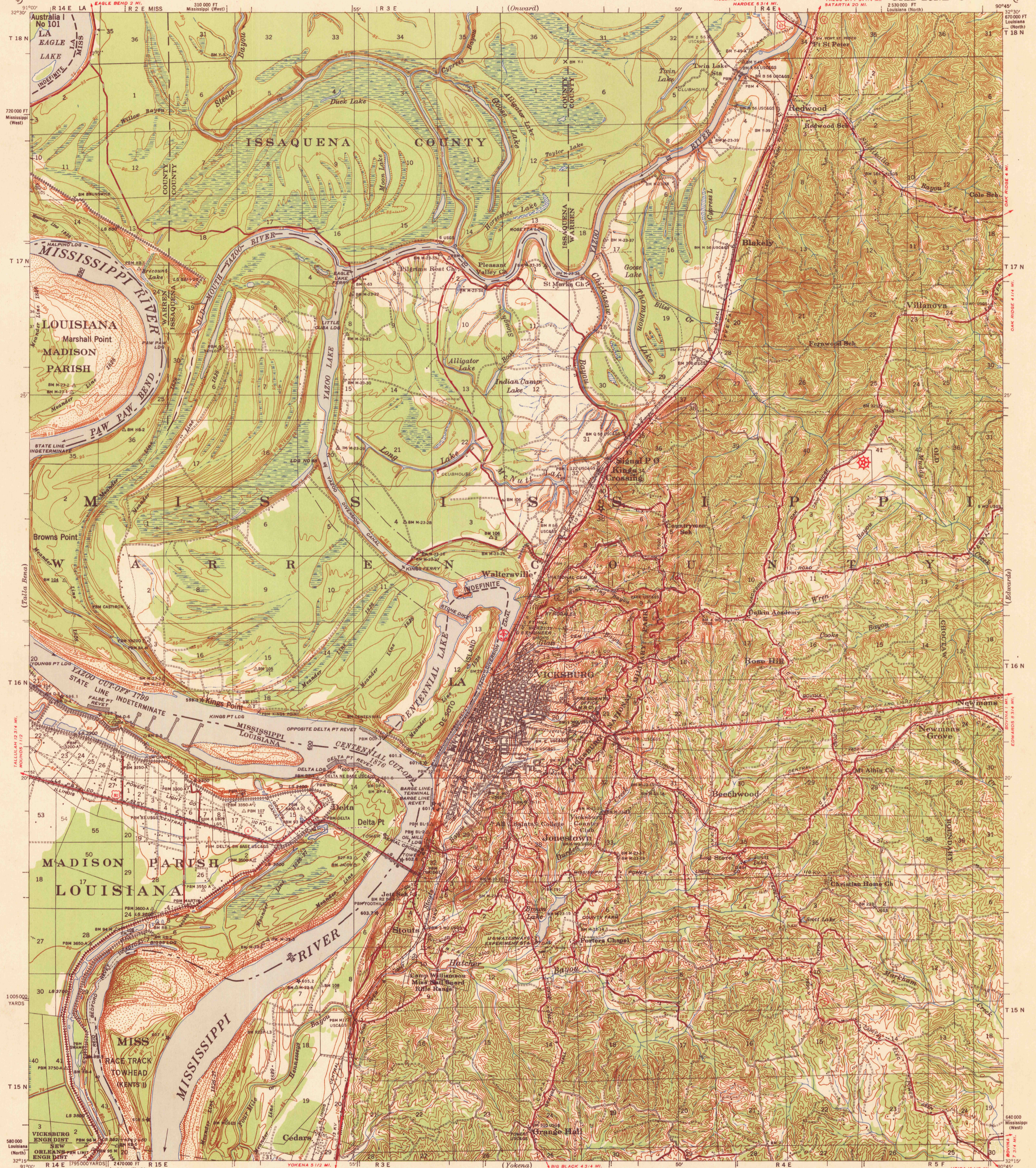


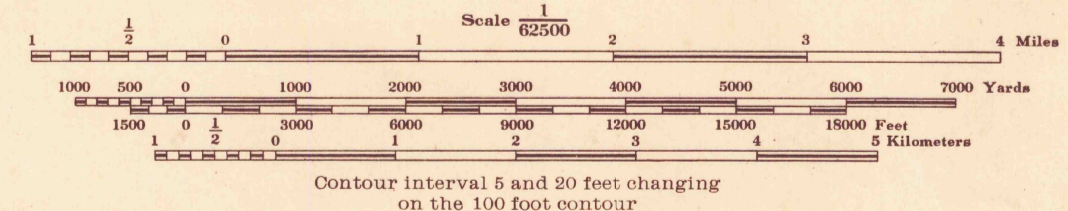
U. S. G. S. FILE COPY Inspection and Editing.

MISSISSIPPI-LOUISIANA VICKSBURG QUADRANGLE GRID ZONE "C"

WAR DEPARTMENT CORPS OF ENGINEERS



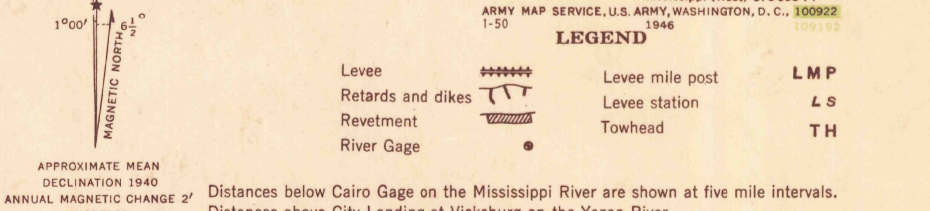
Prepared under the direction of the President, Mississippi River Commission. Horizontal control by Mississippi River Commission and Corps of Engineers, U. S. Army, Vicksburg District. Vertical control by Mississippi River Commission and Corps of Engineers, U. S. Army, Vicksburg District. Descriptions, elevations and geodetic positions of bench marks may be obtained from Vicksburg Engineer District, Vicksburg, Miss. Topography by Corps of Engineers, U. S. Army, Vicksburg District, 1930-42 and from Vicksburg quadrangle, U. S. G. S., 1909. Area outside Alluvial Valley taken from Vicksburg quadrangle, U. S. G. S., 1909, revised by Vicksburg Engineer District, 1937 and 1942. Revised by Mississippi River Commission, 1932, 1937, 1939 and 1941. Political boundaries are shown according to best available information, and are subject to change except where established by court decision. Work under Flood Control Act shown as of December 1941. Polyconic Projection, North American Datum.



Datum is mean gulf level at Biloxi, Mississippi. Elevations differ from mean sea level elevations as determined by the U. S. Coast and Geodetic Survey, by small fractions of a foot. Persons interested may secure elevations of bench marks as determined by the latest U. S. C. & G. S. adjustments by applying to the U. S. Coast and Geodetic Survey. FIVE THOUSAND YARD GRID COMPUTED FROM "GRID SYSTEM FOR PROGRESSIVE MAPS" IN THE U. S. G. S. & G. S. SPECIAL PUBLICATION NO. 28

THE STATE GRIDS ARE INDICATED FOR MISSISSIPPI ZONE WEST BY --- TICKS, FOR LOUISIANA ZONE NORTH BY --- TICKS OUTSIDE THE NEAT LINE AT 10,000 FOOT INTERVALS.

Additional copies may be procured from The President, Mississippi River Commission, Vicksburg, Miss. 20 Cents per Copy



Distances below Cairo Gage on the Mississippi River are shown at five mile intervals. Distances above City Landing at Vicksburg on the Yazoo River are shown at five mile intervals. Distances above mouth of Steel Bayou are shown at five mile intervals.

USGS Historical File & Division FILE COPY Inspection and Editing.

VICKSBURG, MISS.-LA. EDITION OF 1941 N3215-W9045/15