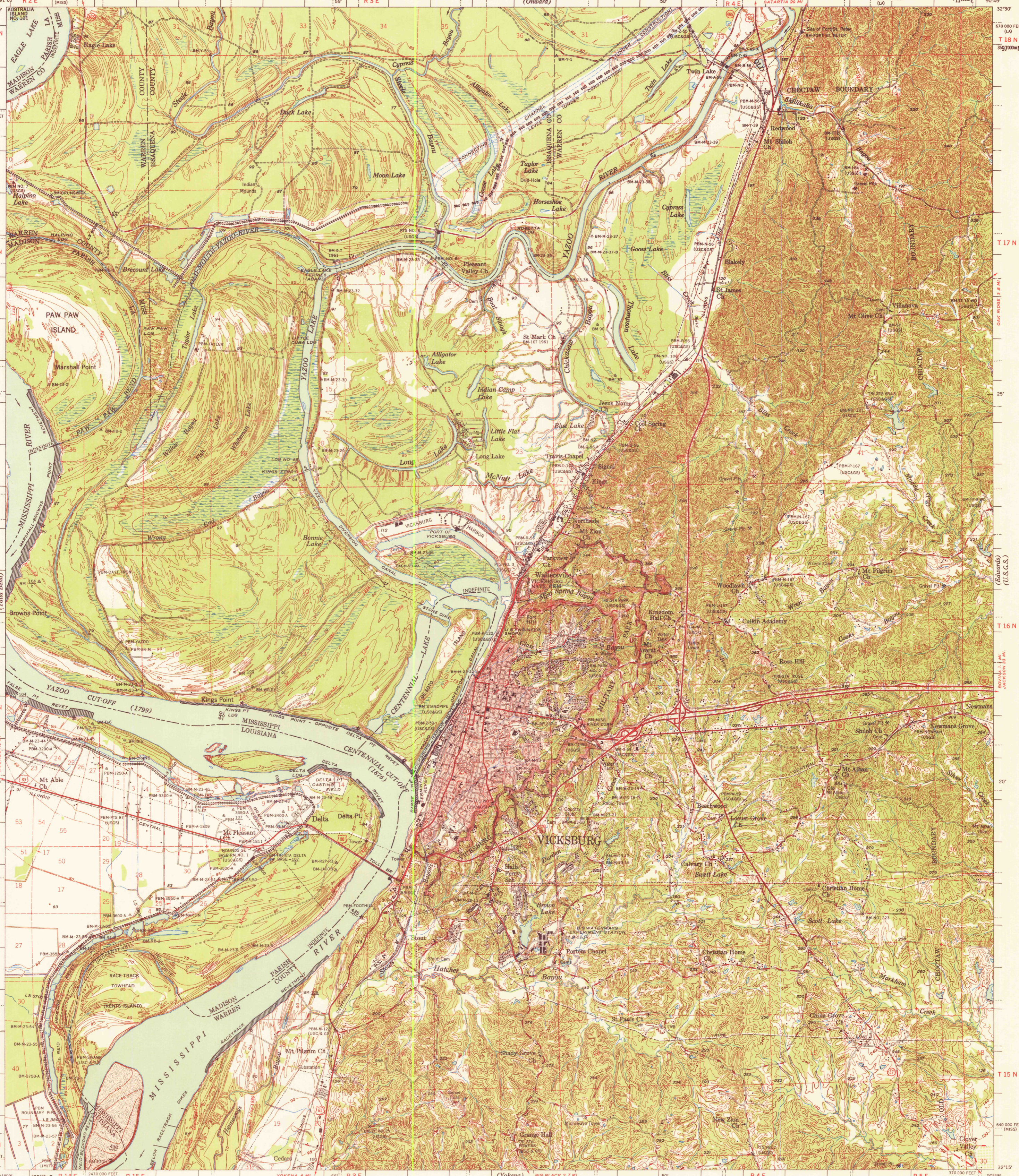
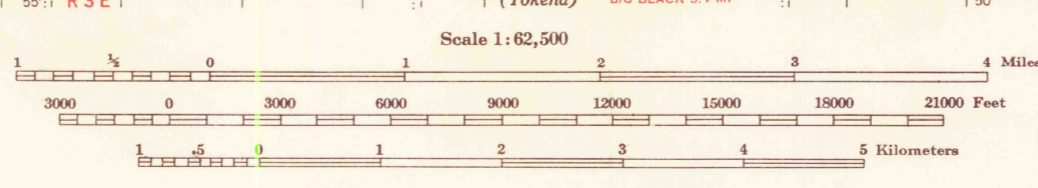


U. S. ARMY
CORPS OF ENGINEERS

VICKSBURG QUADRANGLE
MISSISSIPPI-LOUISIANA



Mapped, edited and published under the direction of the President, Mississippi River Commission, by the U. S. Army Engineer District, Vicksburg, Corps of Engineers.
Compiled in 1964 from Mississippi, 1:24,000, U. S. G. S., Long Lake, Redwood, Vicksburg West and Vicksburg East, 1962. Field checked 1964.
1:24,000 maps compiled by photogrammetric methods from aerial photographs taken 1961-62, planetable surveys 1962, and from maps by City of Vicksburg, by U. S. Geological Survey, 1962.
Control by Mississippi River Commission and U. S. Army Engineer District, Vicksburg, Corps of Engineers, U. S. Coast and Geodetic Survey and U. S. Geological Survey.
Polyconic Projection 1927, North American Datum.
Descriptions, elevations and geodetic positions of permanent survey marks may be obtained from the U. S. Army Engineer District, Vicksburg, Corps of Engineers, Vicksburg, Mississippi.
Political boundaries are shown according to best available information.
Work under Flood Control Act shown as of June 1964.
This map complies with National Map accuracy standards.



Scale 1:62,500
3000 0 3000 6000 9000 12000 15000 18000 21000 Feet
3 0 3 6 9 12 15 18 21 Kilometers

Contour interval 5 feet changing at the 100 foot contour line to a 20 foot interval

DATUM IS MEAN SEA LEVEL

ONE THOUSAND METER UNIVERSAL TRANSVERSE MERCATOR GRID ZONE 15 IS INDICATED BY TICKS OUTSIDE THE NEATLINE

MISSISSIPPI STATE GRID ZONE WEST IS INDICATED BY DOTTED TICKS OUTSIDE THE NEATLINE AT 10,000 FOOT INTERVALS

LOUISIANA STATE GRID ZONE NORTH IS INDICATED BY DASH DOT TICKS OUTSIDE THE NEATLINE AT 10,000 FOOT INTERVALS

PRINTED BY ARMY-M.R.C., VICKSBURG, MISS. 11-64 1129

LEGEND

Levee	Levee Mile Post	LMP
Secondary Levee	Levee Station	LS
Retard and dikes	Towhead	TH
Revetment	River Gate	●

ROAD DATA 1964

In developed areas, only through roads are classified

Hard surface, heavy duty
Hard surface, medium duty
Loose surface, graded and drained,
or narrow hard surface road
Improved dirt road or street
Unimproved dirt road, trail

Interstate Route U. S. Route State Route

Distances on Mississippi River above Head of Passes are shown at 5 mile intervals.
Distances on Yazoo River above City Landing at Vicksburg are shown at 5 mile intervals.
Distances on Steele Bayou above mouth of Vicksburg are shown at 5 mile intervals.

Additional copies may be procured from
U. S. Army Engineer District, Vicksburg, Corps of Engineers,
Vicksburg, Miss. 30 cents per copy

USGS
HISTORICAL FILE
TOPOGRAPHIC DIVISION

VICKSBURG, MISS.-LA.
EDITION OF 1964
N3215-W9045/15