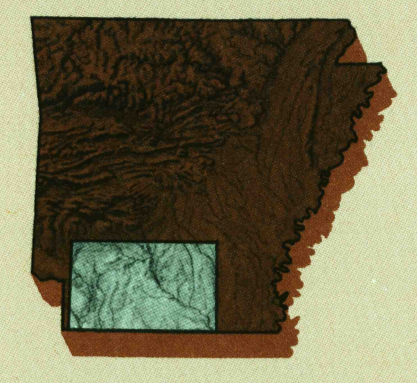


El Dorado

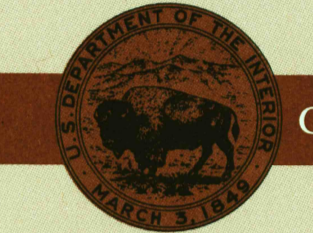
ARKANSAS - LOUISIANA

1:250 000-scale metric
topographic map



1 X 2 DEGREE QUADRANGLE
SHOWING

- Contours and elevations in meters
- Highways, roads and other manmade structures
- Water features
- Woodland areas
- Geographic names



GEOLOGICAL SURVEY

1989

Produced by the United States Geological Survey
 Compiled from USGS 1:100 000-scale maps dated 1985-86
 Supersedes map dated 1953. Map edited 1989
 North American Datum of 1983 (NAD 83). Projection and
 10 000-meter grid: Universal Transverse Mercator, zone 15
 25 000-meter grid ticks: Arkansas (south zone) and
 Louisiana (north zone), Coordinate Systems of 4983
 The difference between NAD 83 and North American Datum of
 1927 (NAD 27) for 7.5-minute intersections is given in USGS
 Bulletin 1875
 Certain land grant names and boundaries are omitted to
 avoid congestion
 There may be private inholdings within the boundaries of
 the National or State reservations shown on this map

1989 MAGNETIC DECLINATION FROM TRUE NORTH VARIES FROM 4° (80 MILS)
 EASTERLY FOR THE CENTER OF THE WEST EDGE TO 3° (60 MILS) EASTERLY
 FOR THE CENTER OF THE EAST EDGE. MEAN ANNUAL CHANGE IS 6.6 WESTERLY

CONTOUR INTERVAL 20 METERS
 NATIONAL GEODETIC VERTICAL DATUM OF 1929
 ELEVATIONS SHOWN TO THE NEAREST METER

THIS MAP COMPLES WITH NATIONAL MAP ACCURACY STANDARDS
 USGS NMD HISTORICAL MAP
 AUG 27 1990
 REC'D FILE COPY

CONVERSION TABLE	
Meters	Feet
1	3.2808
2	6.5617
3	9.8425
4	13.1234
5	16.4042
6	19.6850
7	22.9659
8	26.2467
9	29.5275
10	32.8084

To convert meters to feet multiply by 3.2808
 To convert feet to meters multiply by 0.3048

ADJOINING MAPS		
1	2	3
4	5	
6	7	8

1 McAlester
 2 Little Rock
 3 Helena
 4 Texarkana
 5 Greenwood
 6 Tyler
 7 Shreveport
 8 Jackson

FOR SALE BY U.S. GEOLOGICAL SURVEY
 DENVER, COLORADO 80225, OR RESTON, VIRGINIA 22092

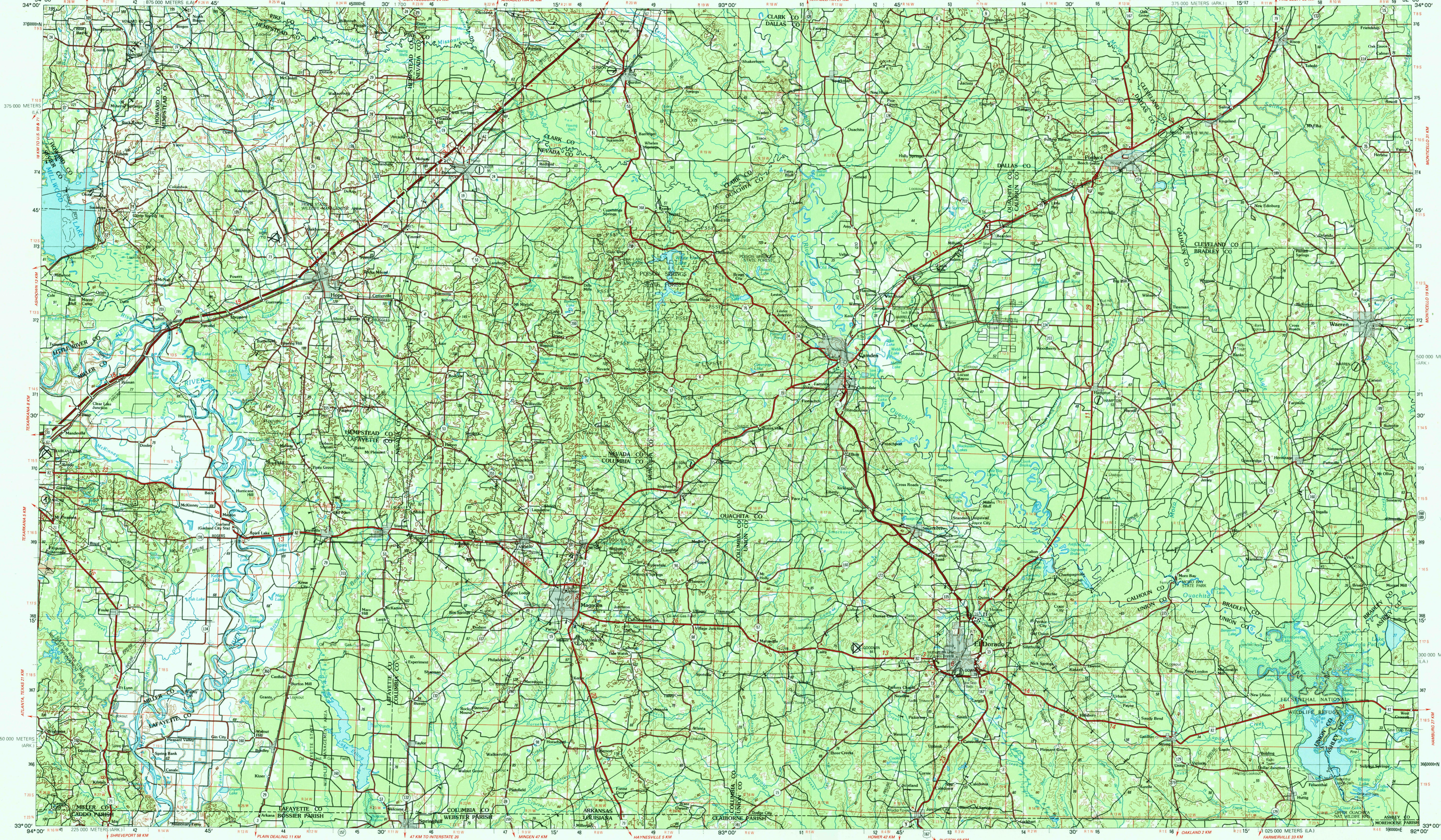
Topographic Map Symbols

- Dual highway, interchange
- Primary highway, hard surface
- Secondary highway, hard surface
- Light duty road, hard or improved surface
- Other road, dirt, gravel or improved surface
- Road marker: Interstate, U.S., State
- Bridge, overpass, underpass
- Tunnel: road, railroad
- Railroad: standard gauge, single, multiple track
- Railroad: narrow gauge, single, multiple track
- Roll-up area, locality, elevation
- Airport: runway pattern shown, unknown
- National boundary
- State boundary
- County boundary
- National or State reservation boundary
- Land grant boundary
- U.S. public lands survey: range, township (surveyed)
- U.S. public lands survey: range, township (granted)
- Pipeline: oil, gas, water, underground
- Dam: landmark feature, landmark building
- Well: water, other; spring; tank
- Cave; mine; quarry; oil platform
- Landmark area: landmark railroad
- Dissected surface: silt, mine, lava, sand
- Contours: index; intermediate; supplementary
- Bathymetric contours: index; primary
- Bathymetric contours: intermediate; supplementary
- Stream, lake: perennial; intermittent
- Rapid, large and small; falls, large and small
- Land subject to controlled inundation: marsh, swamp
- Woodland, orchard, vineyard
- Mangrove

Figures in red denote approximate distances in kilometers between markers

EL DORADO, ARKANSAS-LOUISIANA

1 X 2 DEGREE SERIES (TOPOGRAPHIC)



SCALE 1:250 000
 1 CENTIMETER ON THE MAP REPRESENTS 2.5 KILOMETERS ON THE GROUND
 CONTOUR INTERVAL 20 METERS

KILOMETERS 0 5 10 15 20 25 30
 METERS 0 5000 10000 15000 20000 25000 30000 35000
 MILES 0 5 10 15 20 25 30
 FEET 0 10000 20000 30000 40000 50000 60000 70000 80000 90000 100000

EL DORADO, ARKANSAS-LOUISIANA
33092-A1-TM-250

1989