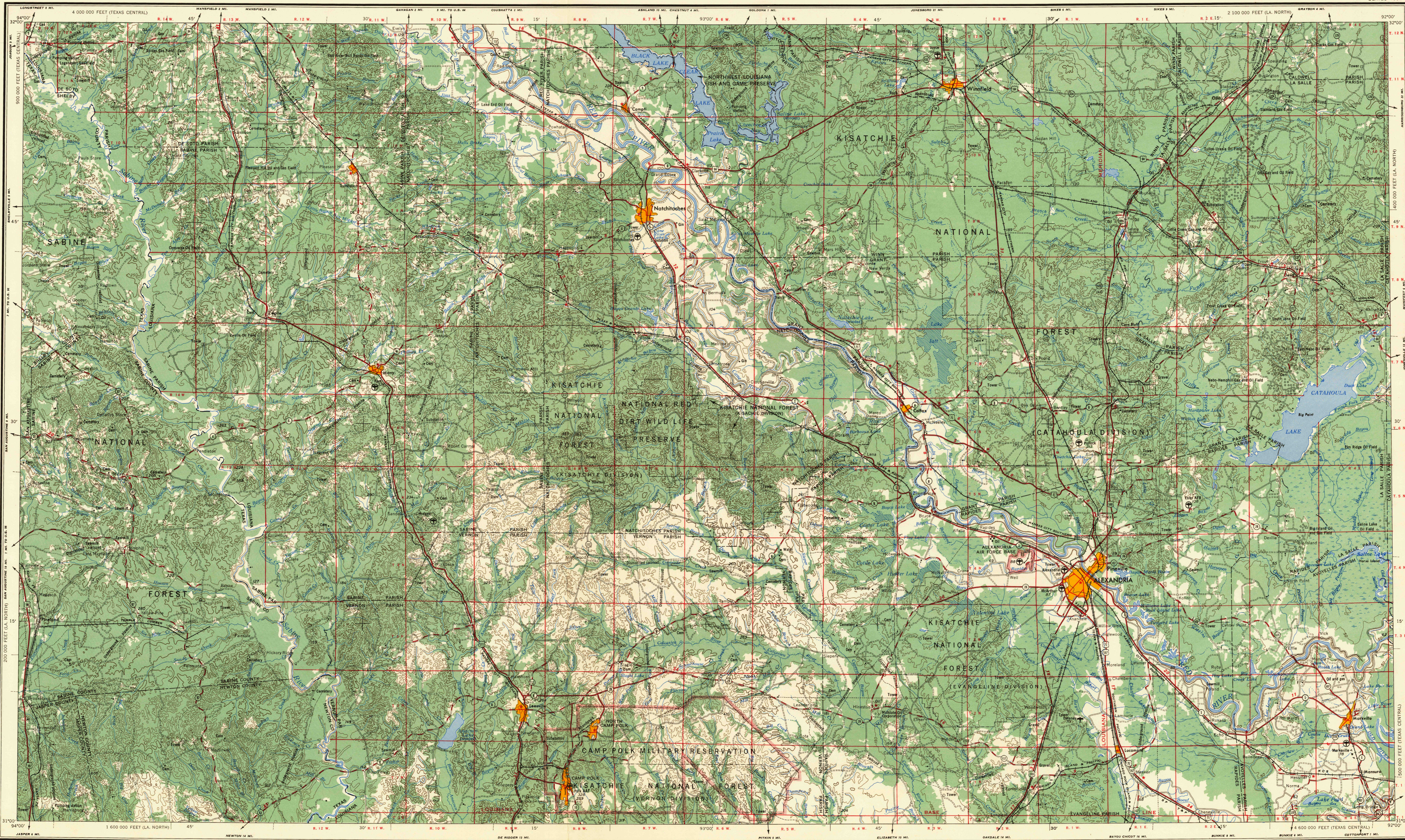


# ALEXANDRIA



V502

Prepared by the Army Map Service (AMS), Corps of Engineers, U. S. Army, Washington, D. C. Compiled in 1954 by photogrammetric methods. Horizontal and vertical control by USGS, USCGS, and Louisiana Geologic Survey. Aerial photography 1953. Photography field annotated 1953.

**LEGEND**

**ROAD DATA 1953**  
 Figures in red denote approximate distances in miles between stars

**POPULATED PLACES**

Over 500,000	Los Angeles
100,000 to 500,000	Omaha
25,000 to 100,000	Galveston
5,000 to 25,000	Laramie
1,000 to 5,000	Grand Coulee
Less than 1,000	Sun Valley

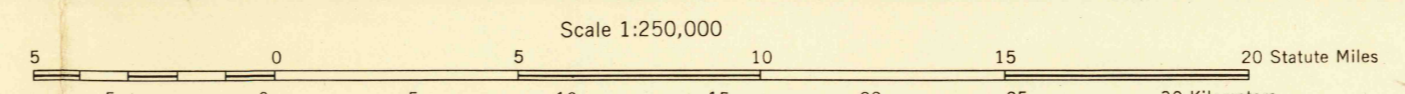
**ROADS**

Hard surface, heavy duty	Two lanes wide, Federal route marker
Hard surface, medium duty	Two lanes wide, State route marker
Improved light duty	Trail

**RAILROADS**

Standard gauge	Single track Double or Multiple
Narrow gauge	Landplane airport
International	Landing area
State	Seaplane airport
County or Parish	Seaplane anchorage
Park or reservation	Woods-brushwood
Military reservation	Power line

**LANDMARKS**: School; Church; Other, 2 1 1  
 Horizontal control point  
 Spot elevation in feet  
 Marsh or swamp  
 Intermittent or dry stream



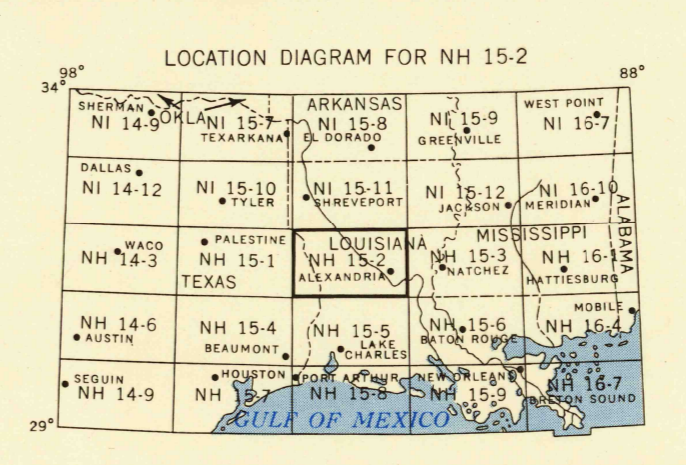
CONTOUR INTERVAL 50 FEET  
 WITH SUPPLEMENTARY CONTOURS AT 25 FOOT INTERVALS

TRANSVERSE MERCATOR PROJECTION

100,000 FOOT BRIDGE BASED ON LOUISIANA COORDINATE SYSTEM,  
 NORTH ZONE, AND TEXAS COORDINATE SYSTEM, CENTRAL ZONE

1955 MAGNETIC DECLINATION FOR THIS SHEET VARIES FROM 7°45' EASTERLY FOR THE CENTER OF THE WEST  
 EDGE TO 6°45' EASTERLY FOR THE CENTER OF THE EAST EDGE. MEAN ANNUAL CHANGE IS 0°00' WESTERLY.

FOR SALE BY U. S. GEOLOGICAL SURVEY, FEDERAL CENTER, DENVER, COLORADO OR WASHINGTON 25, D. C.



PRINTED BY ARMY MAP SERVICE, CORPS OF ENGINEERS, 9-55, 91261-055

U.S.G.S. FILE COPY  
 TOPOGRAPHIC DIVISION

SECTIONIZED TOWNSHIP

6	5	4	3	2	1
7	8	9	10	11	12
13	14	15	16	17	18
19	20	21	22	23	24
25	26	27	28	29	30
31	32	33	34	35	36

TOWNSHIP OR RANGE LINE  
 LAND GRANT BOUNDARY

Oct. 17, 1955  
 Printed by G.M.S. for G.S.  
 (3000)