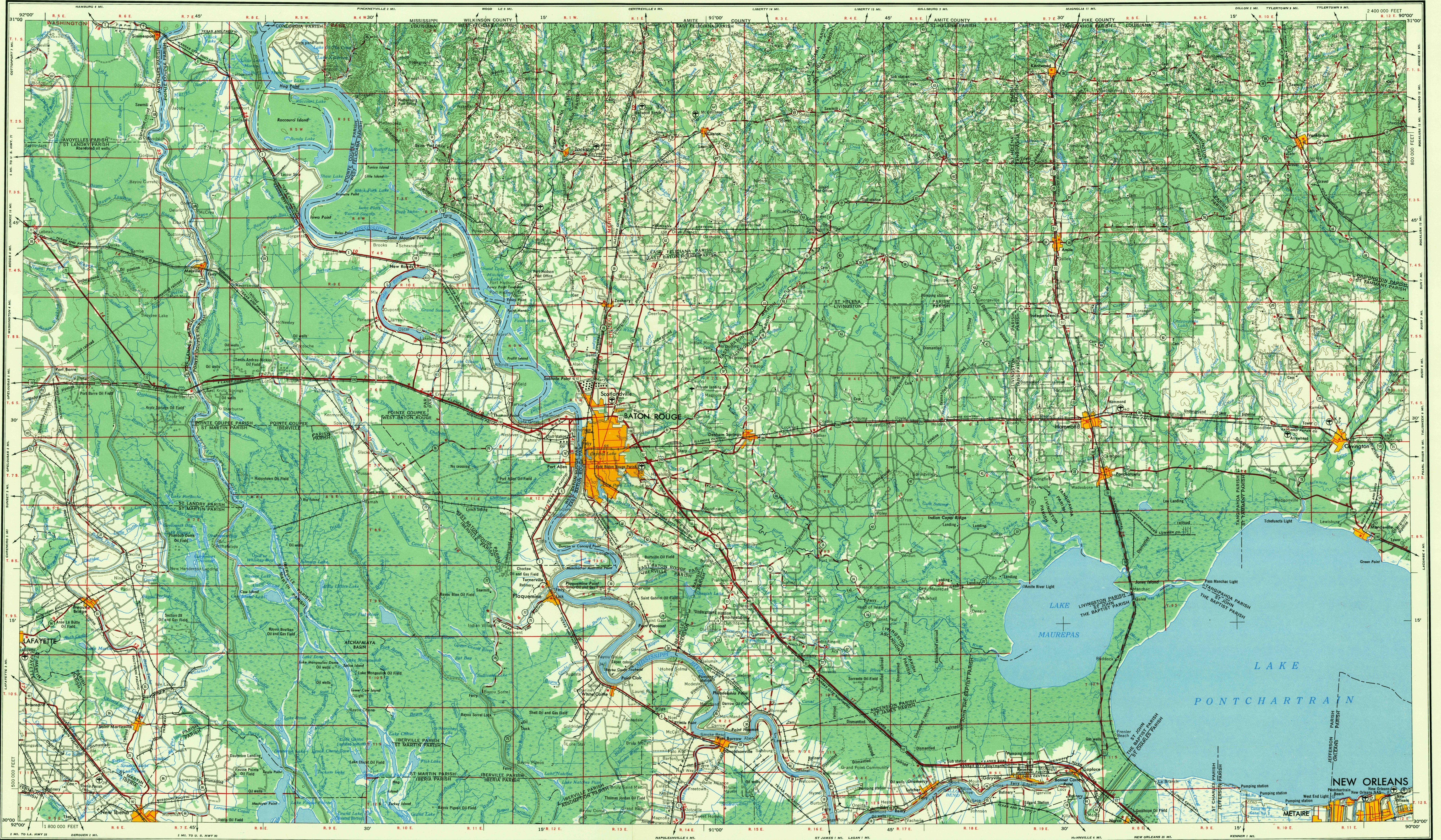


# BATON ROUGE

U.S.G.S.  
FILE COPY  
TOPOGRAPHIC DIVISION



V502

Prepared by the Army Map Service (AMS), Corps of Engineers, U. S. Army, Washington, D. C. Compiled in 1954 by photogrammetric methods. Horizontal and vertical control by USCGS, and USGS. Aerial photography 1952. Photography field annotated 1954.

**LEGEND**

**ROAD DATA 1955**  
Figures in red denote approximate distances in miles between stars

**POPULATED PLACES**  
Over 500,000  
100,000 to 500,000  
25,000 to 100,000  
5,000 to 25,000  
1,000 to 5,000  
Less than 1,000

**BOUNDARIES**  
Standard gauge  
Narrow gauge  
International  
State  
Parish/County  
Park or reservation

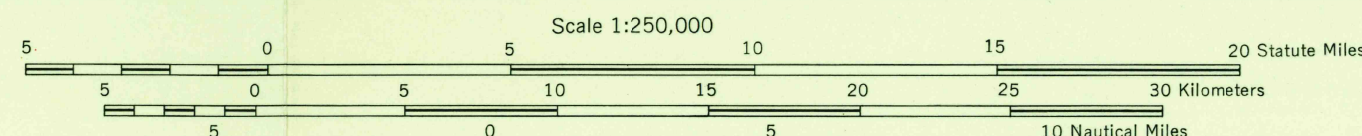
**ROADS**  
Single track  
Double or Multiple  
Landing area  
Landplane airport  
Horizontal control point  
Spot elevation in feet  
Marsh or swamp  
Intermittent or dry stream  
Woods-brushwood

**Other Symbols**  
Landmarks: School; Church; Other  
Power line

**ROADS (continued)**  
Hard surface, heavy duty  
Two lanes wide; Federal route marker  
Hard surface, medium duty  
More than two lanes wide  
Two lanes wide; State route marker  
Improved light duty  
Dirt  
Trail

**LAKE**  
Los Angeles  
Omaha  
Galveston  
Laramie  
Grand Coulee  
Sun Valley

**LAKE**  
Two lanes wide  
Two lanes wide  
Two lanes wide

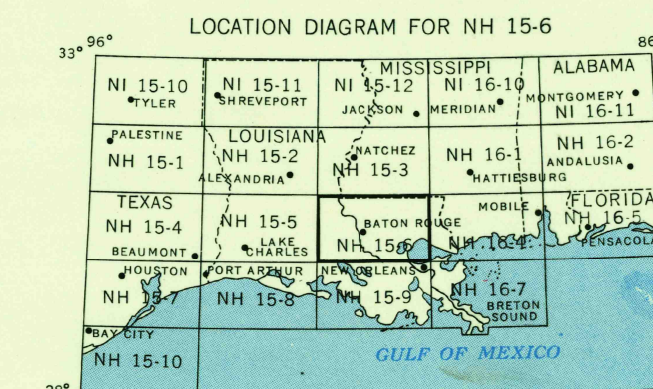


CONTOUR INTERVAL 50 FEET WITH SUPPLEMENTARY CONTOURS AT 25 FOOT INTERVALS  
TRANSVERSE MERCATOR PROJECTION

100,000 FOOT GRID BASED ON LOUISIANA COORDINATE SYSTEM, SOUTH ZONE

1955 MAGNETIC DECLINATION FOR THIS SHEET VARIES FROM 6°45' EASTERLY FOR THE CENTER OF THE WEST EDGE TO 6°00' EASTERLY FOR THE CENTER OF THE EAST EDGE. MEAN ANNUAL CHANGE IS 0°00' WESTERLY.

FOR SALE BY U. S. GEOLOGICAL SURVEY, FEDERAL CENTER, DENVER, COLORADO OR WASHINGTON 25, D. C.



U.S.G.S. FILE COPY TOPOGRAPHIC DIVISION

PRINTED BY ARMY MAP SERVICE, CORPS OF ENGINEERS, 1-56, 91261

SECTIONED TOWNSHIP

|    |    |    |    |    |    |
|----|----|----|----|----|----|
| 6  | 5  | 4  | 3  | 2  | 1  |
| 7  | 8  | 9  | 10 | 11 | 12 |
| 13 | 14 | 15 | 16 | 17 | 18 |
| 19 | 20 | 21 | 22 | 23 | 24 |
| 25 | 26 | 27 | 28 | 29 | 30 |
| 31 | 32 | 33 | 34 | 35 | 36 |

TOWNSHIP OR RANGE LINE  
LAND GRANT BOUNDARY

BATON ROUGE, LA.; MISS.

JAN 12 1956 Printed by G.M.S. for 9.5