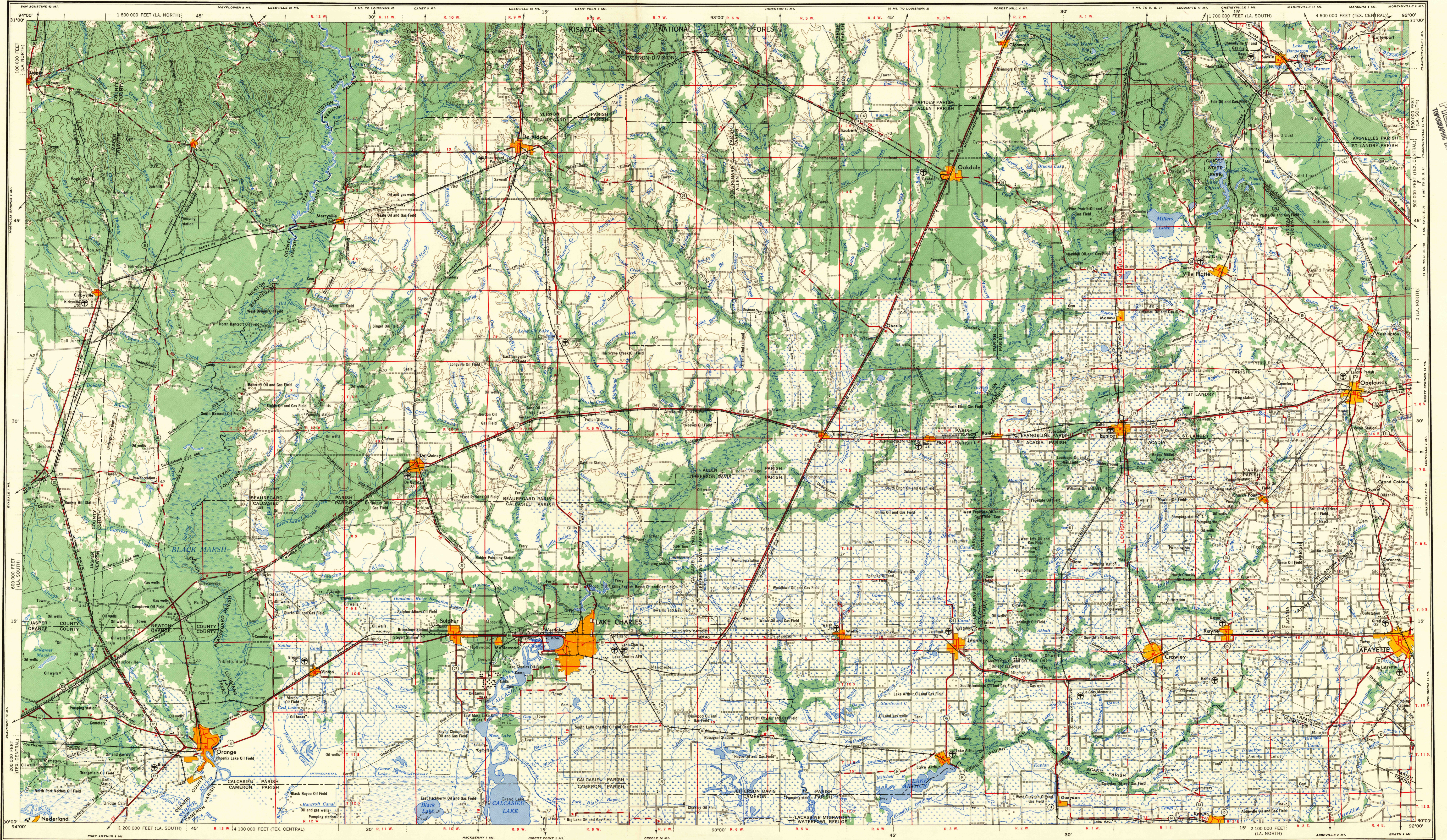


# LAKE CHARLES



5502

Prepared by the Army Map Service (AMS), Corps of Engineers, U. S. Army, Washington, D. C. Compiled in 1954 by photogrammetric methods. Horizontal and vertical control by USCGS and USGS. Photography field annotated 1954. Aerial photography 1952.

**LEGEND**  
ROAD DATA 1954  
Figures in red denote approximate distances in miles between stars

**POPULATED PLACES**  
 Over 500,000  
 100,000 to 500,000  
 25,000 to 100,000  
 5,000 to 25,000  
 1,000 to 5,000  
 Less than 1,000

**RAILROADS**  
 Standard gauge  
 Single track  
 Double or Multiple  
 Narrow gauge  
 Landing area  
 International  
 State  
 County / Parish  
 Park or reservation

**LANDSCAPE**  
 Hard surface, heavy duty  
 Hard surface, medium duty  
 More than two lanes wide  
 Two lanes wide  
 State route marker  
 Improved light duty  
 Dirt  
 Trail

**LANDMARKS**  
 School  
 Church  
 Other  
 Spot elevation in feet  
 Marsh or swampland  
 Intermittent or dry stream  
 Power line

**BOUNDARIES**  
 Landplane airport  
 Seaplane airport  
 Seaplane anchorage  
 Woods-brushwood

**Scale 1:250,000**  
 0 5 10 15 20 25 30 Statute Miles  
 0 5 10 15 20 25 30 Nautical Miles

**CONTOUR INTERVAL 50 FEET**  
 WITH SUPPLEMENTARY CONTOURS AT 25 FOOT INTERVALS  
 TRANSVERSE MERCATOR PROJECTION  
 100,000 FOOT GRIDS BASED ON LOUISIANA COORDINATE SYSTEM,  
 NORTH AND SOUTH ZONES AND TEXAS COORDINATE SYSTEM, CENTRAL ZONE  
 1985 MAGNETIC DECLINATION FOR THIS SHEET VARIES FROM 7°45' EASTERLY FOR THE CENTER OF THE WEST  
 EDGE TO 6°45' WESTERLY FOR THE CENTER OF THE EAST EDGE. MEAN ANNUAL CHANGE IS 0°02' WESTERLY.

**LOCATION DIAGRAM FOR NH 15-5**

31°	DALLAS	NI 14-12	NI 15-10	NI 15-11	NI 15-12	NI 16-10	NI 16-11
		NI 14-3	NI 15-1	NI 15-2	NI 15-3	NI 16-2	NI 16-3
		NI 14-6	NI 15-4	NI 15-5	NI 15-6	NI 16-4	NI 16-5
		NI 14-9	NI 15-7	NI 15-8	NI 15-9	NI 16-7	NI 16-8
		NI 14-12	NI 15-10	NI 15-11	NI 15-12	NI 16-10	NI 16-11

**SECTIONIZED TOWNSHIP**

6	5	4	3	2	1
7	8	9	10	11	12
18	17	16	15	14	13
19	20	21	22	23	24
30	29	28	27	26	25
31	32	33	34	35	36

**U.S.G.S. FILE COPY TOPOGRAPHIC DIVISION**

**FOR SALE BY U. S. GEOLOGICAL SURVEY, FEDERAL CENTER, DENVER, COLORADO OR WASHINGTON 25, D. C.**

LAKE CHARLES, LOUISIANA; TEXAS

JAN 12 1956 Printed by G.M.S. for G.S. 3000