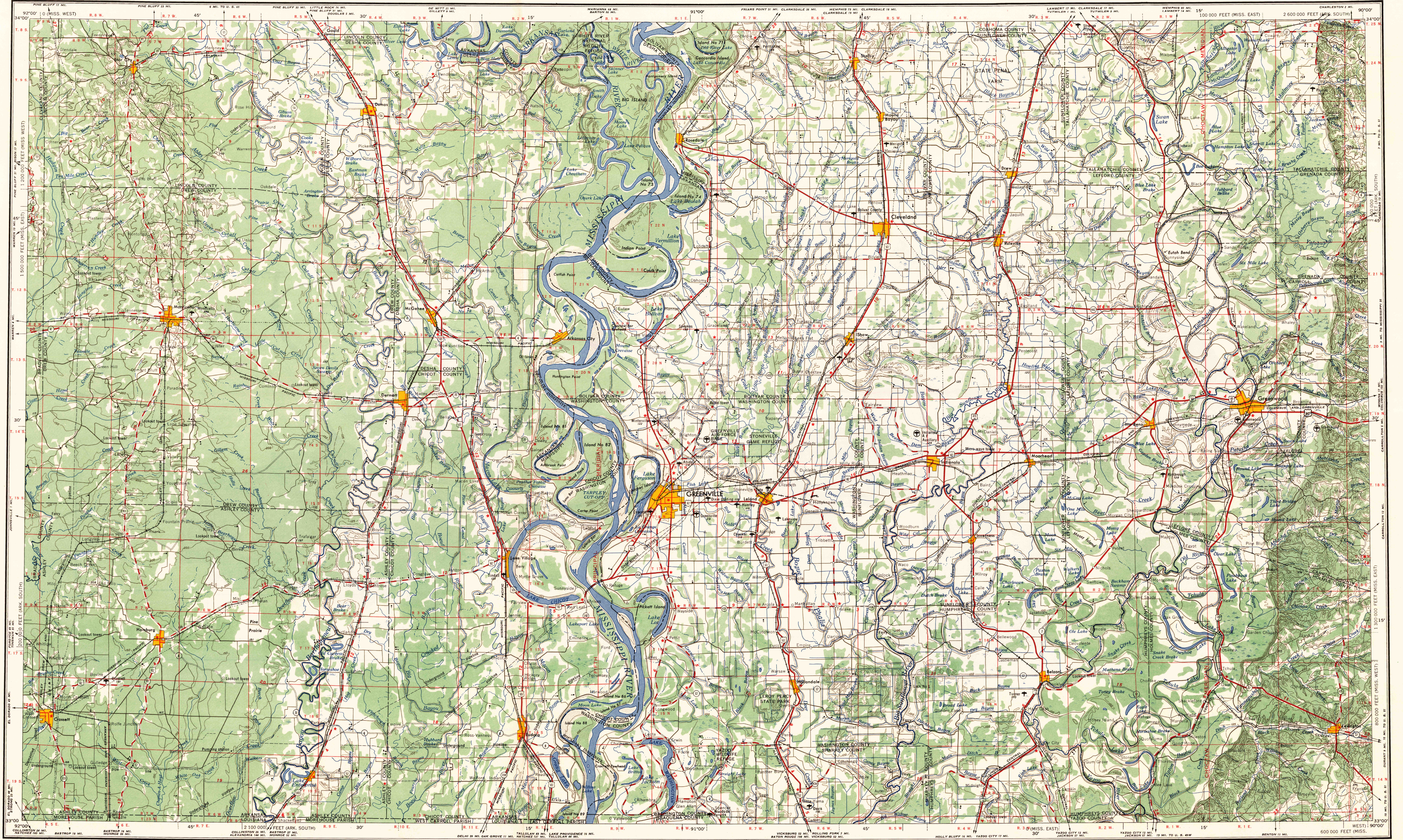


GREENWOOD

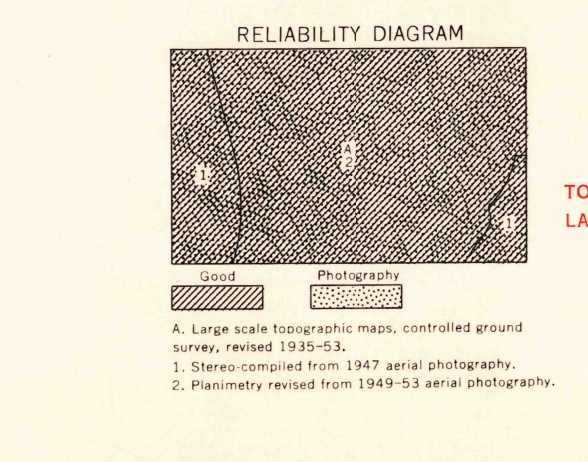


Prepared by the Army Map Service (AMS), Corps of Engineers, U. S. Army, Washington, D. C. Compiled in 1954 by photogrammetric methods and from United States Quadrangles, 1:62,500, Corps of Engineers, edition 1936-54; and County and Parish Highway maps, revised 1950-54. Planimetric detail revised by photogrammetric methods. Horizontal and vertical control by USGS, USGS, and CE. Map field checked 1953.

LEGEND ROAD DATA 1953. Includes symbols for populated places (Los Angeles, Omaha, Galveston, Laramie, Grand Coulee), railroads, boundaries, and various terrain features like marshes and power lines.

Scale 1:250,000. Includes a graphic scale in statute and nautical miles, and text describing the contour interval (50 feet) and projection (Transverse Mercator).

LOCATION DIAGRAM FOR NI 15-9. A grid diagram showing the map's position within a larger regional context, with township and range coordinates.



USGS FILE COPY TOPOGRAPHIC DIVISION. Includes a sectionized township grid and the text 'GREENWOOD, MISS.; ARK.; LA.' and 'DEC 20 1956 Printed by AMS for G.S. (3000)'.

FOR SALE BY U. S. GEOLOGICAL SURVEY, DENVER 2, COLORADO OR WASHINGTON 25, D. C.