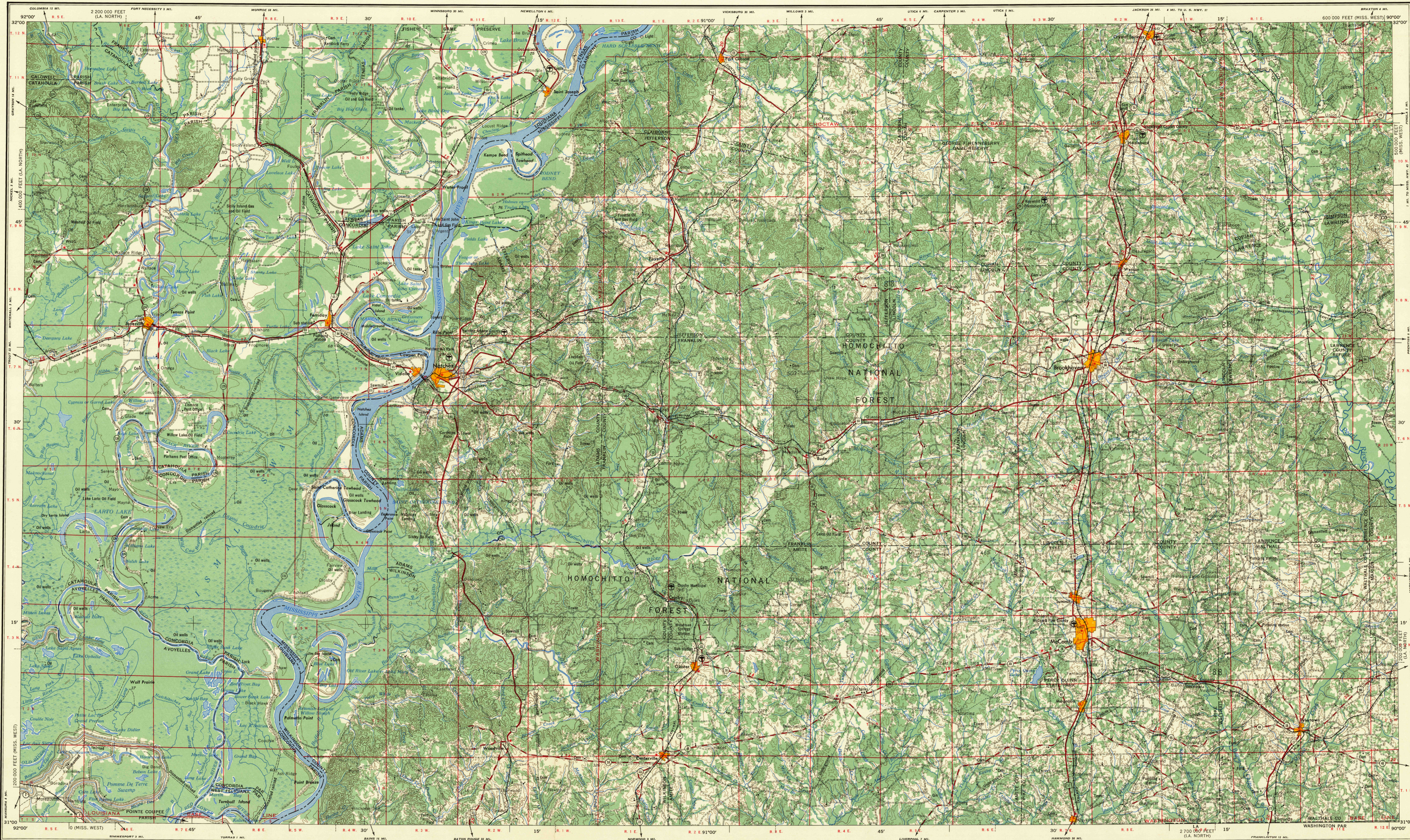


# NATCHEZ



V502

Prepared by the Army Map Service (AJAM), Corps of Engineers, U. S. Army, Washington, D. C. Compiled in 1954 by photogrammetric methods. Horizontal and vertical control by USGS, USCGS, and Louisiana Geologic Survey. Aerial photography 1952. Photography field annotated 1953.

**LEGEND**

**ROAD DATA 1955**  
 Figures in red denote approximate distances in miles between stars

**POPULATED PLACES**

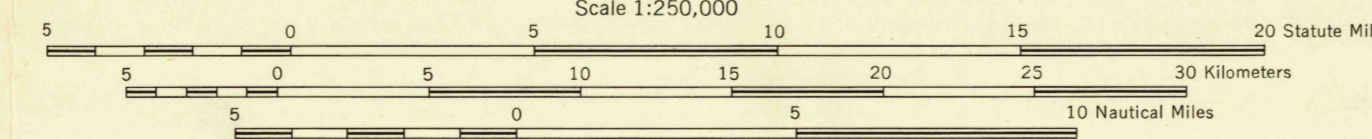
Over 500,000	<b>LOS ANGELES</b>
100,000 to 500,000	<b>OMAHA</b>
25,000 to 100,000	<b>GALVESTON</b>
5,000 to 25,000	<b>Loraine</b>
1,000 to 5,000	
Less than 1,000	

**RAILROADS**  
 Standard gauge, Single track, Double or Multiple track  
 Narrow gauge, Landplane airport  
 Landing area, Seaplane airport  
 Parish/County boundary, Seaplane anchorage  
 Park or reservation, Woods-brushland

**BOUNDARIES**  
 International, State, Parish/County, Park or reservation

**LANDS**  
 Hard surface, heavy duty (3 LANE 14 LANE)  
 Hard surface, medium duty (2 LANE 14 LANE)  
 Hard surface, light duty (2 LANE 14 LANE)  
 Improved light duty  
 Dirt  
 Sun Valley

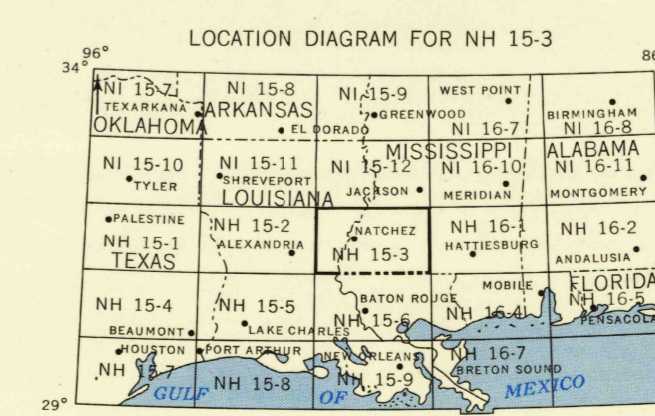
**LANDMARKS**  
 School, Church, Other, Spot elevation in feet, Marsh or swamp, Intermittent or dry stream, Power line



CONTOUR INTERVAL 50 FEET  
 TRANSVERSE MERCATOR PROJECTION  
 100,000 FOOT GRIDS BASED ON LOUISIANA COORDINATE SYSTEM,  
 NORTH ZONE AND MISSISSIPPI COORDINATE SYSTEM, WEST ZONE

1953 MAGNETIC DECLINATION FOR THIS SHEET VARIES FROM 6°45' EASTERLY FOR THE CENTER OF THE WEST EDGE TO 5°45' EASTERLY FOR THE CENTER OF THE EAST EDGE. MEAN ANNUAL CHANGE IS 0°01' WESTERLY.

FOR SALE BY U. S. GEOLOGICAL SURVEY, FEDERAL CENTER, DENVER, COLORADO OR WASHINGTON 25, D. C.



PRINTED BY ARMY MAP SERVICE, CORPS OF ENGINEERS, 1-56, 91621

USGS Historical File Topographic Division

SECTIONIZED TOWNSHIP

6	5	4	3	2	1
7	8	9	10	11	12
18	17	16	15	14	13
19	20	21	22	23	24
30	29	28	27	26	25
31	32	33	34	35	36

NATCHEZ, MISS.; LA.