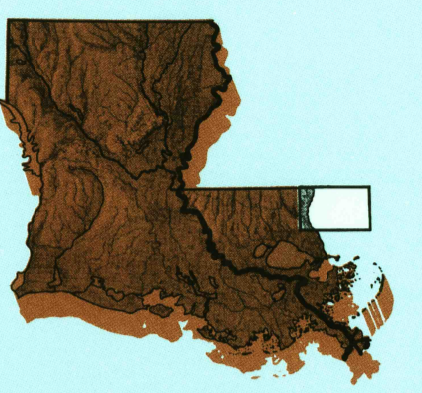


Bogalusa

LOUISIANA-MISSISSIPPI

1:100 000-scale metric topographic map



30 X 60 MINUTE QUADRANGLE SHOWING

- Contours and elevations in meters
- Highways, roads and other manmade structures
- Water features
- Woodland areas
- Geographic names



Produced by the United States Geological Survey
 Compiled from USGS 1:24 000- and 1:62 500-scale topographic maps dated 1958-1983. Planimetry revised from aerial photographs taken 1985-91 and other source data. Revised information not field checked. Map edited 1994.
 North American Datum of 1927 (NAD 27). Projection and 10 000-meter grid: Universal Transverse Mercator, zone 16 25 000-foot ticks: Mississippi coordinate system, east zone and Louisiana coordinate system, south zone.
 The values of the shift between NAD 27 and North American Datum of 1983 (NAD 83) for 7.5-minute intersections are obtainable from National Geographic Survey NADCON software.
 There may be private inholdings within the boundaries of the National or State reservations shown on this map.

CONTOUR INTERVAL 10 METERS
 NATIONAL GEODETIC VERTICAL DATUM OF 1929
 ELEVATIONS SHOWN TO THE NEAREST METER

THIS MAP COMPLES WITH NATIONAL MAP ACCURACY STANDARDS
 FOR SALE BY U.S. GEOLOGICAL SURVEY
 DENVER, COLORADO 80225

CONVERSION TABLE		DECLINATION DIAGRAM		ADJOINING MAPS		
Meters	Feet	Magnetic Declination		1	2	3
1	3.2808	23° 11' 27" W		4	5	6
2	6.5617	23° 11' 27" W		7	8	
3	9.8425	23° 11' 27" W		1 McComb		
4	13.1234	23° 11' 27" W		2 Hattiesburg		
5	16.4042	23° 11' 27" W		3 Circumville		
6	19.6850	23° 11' 27" W		4 Amite		
7	22.9659	23° 11' 27" W		5 Mobile		
8	26.2467	23° 11' 27" W		6 Ponchartroula		
9	29.5275	23° 11' 27" W		7 Gulfport		
10	32.8084	23° 11' 27" W		8 Biloxi		

To convert meters to feet multiply by 3.2808
 To convert feet to meters multiply by 0.3048

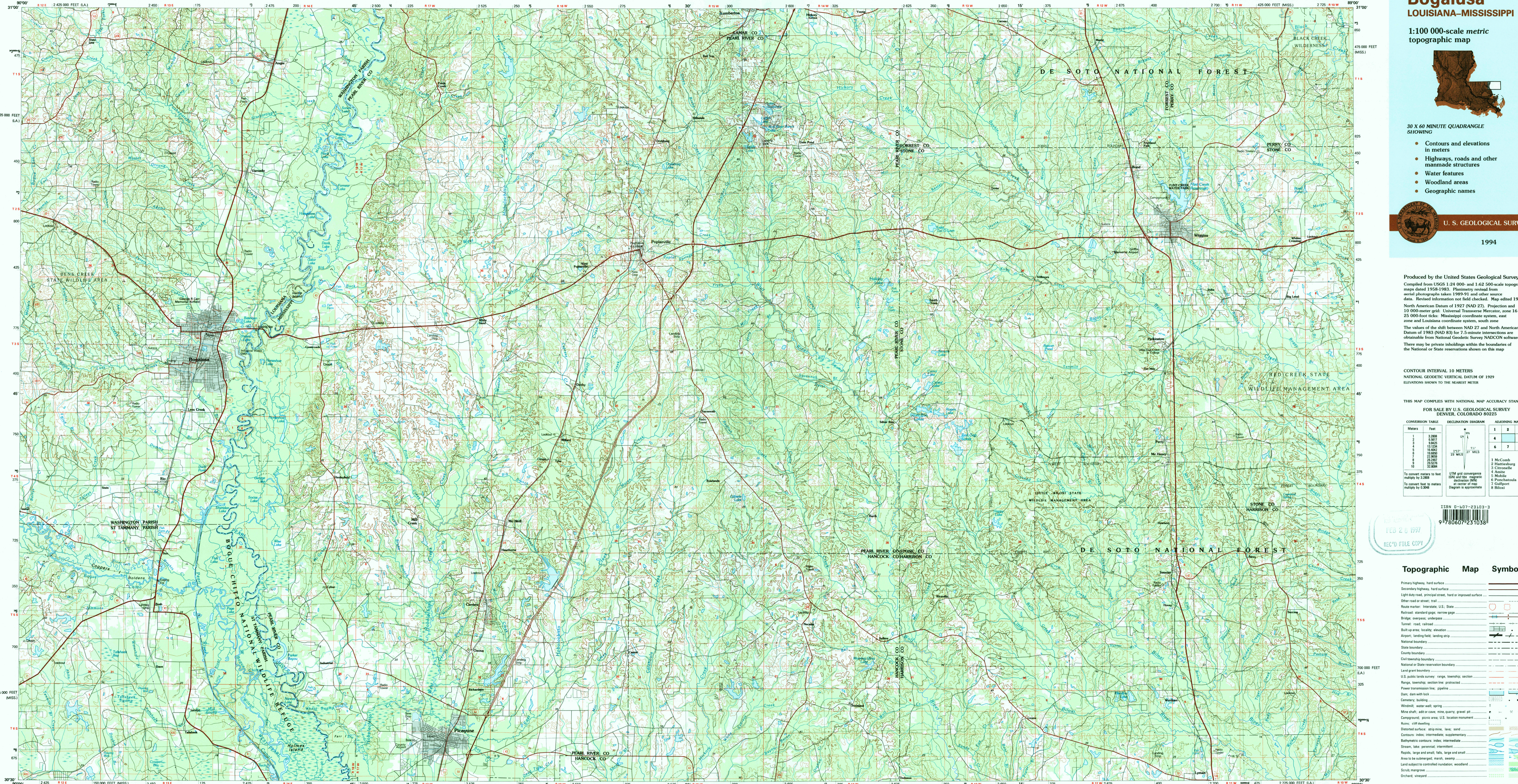
UTM grid convergence (GM) and false meridian declination (FM) at center of map. Diagram is approximate.



Topographic Map Symbols

- Primary highways, hard surface
- Secondary highways, hard surface
- Light duty road, principal street, hard or improved surface
- Other road or street; trail
- Route marker: Interstate, U.S. State
- Railroad: standard gauge; narrow gauge
- Bridge: overpass; underpass
- Tunnel: road; railroad
- Built up area, locality, elevation
- Airport: landing field; landing strip
- National boundary
- State boundary
- County boundary
- Civil township boundary
- National or State reservation boundary
- Land grant boundary
- U.S. public lands survey: range, township, section
- Range, township, section line; grouted
- Power transmission line; pipeline
- Dam; dam with lock
- Cemetery; building
- Wellhead; water well; spring
- Mine shaft; adit or cave; mine; quarry; gravel pit
- Campground; picnic area; U.S. location monument
- Ruin; cliff dwelling
- Dotted surface: strip mine, lava; sand
- Contours: index, intermediate, supplementary
- Bathymetric contours: index, intermediate
- Stream, lake: perennial, intermittent
- Rapids, large and small; falls, large and small
- Area to be submerged; marsh, swamp
- Land subject to controlled inundation; woodland
- Scrub, mangrove
- Orchard; vineyard

A pamphlet describing topographic maps is available on request.



SCALE 1:100 000
 1 CENTIMETER ON THE MAP REPRESENTS 1 KILOMETER ON THE GROUND
 CONTOUR INTERVAL 10 METERS

