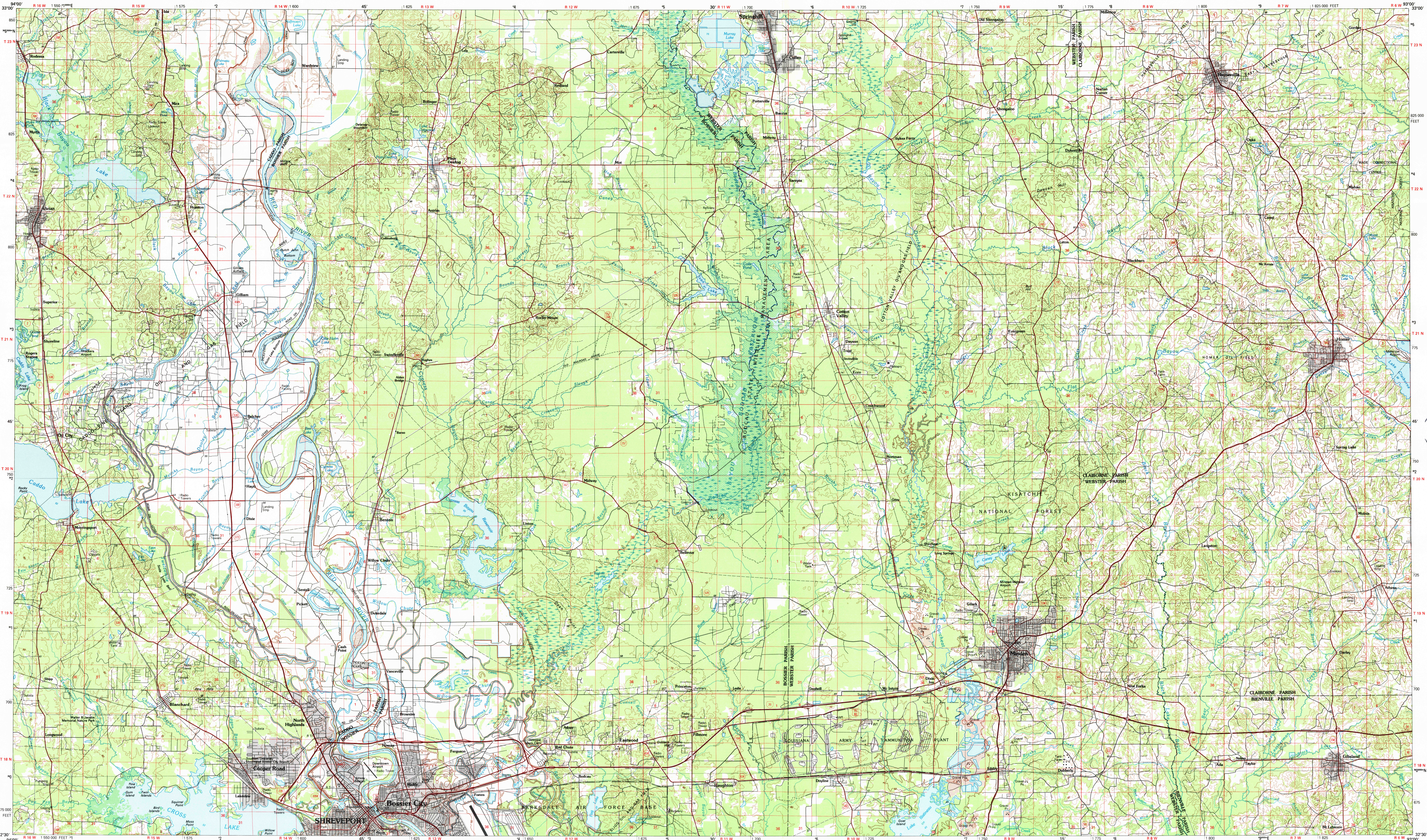


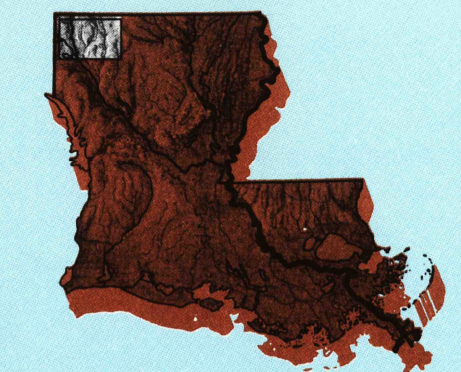
SHREVEPORT NORTH, LOUISIANA

30 X 60 MINUTE SERIES (TOPOGRAPHIC)



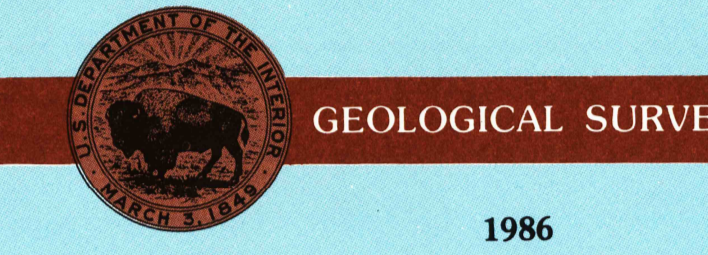
Shreveport North LOUISIANA

1:100 000-scale metric topographic map



30 X 60 MINUTE QUADRANGLE SHOWING

- Contours and elevations in meters
- Highways, roads and other manmade structures
- Water features
- Woodland areas
- Geographic names



Produced by the United States Geological Survey
 Compiled from USGS 1:24 000-scale topographic maps dated 1969-1982. Planimetry revised from aerial photographs taken 1982 and other source data. Revised information not field checked. Map edited 1986.

Projection and 10 000-meter grid, zone 15 Universal Transverse Mercator
 25 000-foot grid ticks based on Louisiana coordinate system, north zone. 1927 North American Datum. To place on the predicted North American Datum 1983 move the projection lines 12 meters south and 17 meters east. There may be private inholdings within the boundaries of the National or State reservations shown on this map.

CONTOUR INTERVAL 10 METERS
 NATIONAL GEODETIC VERTICAL DATUM OF 1929
 ELEVATIONS SHOWN TO THE NEAREST METER

USGS NAD 83 MAP COMPATIBLE WITH NATIONAL MAP ACCURACY STANDARDS

FEB 23 1989

REC'D FILE COPY

Meters	Feet
1	3.2808
2	6.5617
3	9.8425
4	13.1234
5	16.4042
6	19.6850
7	22.9659
8	26.2467
9	29.5275
10	32.8084

To convert meters to feet multiply by 3.2808
 To convert feet to meters multiply by 0.3048

UTM grid convergence (GM) and false meridian: declination (MD) at center of map. Diagram is approximate.

DECLINATION DIAGRAM	ADJOINING MAPS
1	1
2	2
3	3
4	4
5	5
6	6
7	7
8	8

1 Tensas
 2 Magnolia
 3 Bienville
 4 Marshall
 5 Moreau North
 6 Henderson
 7 Shreveport South
 8 Moreau South

FOR SALE BY U. S. GEOLOGICAL SURVEY, DENVER, COLORADO 80225 OR RESTON, VIRGINIA 22092

Topographic Map Symbols

- Primary highway, hard surface
- Secondary highway, hard surface
- Light duty road, principal street, hard or improved surface
- Other road or street, trail
- Road marker: Interstate, U. S., State
- Railroad: standard gage, narrow gage
- Bridge, overpass, underpass
- Tunnel: road, railroad
- Built up area: locality, elevation
- Airport: landing field, landing strip
- National boundary
- State boundary
- County boundary
- National or State reservation boundary
- Land grant boundary
- U. S. public lands survey: range, township, section
- Range, township, section line, overpass
- Power transmission line, pipeline
- Dam; dam with lock
- Cemetery; building
- Windmill; water well; spring
- Mine shaft; cast or ore; mine, quarry; gravel pit
- Campground; picnic area; U. S. location monument
- Ruin; cliff dwelling
- Distorted surface: strip mine, lava; sand
- Contours: index, intermediate, supplementary
- Barometric contours: index, intermediate
- Stream, lake, reservoir; intermittent
- Rapid, large and small; falls, large and small
- Area to be submerged; marsh, swamp
- Land subject to controlled inundation; woodland
- Soak; mangrove
- Ordinal; viewpoint

SCALE 1:100 000
 1 CENTIMETER ON THE MAP REPRESENTS 1 KILOMETER ON THE GROUND
 CONTOUR INTERVAL 10 METERS

SHREVEPORT NORTH, LOUISIANA
 32093-E1-TM-100
 1986