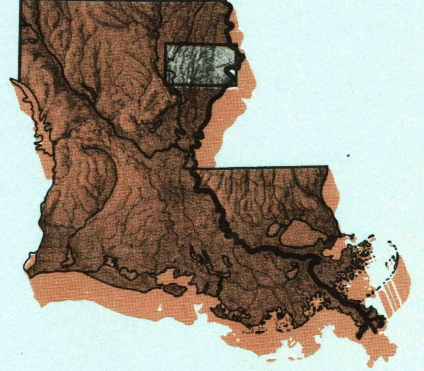


TALLULAH, LOUISIANA-MISSISSIPPI

30 X 60 MINUTE SERIES (TOPOGRAPHIC)

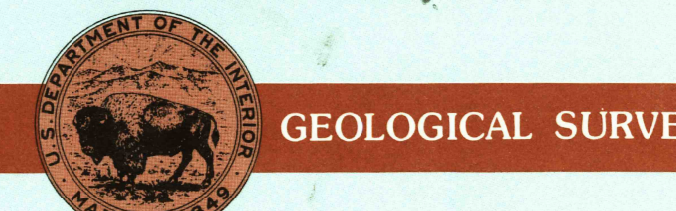
Tallah  
LOUISIANA-MISSISSIPPI

1:100 000-scale metric  
topographic map



30 X 60 MINUTE QUADRANGLE  
SHOWING

- Contours and elevations in meters
- Highways, roads and other manmade structures
- Water features
- Woodland areas
- Geographic names

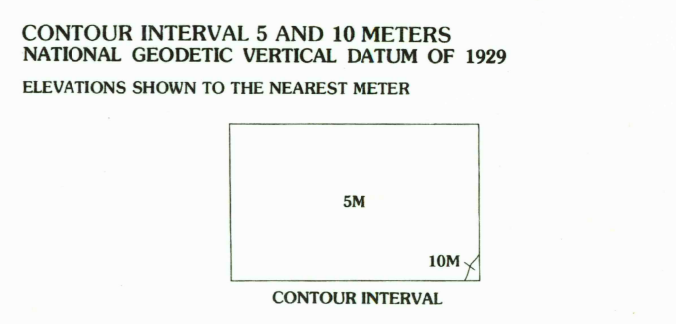


Produced by the United States Geological Survey  
 Compiled from USGS 1:24 000 and 1:62 500-scale topographic maps dated 1957-1969. Planimetry revised from aerial photographs taken 1973 and other source data. Revised information not field checked. Map edited 1982.

Projection and 10 000-meter grid, zone 15  
 Universal Transverse Mercator  
 25 000-foot grid ticks based on Louisiana coordinate system, north zone, and Mississippi coordinate system, west zone 1927 North American Datum  
 To place on the predicted North American Datum 1983 move the projection lines 13 meters south and 11 meters east

There may be private inholdings within the boundaries of the National or State reservations shown on this map

CONTOUR INTERVAL 5 AND 10 METERS  
 NATIONAL GEODETIC VERTICAL DATUM OF 1929  
 ELEVATIONS SHOWN TO THE NEAREST METER



THIS MAP COMPLES WITH NATIONAL MAP ACCURACY STANDARDS

CONVERSION TABLE		DECLINATION DIAGRAM		ADJOINING MAPS	
Meters	Feet	ON	MIN	1	2
1	3.2808		61° 11' W 1.1 MILES	3	4
2	6.5617			4	5
3	9.8425			5	6
4	13.1234			6	7
5	16.4042			7	8
6	19.6850				
7	22.9659				
8	26.2467				
9	29.5275				
10	32.8084				

To convert meters to feet multiply by 3.2808  
 To convert feet to meters multiply by 0.3048

UTM grid convergence (GM) and 1983 magnetic declination (M) at center of map  
 Diagram is approximate

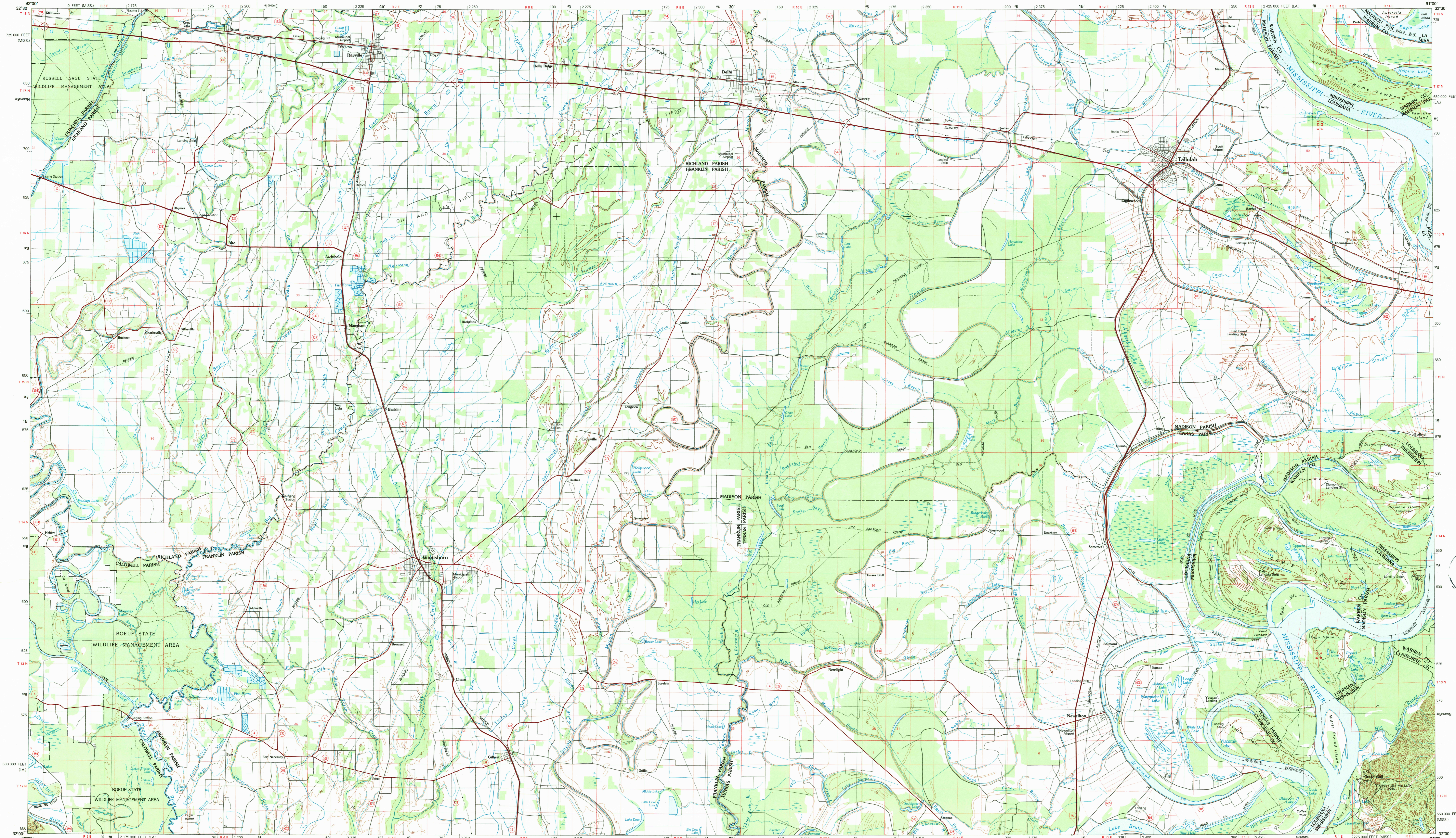
FOR SALE BY U.S. GEOLOGICAL SURVEY, DENVER, COLORADO 80225  
MR. RESTON, VIRGINIA 22092



Topographic Map Symbols

- Primary highway, hard surface
- Secondary highway, hard surface
- Light duty road, principal street, hard or improved surface
- Other road or street, track
- Railroad: standard gauge, narrow gauge
- Bridge, overpass, underpass
- Tunnel: road, railroad
- Ball up area, locality, elevation
- Airport: landing field, landing strip
- National boundary
- State boundary
- County boundary
- Nature or State reservation boundary
- Land grant boundary
- U.S. public lands survey: range, township, section
- Range, township, section line: protracted
- Power transmission line: pipeline
- Dam, dam with lock
- Cemetery: building
- Windmill, water well, spring
- Mine shaft, adit or cave, mine, quarry, gravel pit
- Campground: picnic area, U.S. location monument
- Ruin, city dwelling
- Disturbed surface: strip mine, lava, sand
- Contours: index, intermediate, supplementary
- Bathymetric contours: index, intermediate
- Stream, lake: perennial, intermittent
- Reefs, rock and sand, salt, large and small
- Area to be submerged: marsh, swamp
- Land subject to controlled inundation, woodland
- Scrub, mangrove
- Orchard, vineyard

A pamphlet describing topographic maps is available on request



TALLULAH, LOUISIANA-MISSISSIPPI  
32091-A1-TM-100