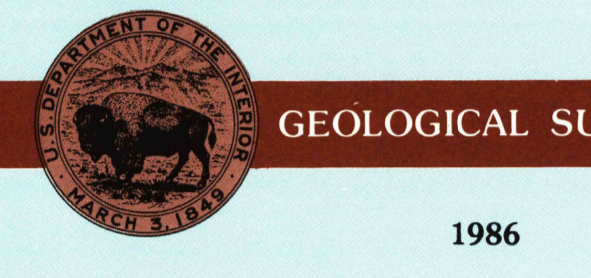




30 X 60 MINUTE QUADRANGLE SHOWING

- Elevations in meters
- Highways, roads and other manmade structures
- Water features
- Woodland areas
- Geographic names



Produced by the United States Geological Survey
 Compiled from USGS 1:24 000 and 1:62 500-scale topographic maps dated 1959-1983. Planimetry revised from aerial photographs taken 1983 and other source data.
 Revised information not field checked.
 Map edited 1986.
 Projection and 10 000-meter grid, zone 15
 Universal Transverse Mercator
 25 000-foot grid ticks based on Louisiana coordinate system, south and north zones. 1927 North American Datum
 To place on the predicted North American Datum 1983 move the projection lines 17 meters south and 14 meters east.
 There may be private inholdings within the boundaries of the National or State reservations shown on this map.

NATIONAL GEODETIC VERTICAL DATUM OF 1929 ELEVATIONS SHOWN TO THE NEAREST METER

THIS MAP COMPLIES WITH NATIONAL MAP ACCURACY STANDARDS

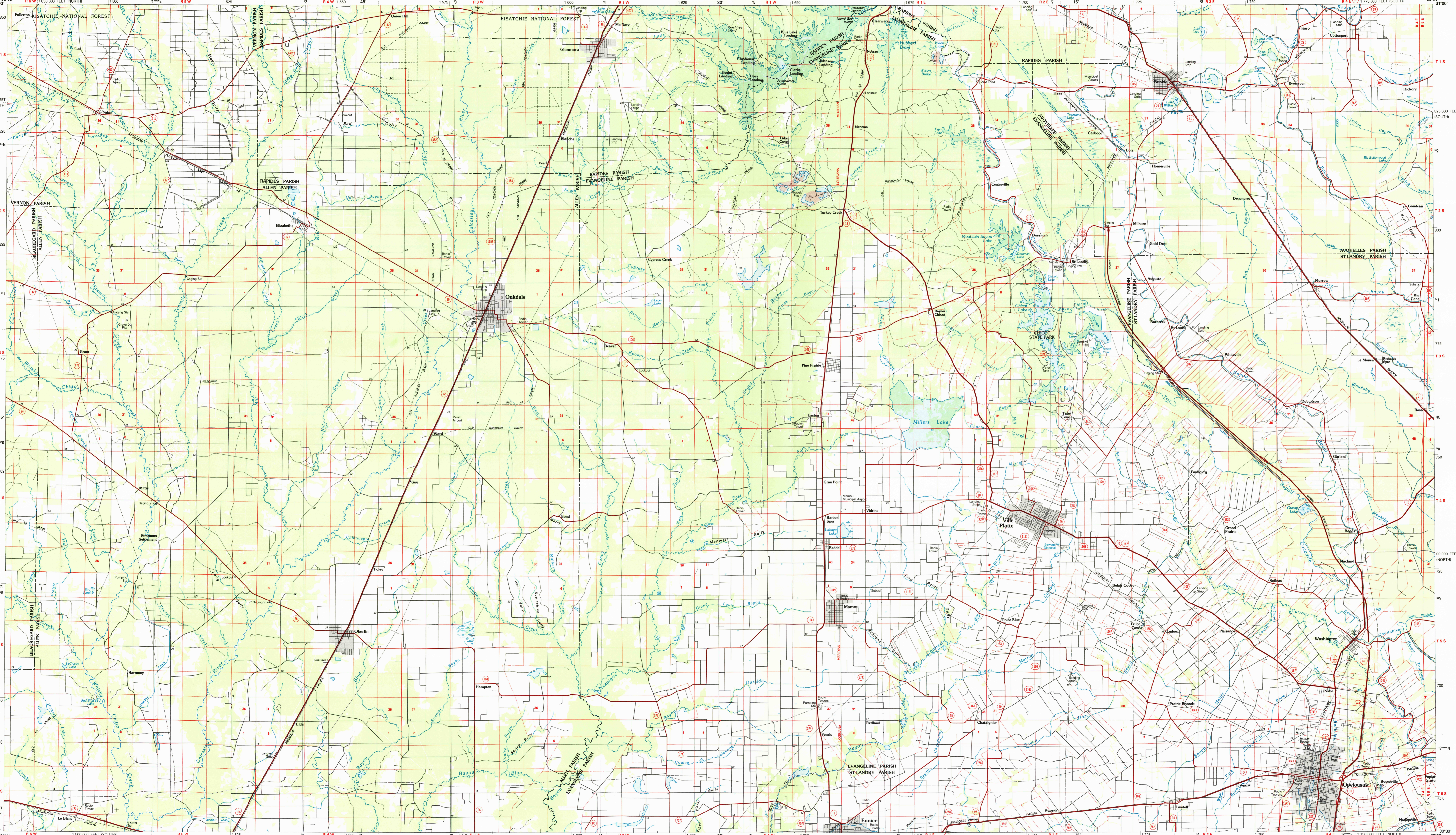
CONVERSION TABLE		DECLINATION DIAGRAM		ADJOINING MAPS	
Meters	Feet	Diagram		1	2
1	3.2808			4	5
2	6.5617			6	7
3	9.8425			8	8
4	13.1234			1. Levee	
5	16.4043			2. Woodville	
6	19.6852			3. Lake Charles	
7	22.9660			4. New Roads	
8	26.2469			5. Lake Charles	
9	29.5278			6. Baton Rouge	
10	32.8087				

To convert meters to feet multiply by 3.2808
 To convert feet to meters multiply by 0.3048
 UTM grid convergence (GV) and 1986 magnetic declination (MD) at center of map
 Diagram is approximate

FOR SALE BY U.S. GEOLOGICAL SURVEY, DENVER, COLORADO 80225 OR RESTON, VIRGINIA 22092

Topographic Map Symbols

- Primary highway, hard surface
- Secondary highway, hard surface
- Light duty road, principal street, hard or improved surface
- Other road or street, trail
- Route marker: Interstate, U.S., State
- Railroad: standard gauge, narrow gauge
- Bridge, viaduct, culverpass
- Tunnel: road, railroad
- Built up area: locality, elevation
- Airport: landing field, landing strip
- National boundary
- State boundary
- County boundary
- National or State reservation boundary
- Land grant boundary
- U.S. public lands survey: range, township, section
- Range, township, section line, uncontracted
- Power transmission line, pipeline
- Dam; dam with lock
- Cemetery: building
- Windmill; water well; spring
- Mine shaft; pit or cave; mine, quarry; gravel pit
- Contour: index, intermediate, supplementary
- Bathymetric contour: index, intermediate
- Stream, lake: perennial, intermittent
- Rapids, large and small; falls, large and small
- Area to be submerged; marsh, swamp
- Land subject to controlled inundation; woodland
- Slope: meadow
- Outcrop; viewpoint



SCALE 1:100 000

1 CENTIMETER ON THE MAP REPRESENTS 1 KILOMETER ON THE GROUND

0 1 2 3 4 5 6 7 8 9 10 11 12 13 14 15 16 17 18 19 20 KILOMETERS

0 1000 2000 3000 4000 5000 6000 7000 METERS

0 1 2 3 4 5 6 7 8 9 10 11 12 13 14 15 16 17 18 19 20 MILES

0 1000 2000 3000 4000 5000 6000 7000 FEET